



Zoology students

Comparative anatomy

Practical part

First term

By

1- Dr: Salwa Mansour mohamed

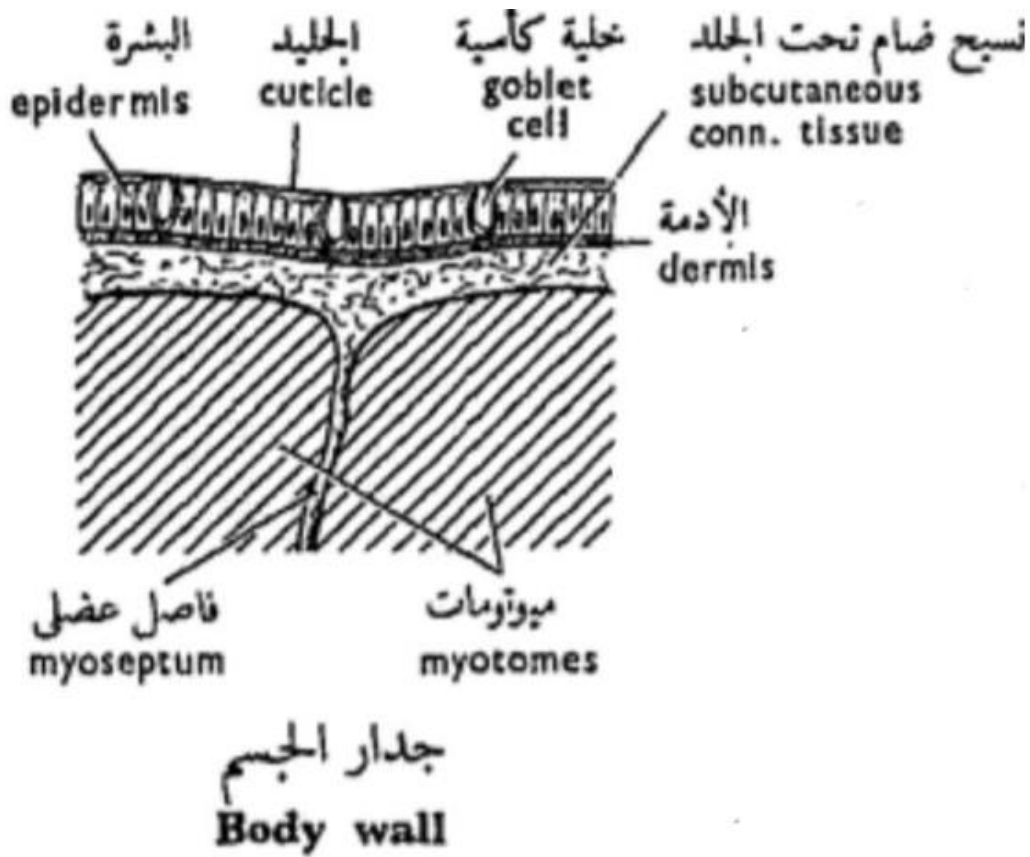
(PHD of Zoology)

Faculty of Science

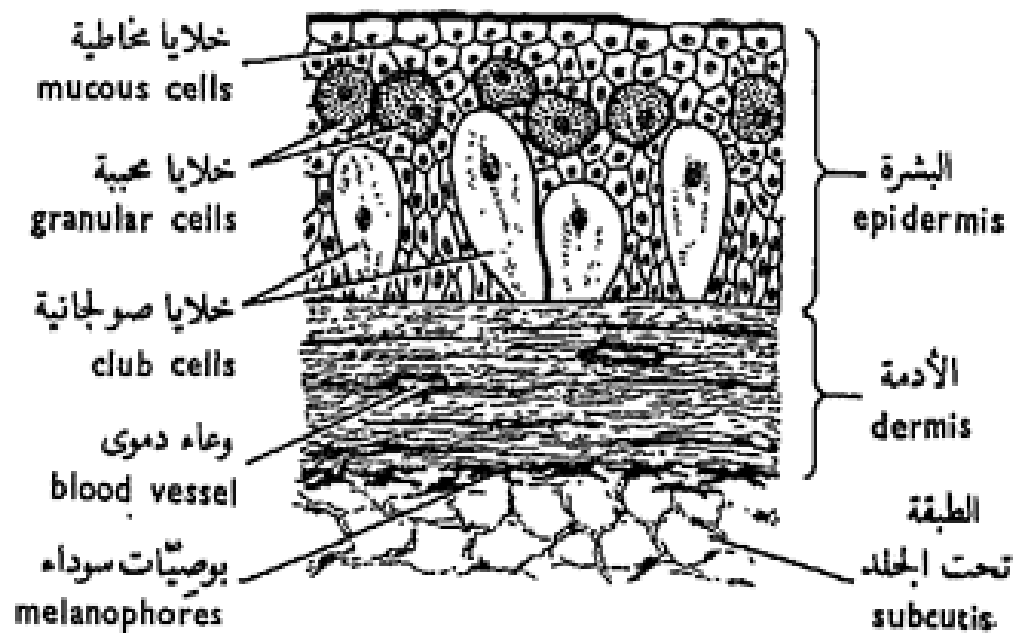
Zoology department

2022-2023

The Book data

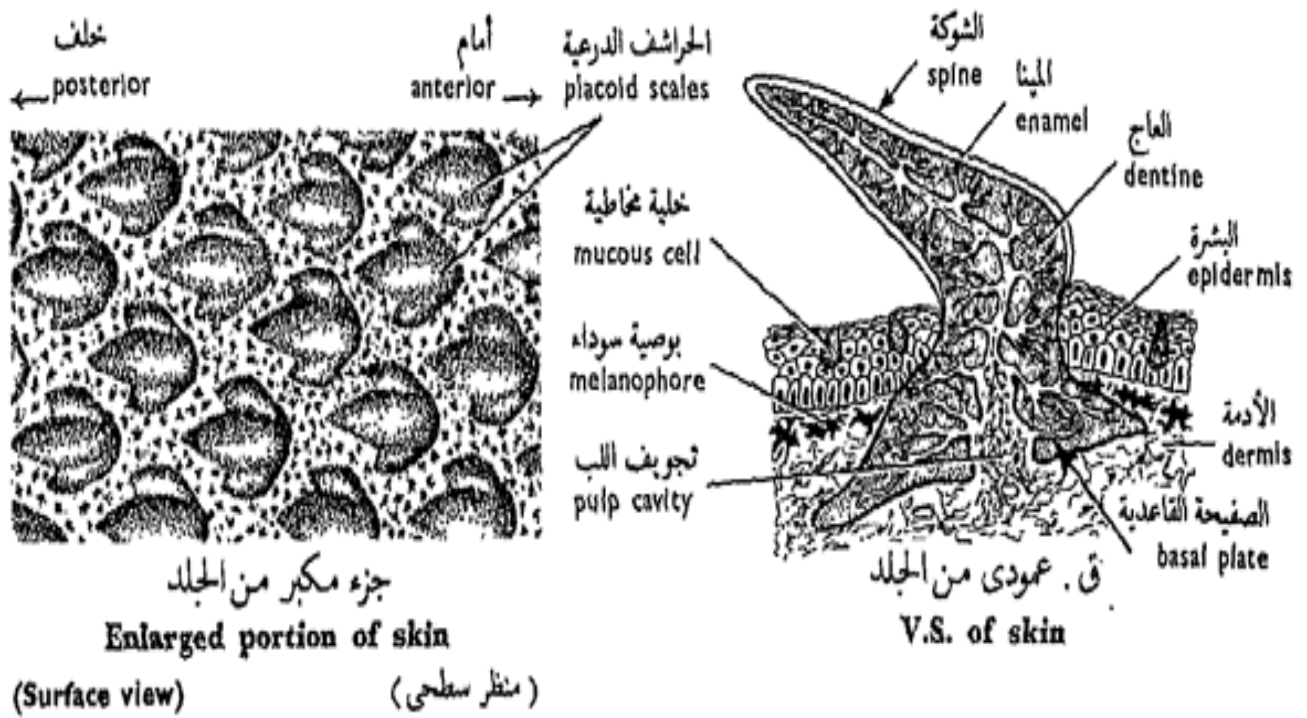


v.s in the of protochordata (*Amphioxus lanceolatus*)

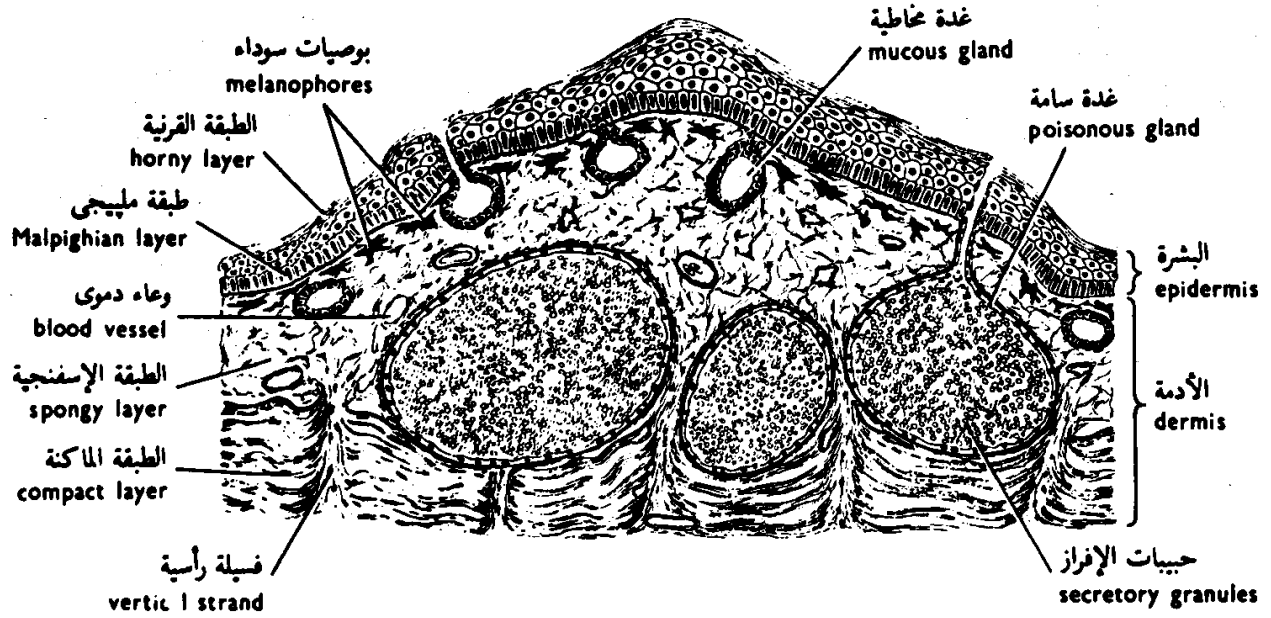


قى . عمودى من الجلد
 V.S. of skin

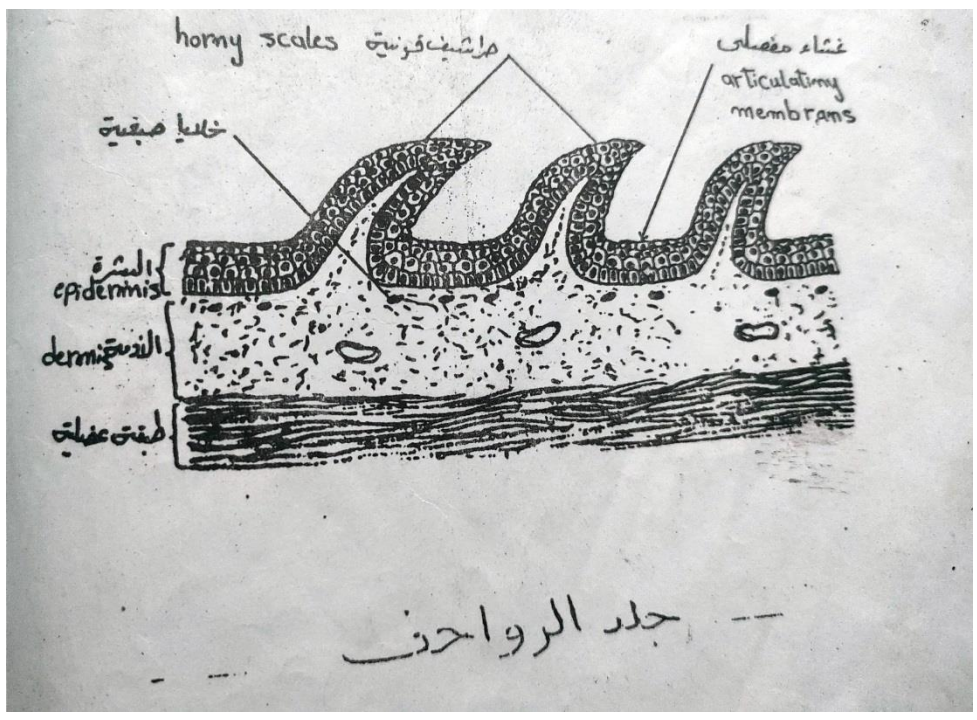
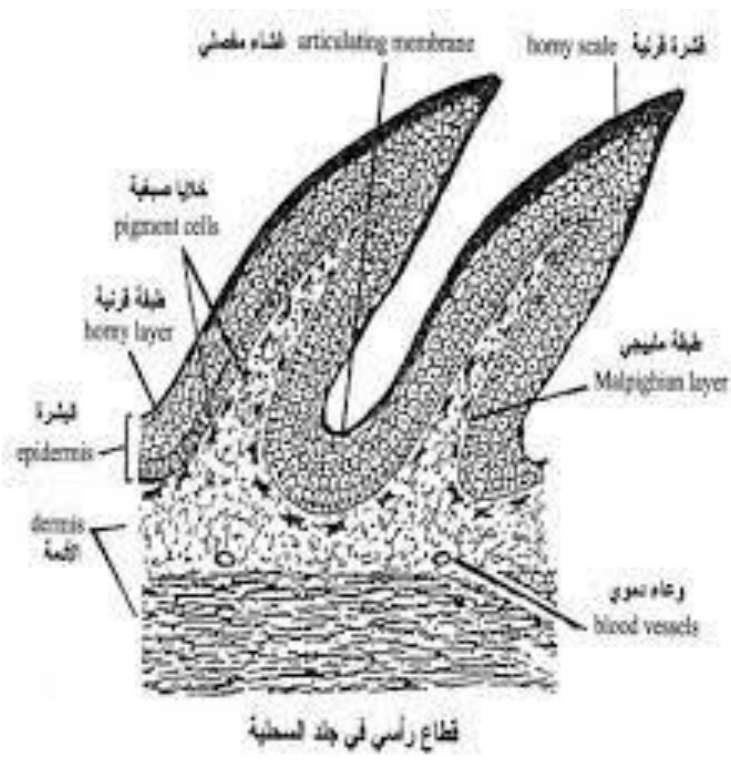
v.s in the skin of cyclostomata (*Petromyzon sp.*)



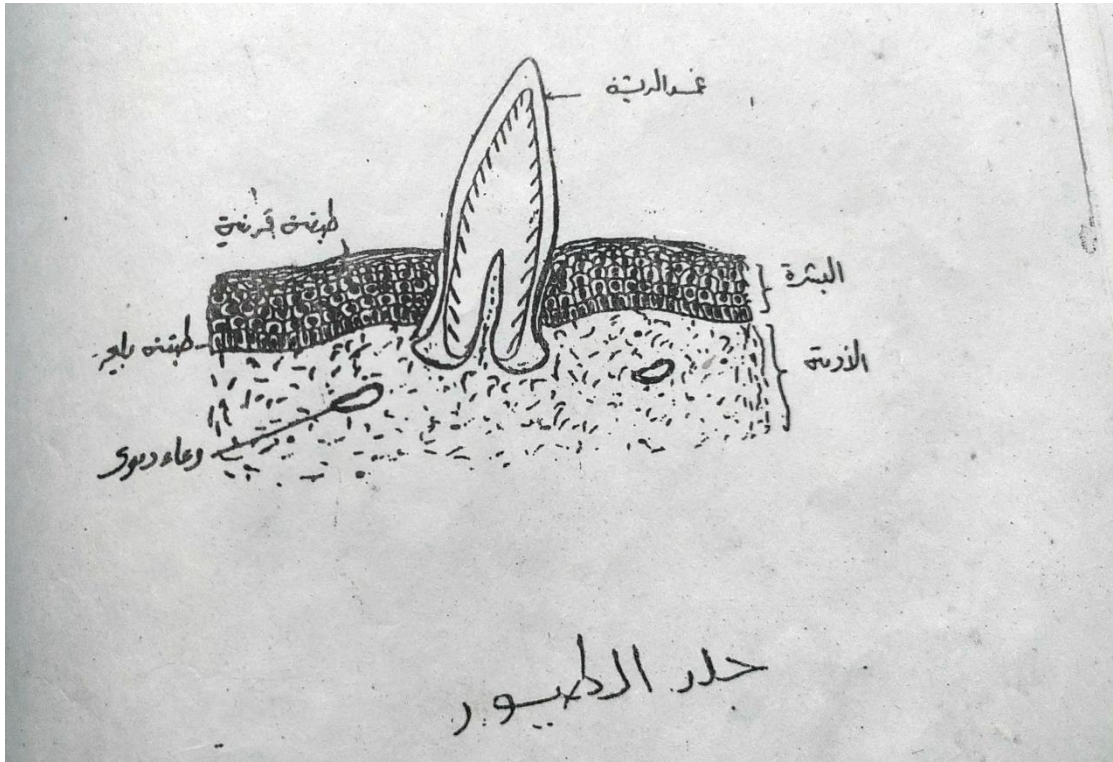
v.s in the skin of dog fish



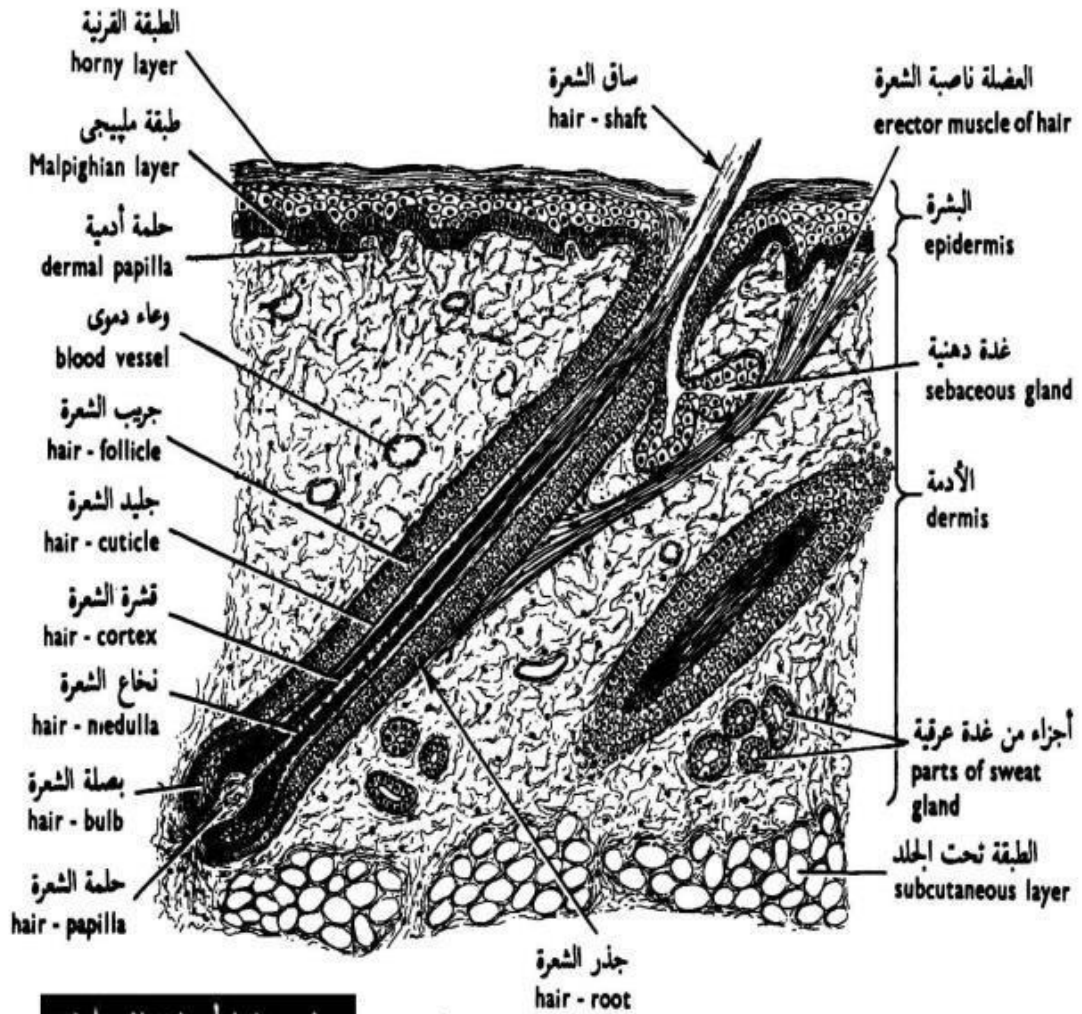
شكل ٥٤ - قطاع رأسي من جلد الضفدعة
 FIG. 45 - V.S. OF THE SKIN OF THE TOAD



v.s in the skin of Reptilia

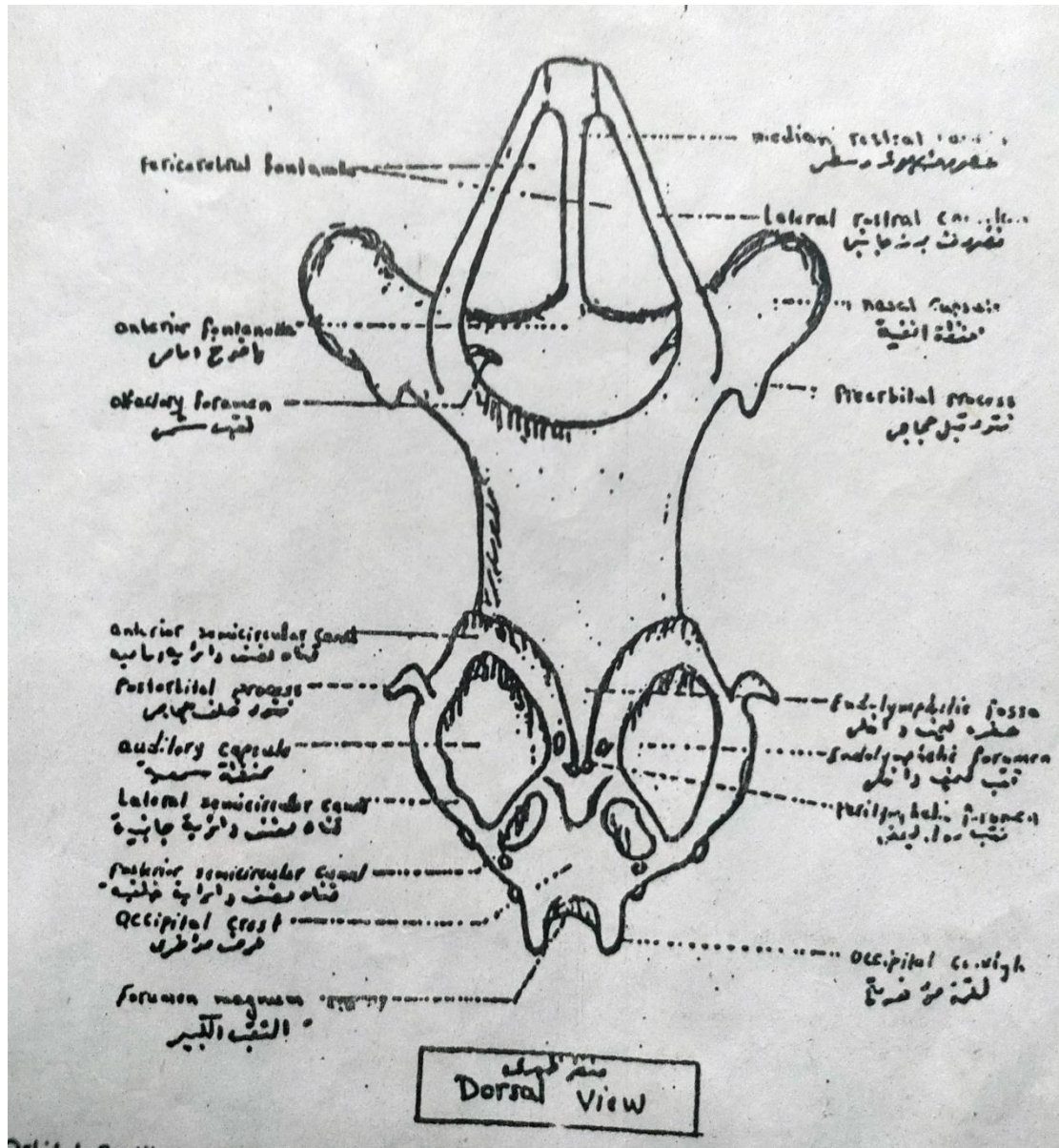


v.s in the skin of Aves

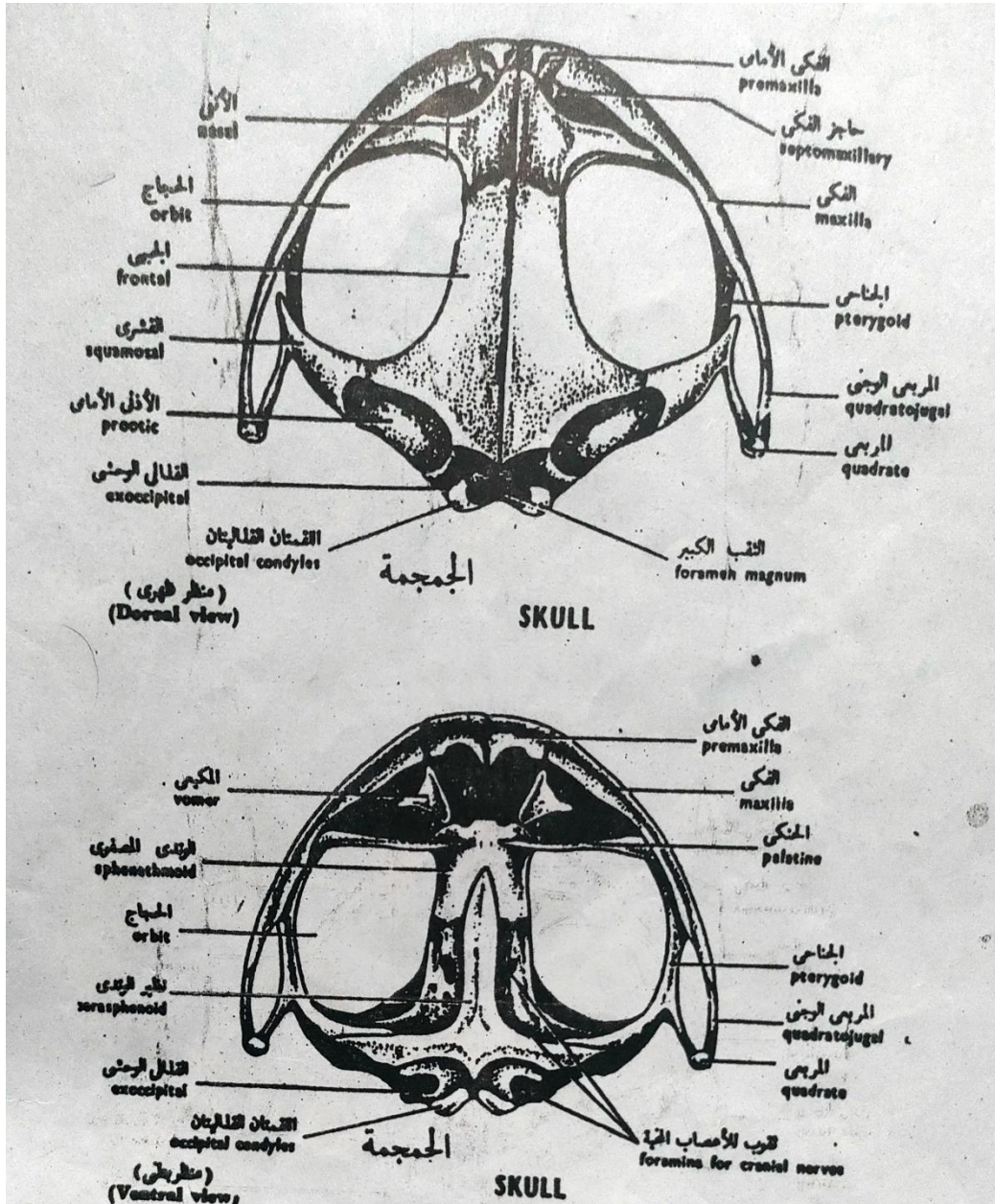


بيولوجية الحيوان العملية
 قطاع رأسي من جلد الخنزير

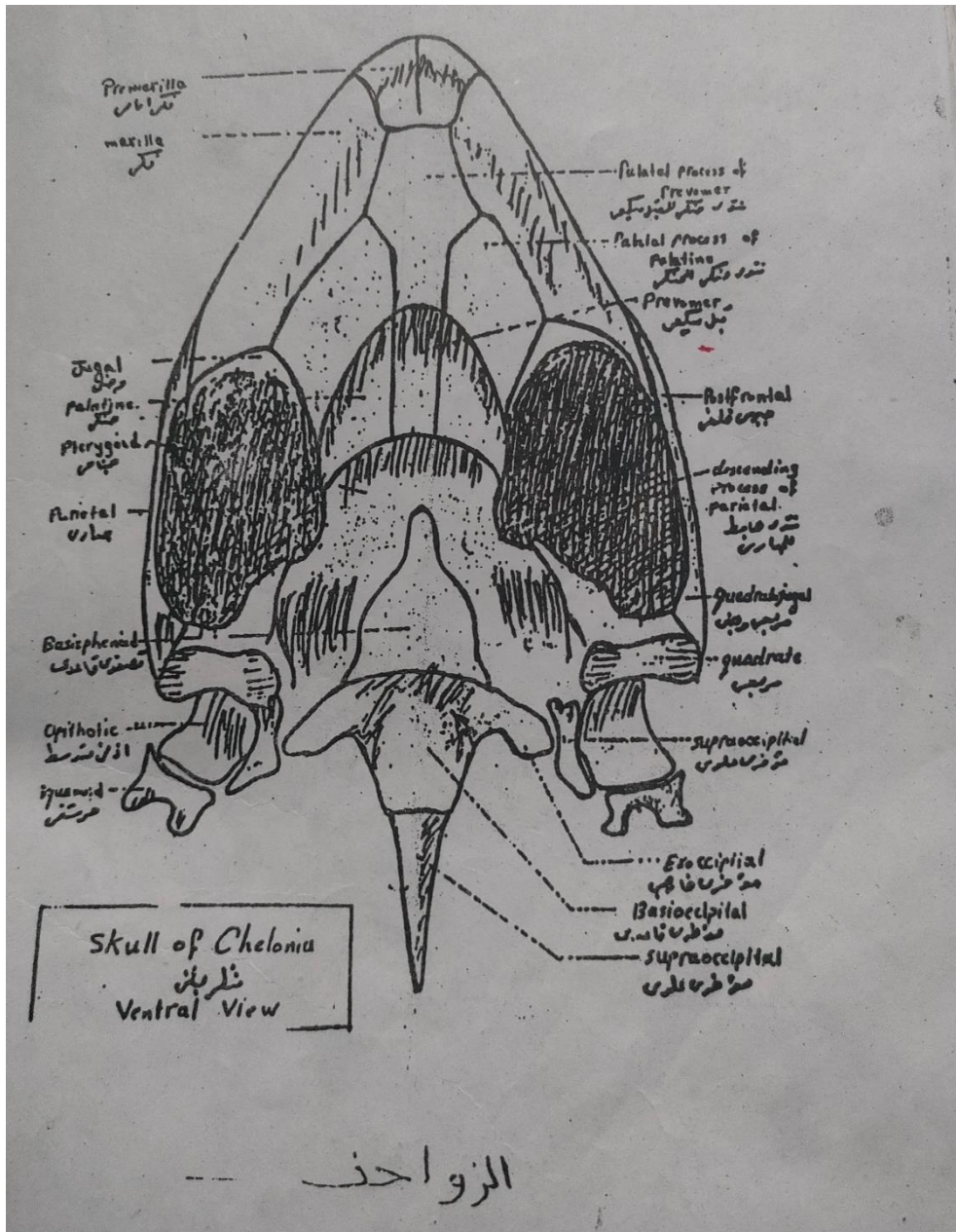
v.s in the skin of Mammalia



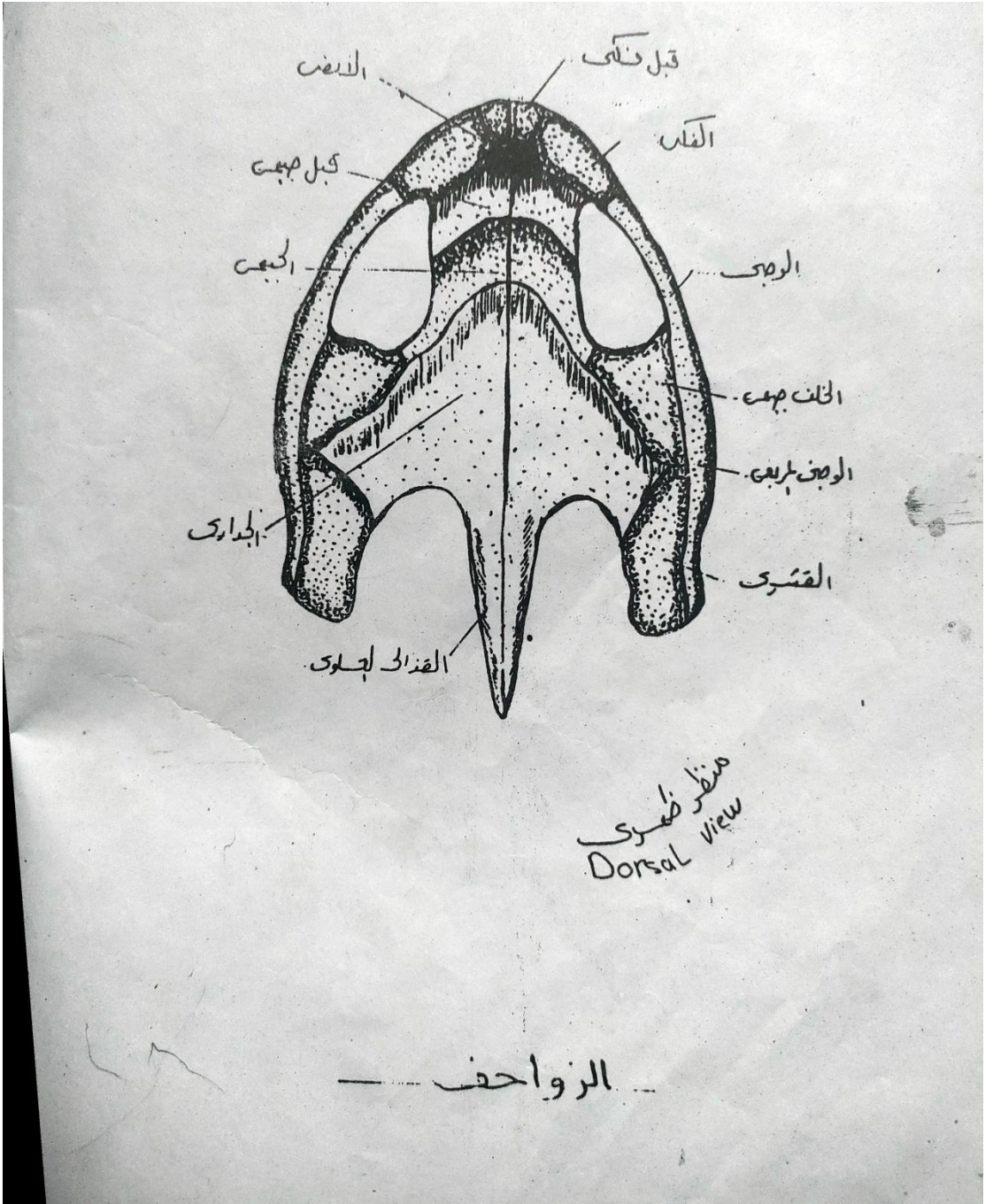
Dorsal view of dog fish skull



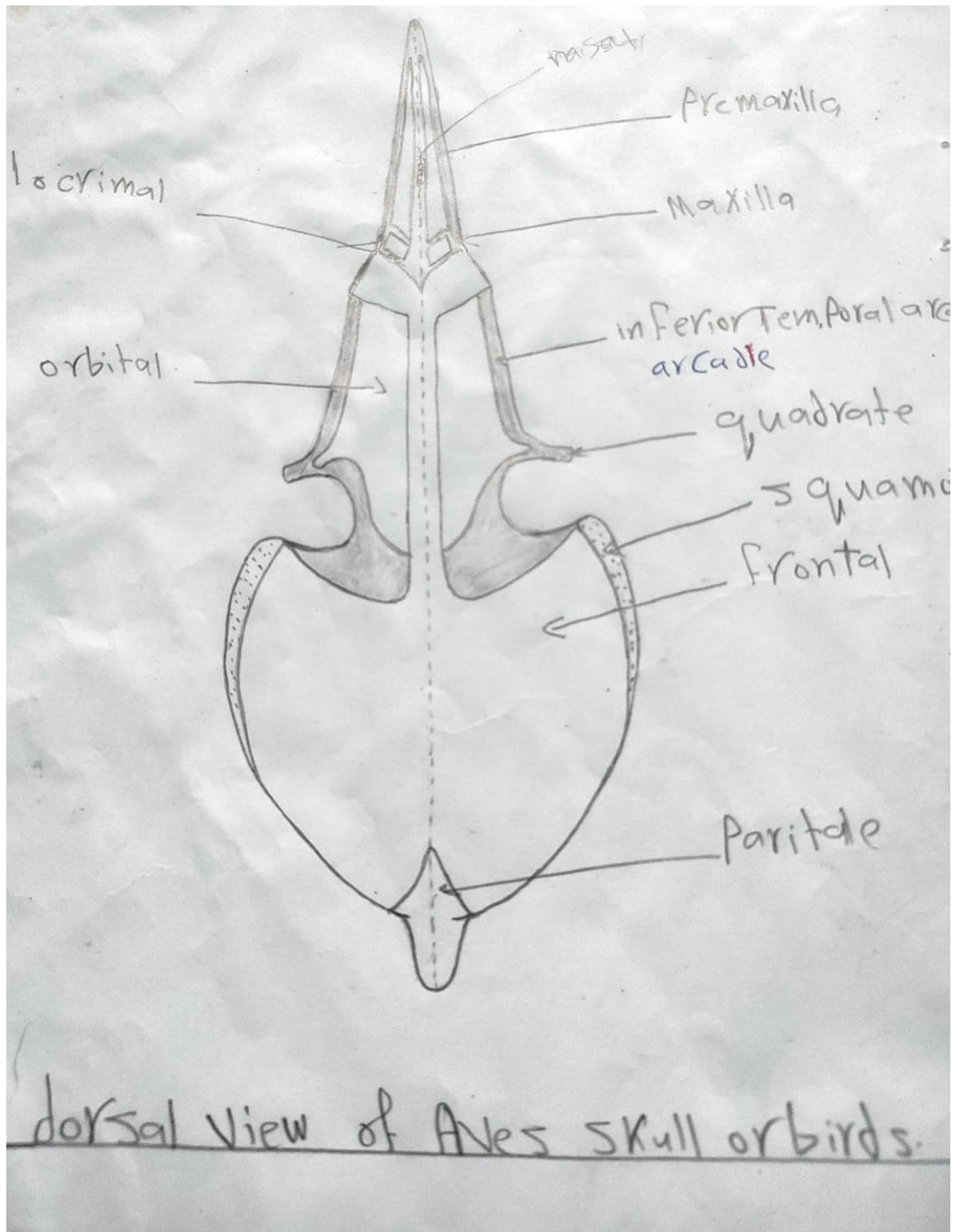
The skull of Toad



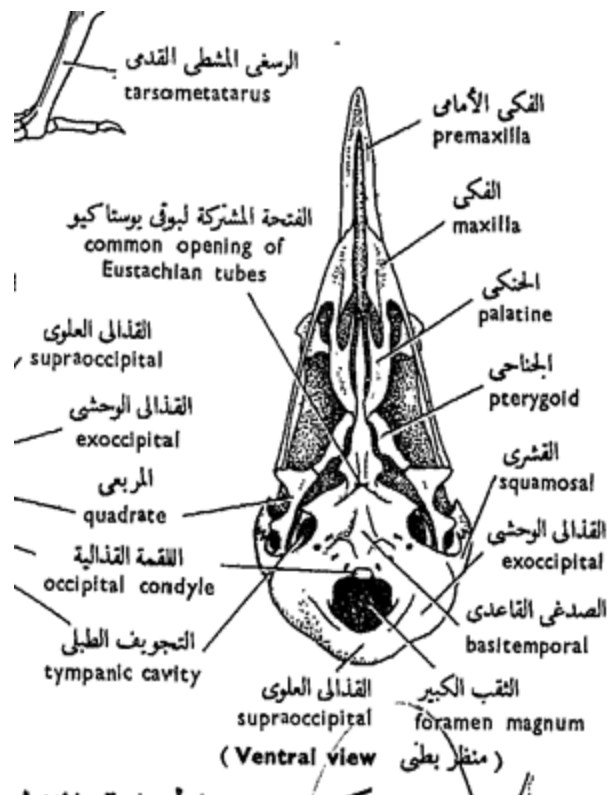
Ventral view of Chelonia skull



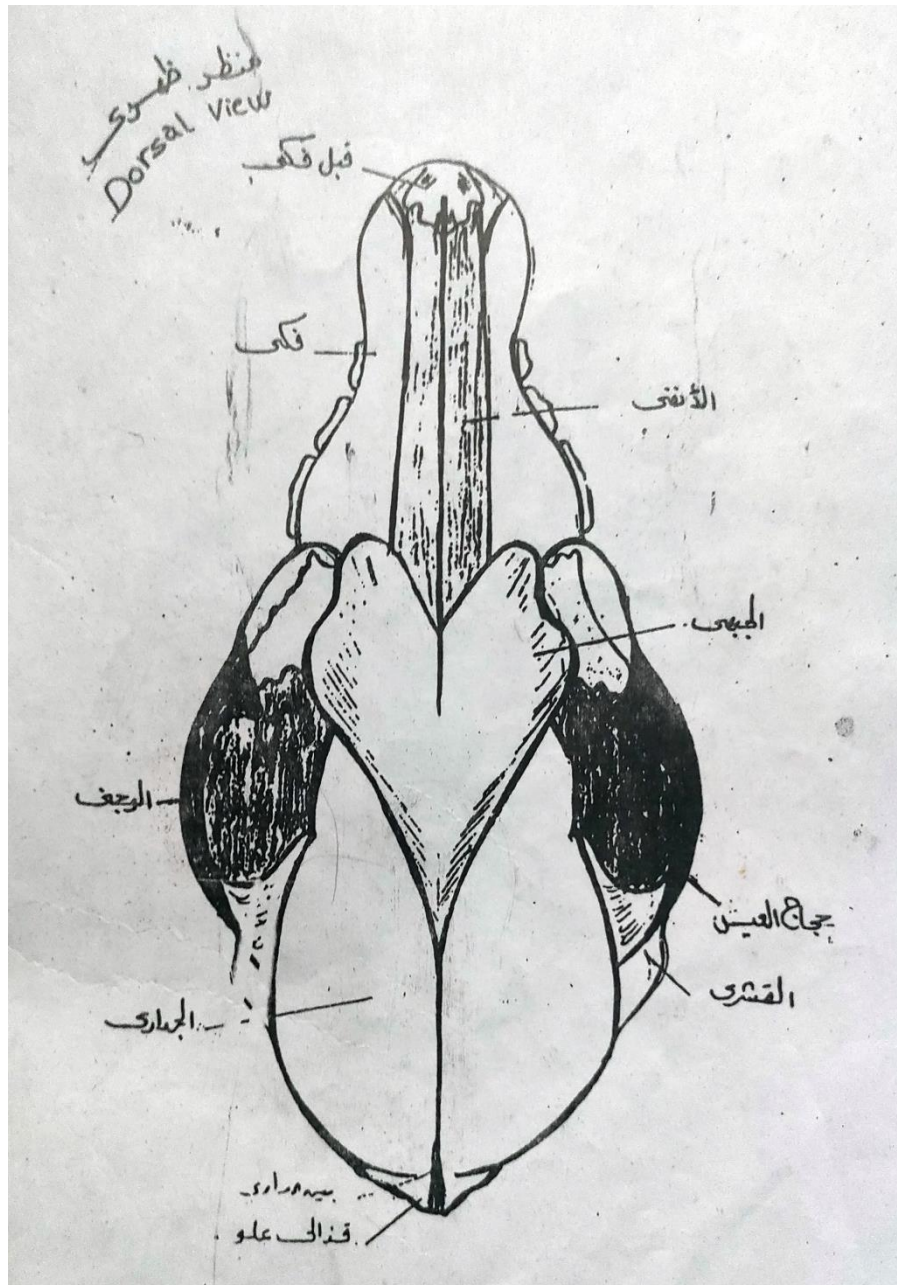
Dorsal view of Chelonia skull



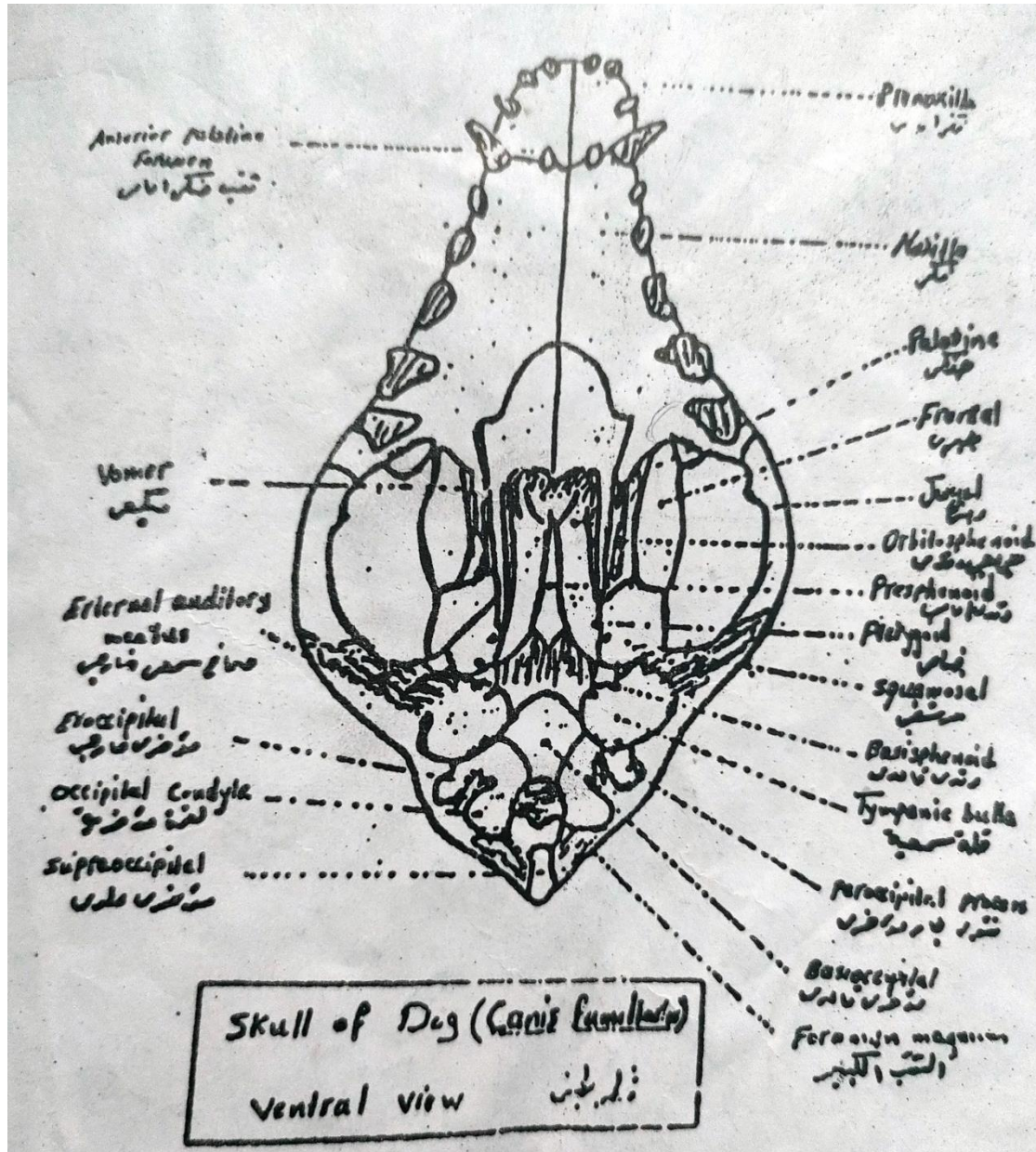
Dorsal view of Aves skull



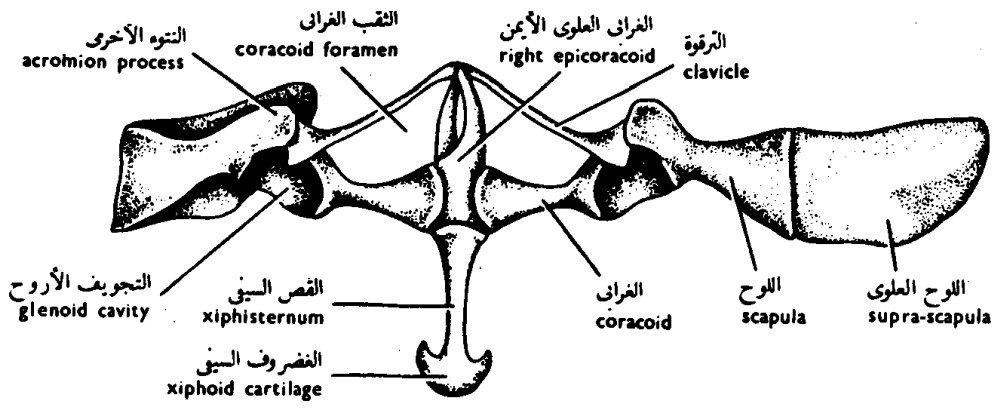
Ventral view of Aves skull



Dorsal view of Dog skull (Mammalia)

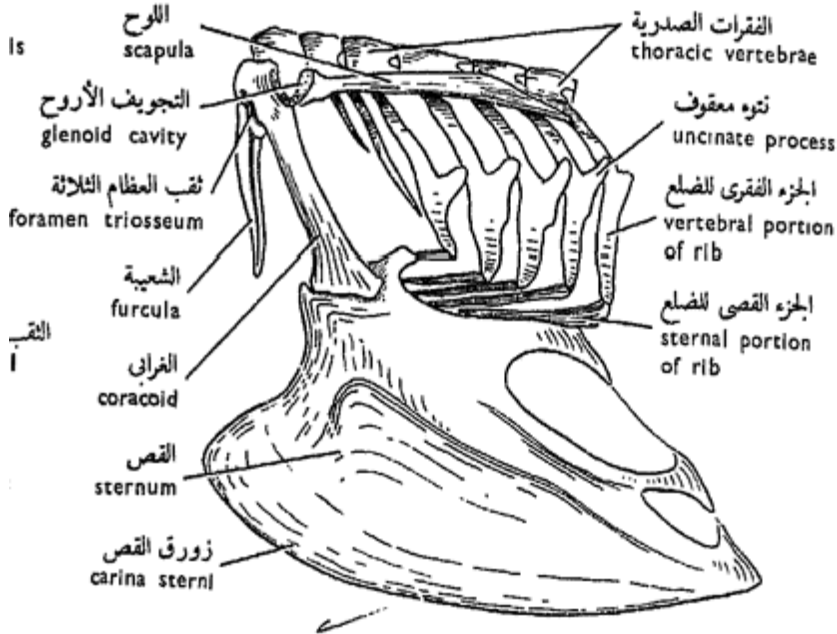


Ventral view of Dog skull (Mammalia)



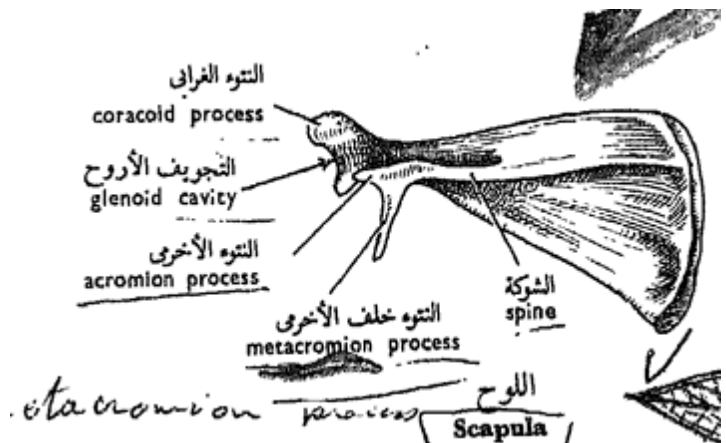
شكل ٣٣ - الحزام الصدري والقص
 FIG. 33 - PECTORAL GIRDLE AND STERNUM

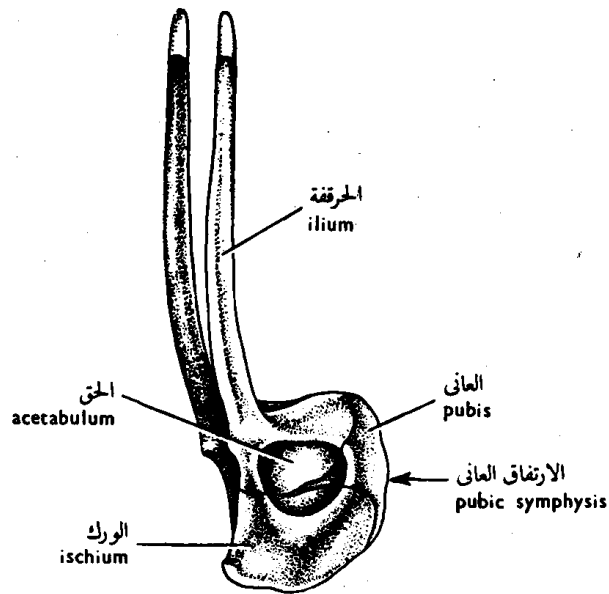
Toad



Skeleton of thorax in Aves

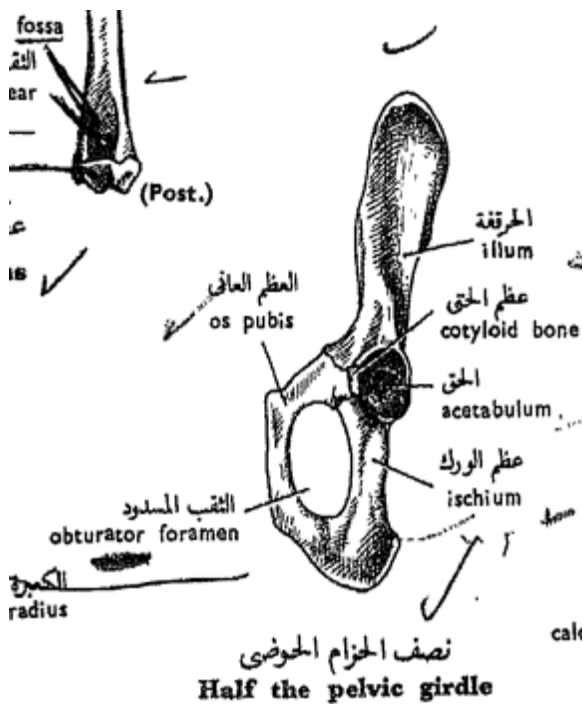
Scapula in Mammalia





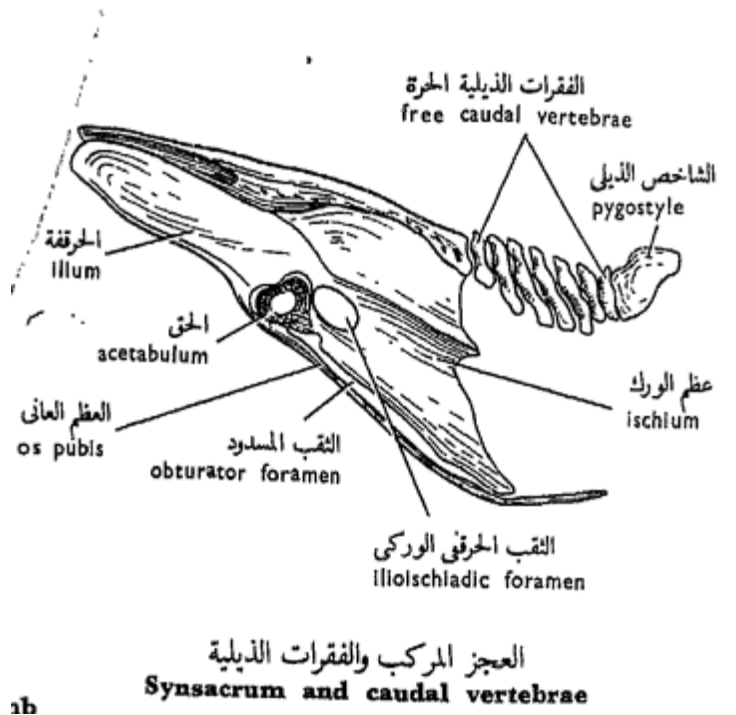
شكل ٣٥ - الحزام الحوضي
FIG. 35 - PELVIC GIRDLE

Toad



نصف الحزام الحوضي
Half the pelvic girdle

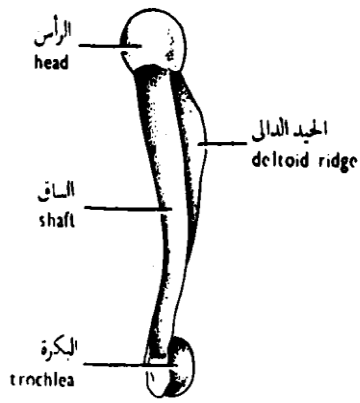
ن القدم العدة



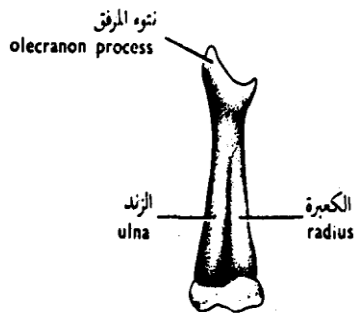
العجز المركب والفقرات الذيلية
Synsacrum and caudal vertebrae

Aves

Mammalia

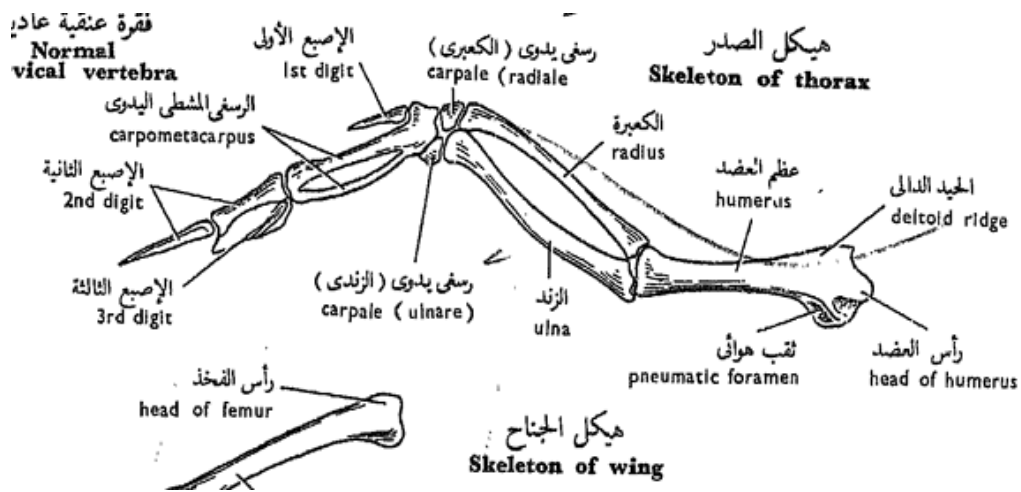


عظم العضد
HUMERUS



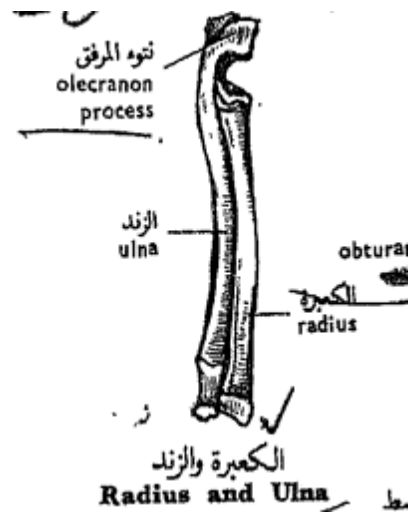
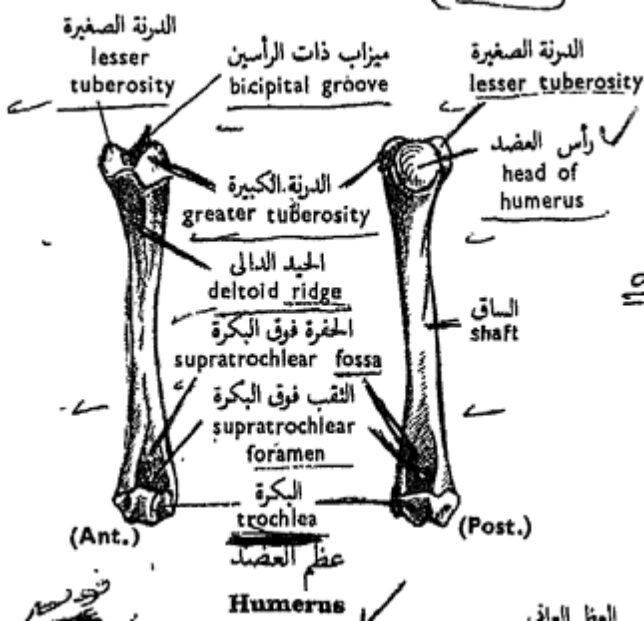
الكعبرى الزندى
RADIO-ULNA

شكل ٣٤ - عظام الطرف الأمامى
FIG. 34 - BONES OF FORE-LIMB

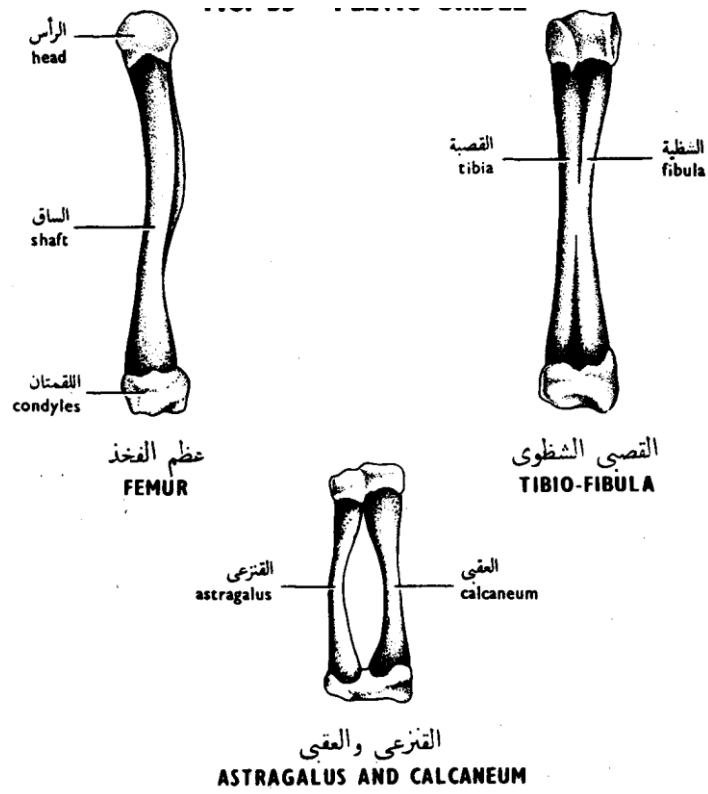


هيكل الصدر
Skeleton of thorax

هيكل الجناح
Skeleton of wing



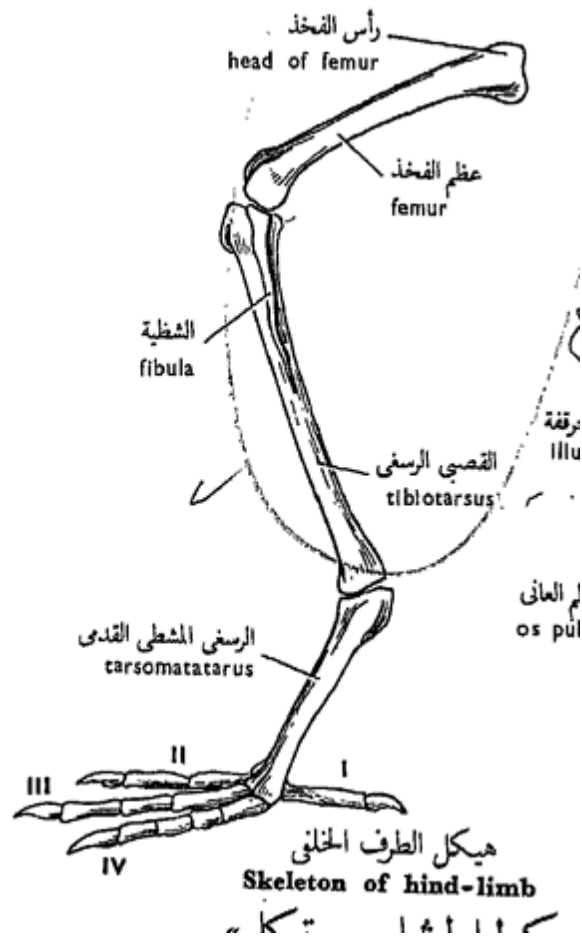
الكعبرة والزند
Radius and Ulna



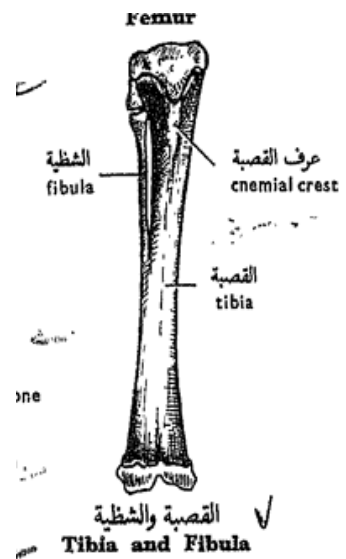
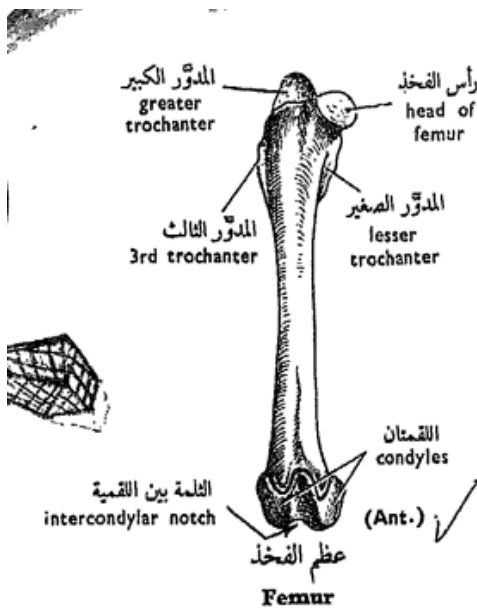
شكل ٣٦ - عظام الطرف الخلفى
FIG. 36 - BONES OF HIND-LIMB

Toad

Aves



Bones of hind -limb in mammalia



References

- كتاب بيولوجيا الحيوان العملية
- مذكرة تشريح تجمع رسومات الدروس العملية مجهزة من قبل قسم علم الحيوان