



**Zoology students**

**Comparative anatomy**

**Practical part**

**First term**

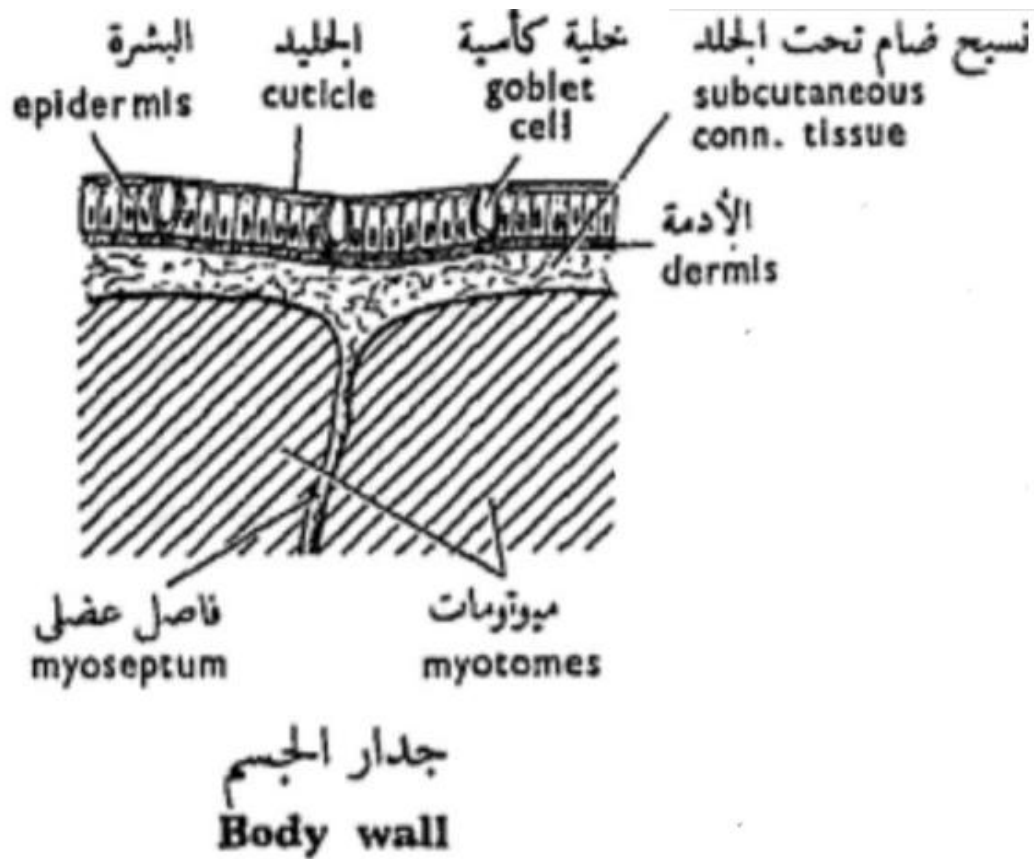
**By**

**1- Dr: Nermean Moamen Hussein**  
**(Assistant Professor of Zoology)**

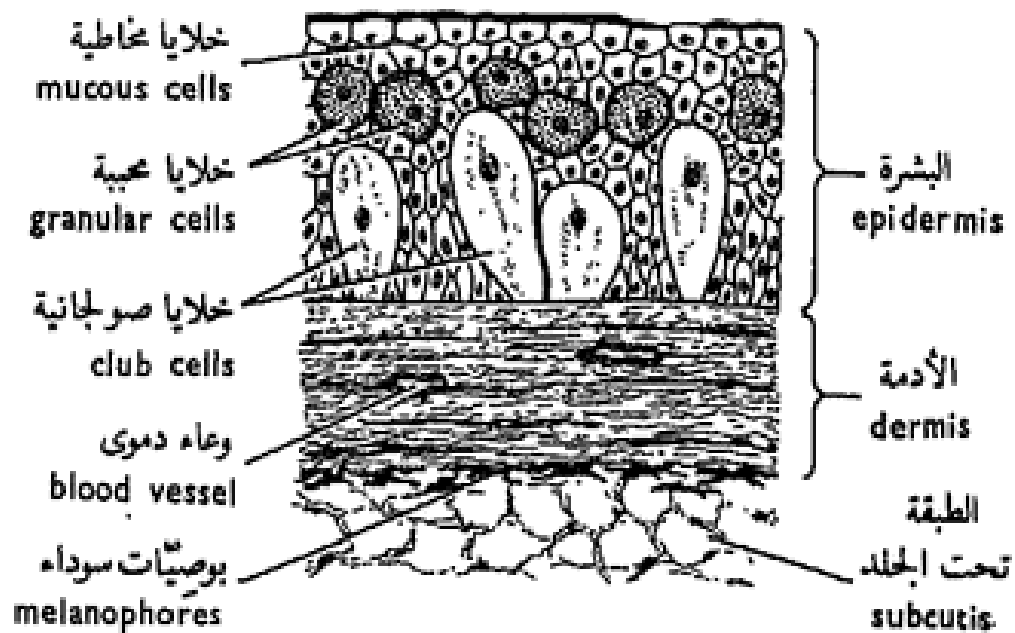
**Faculty of Science**  
**Zoology department**  
**2022-2023**

# The Book data

---

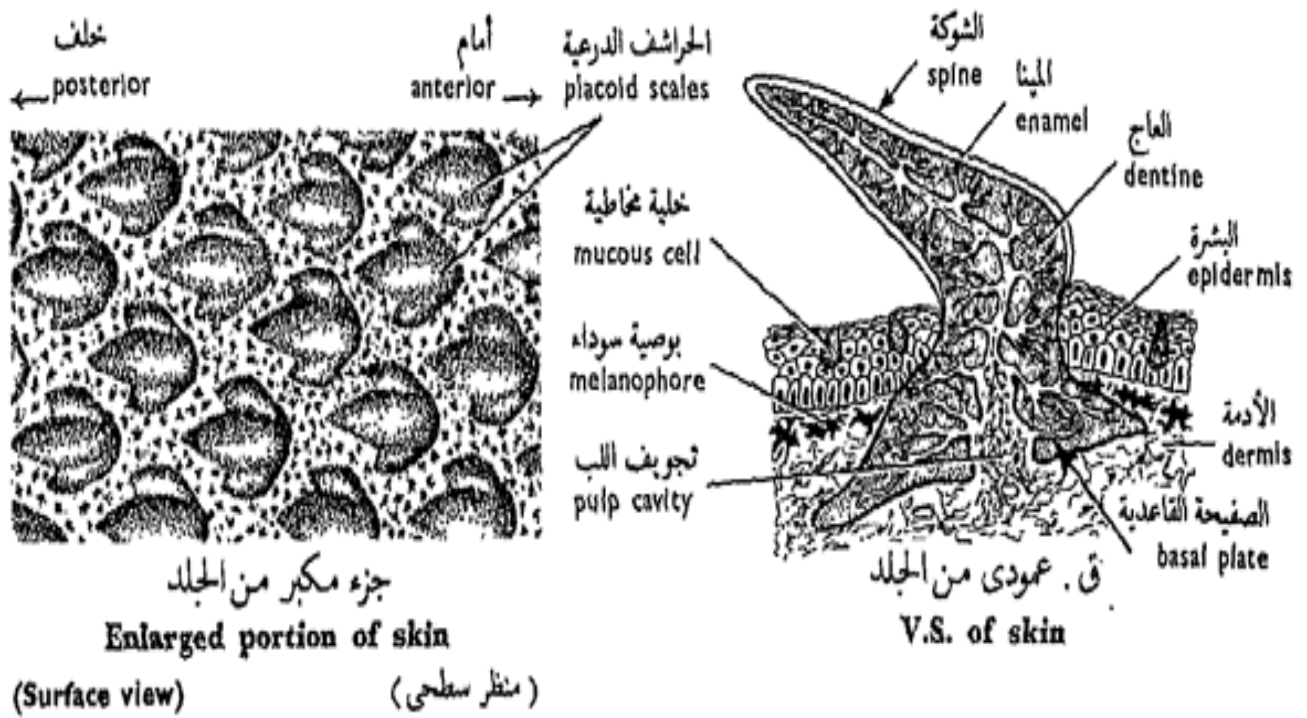


v.s in the of protochordata (*Amphioxus lanceolatus*)

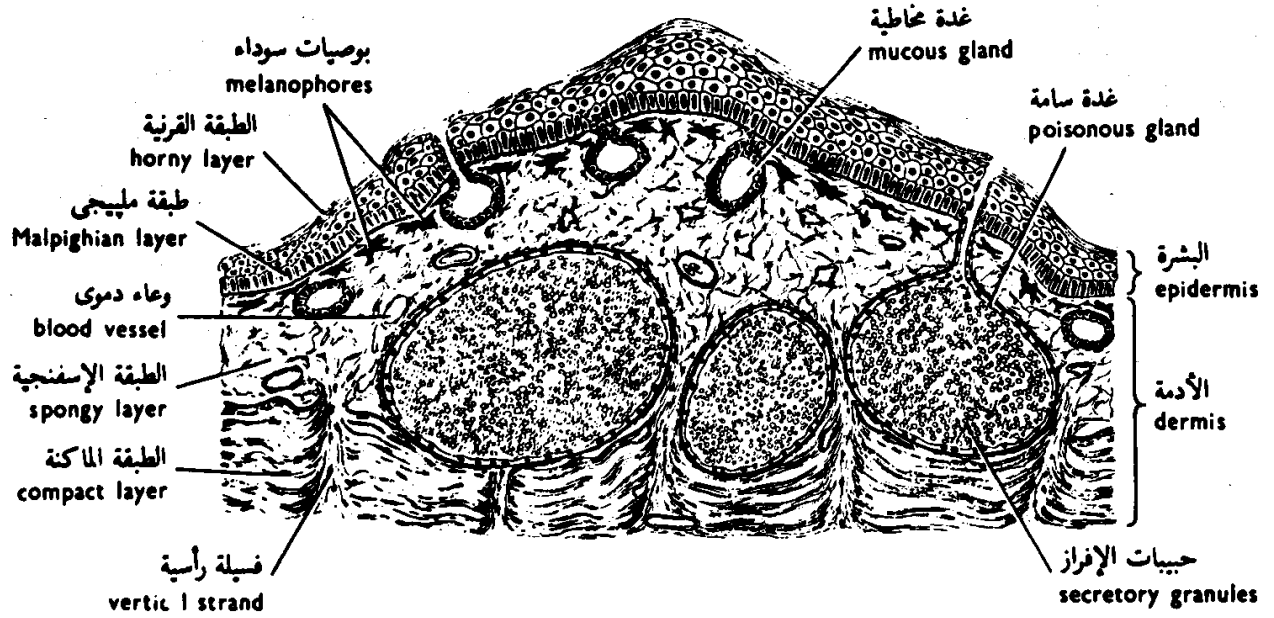


قى . عمودي من الجلد  
 V.S. of skin

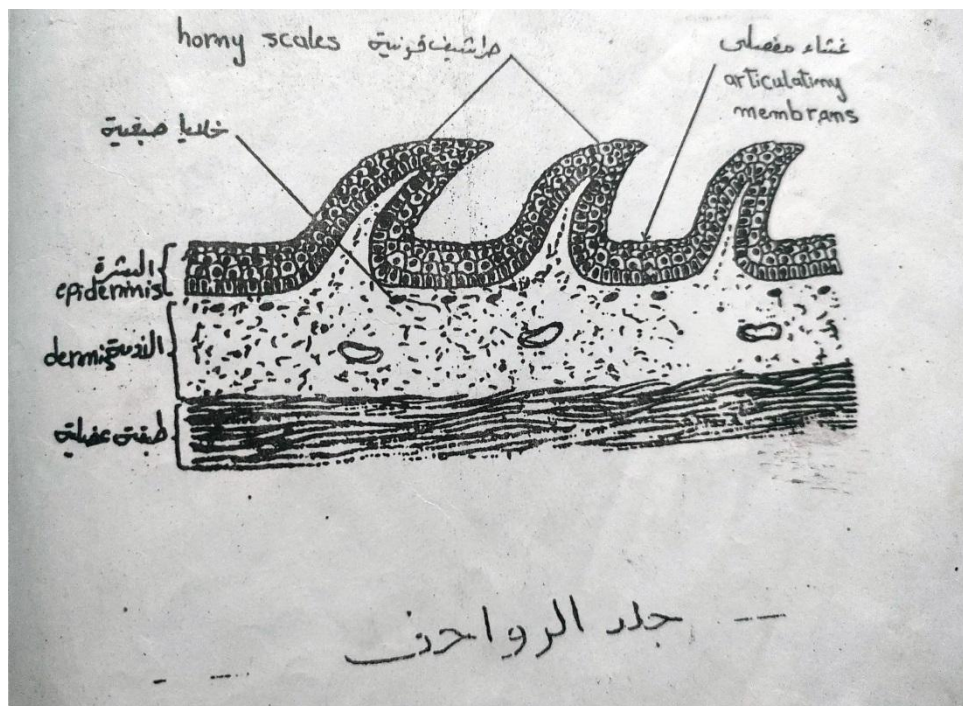
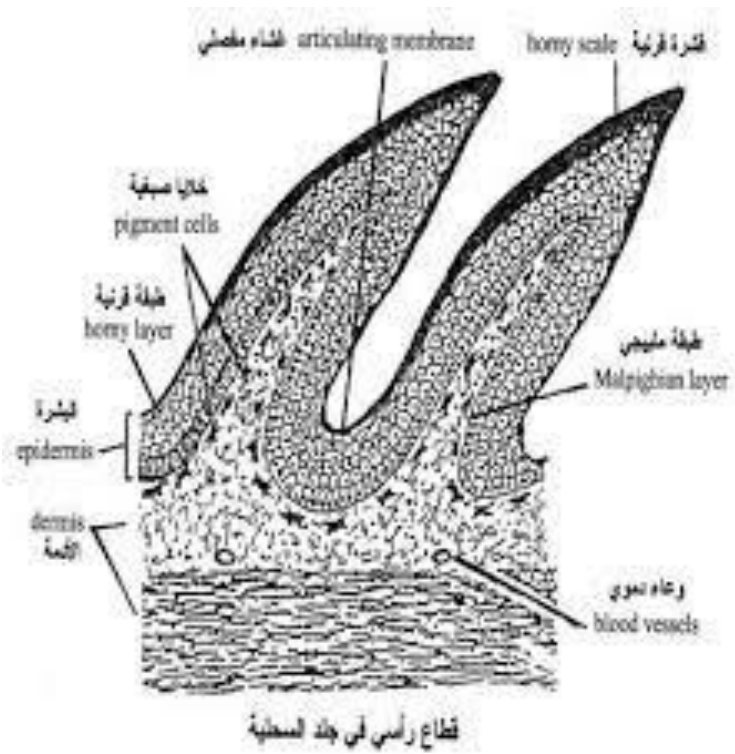
v.s in the skin of cyclostomata (*Petromyzon sp.*)



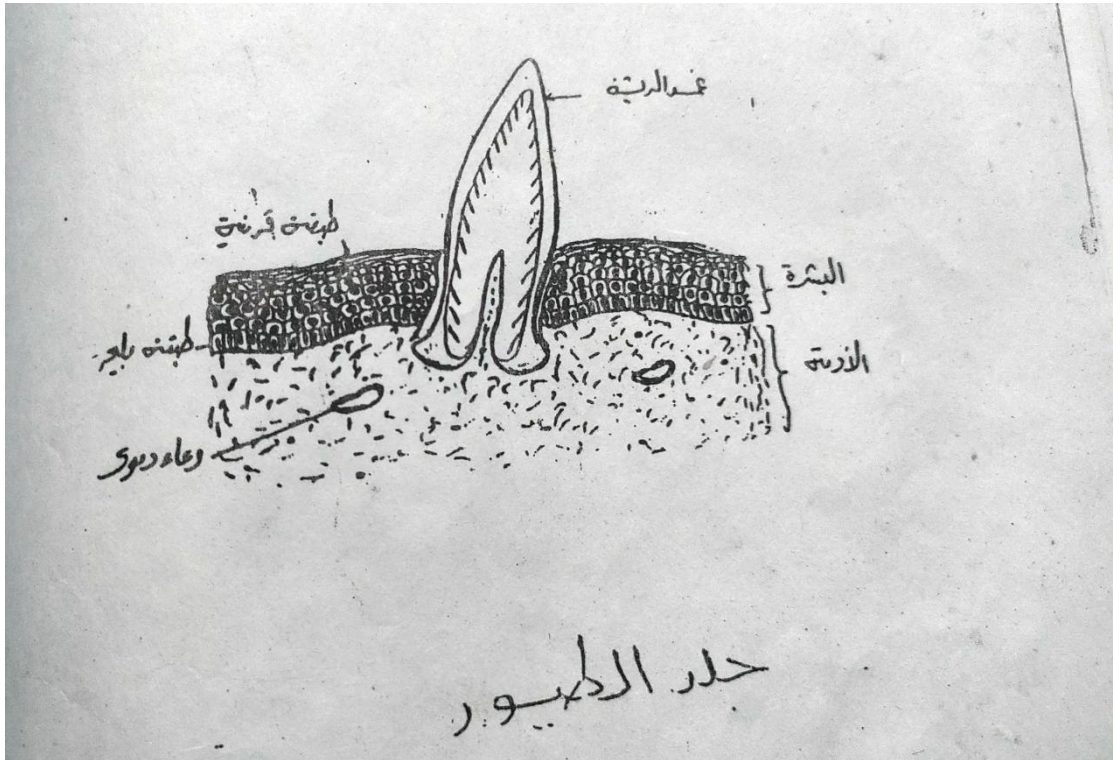
v.s in the skin of dog fish



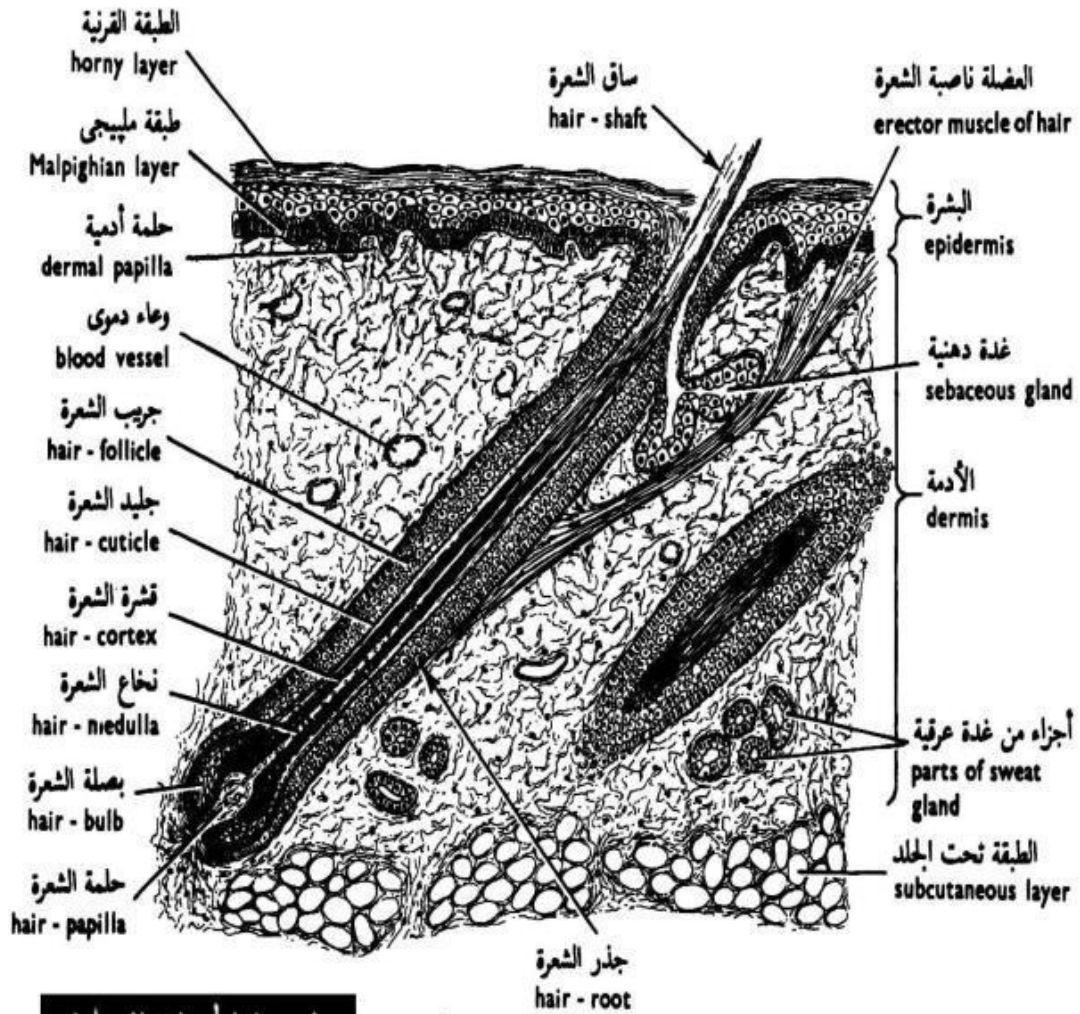
شكل ٥٠ - قطاع رأسي من جلد الضفدعة  
 FIG. 45 - V.S. OF THE SKIN OF THE TOAD



**v.s in the skin of Reptilia**



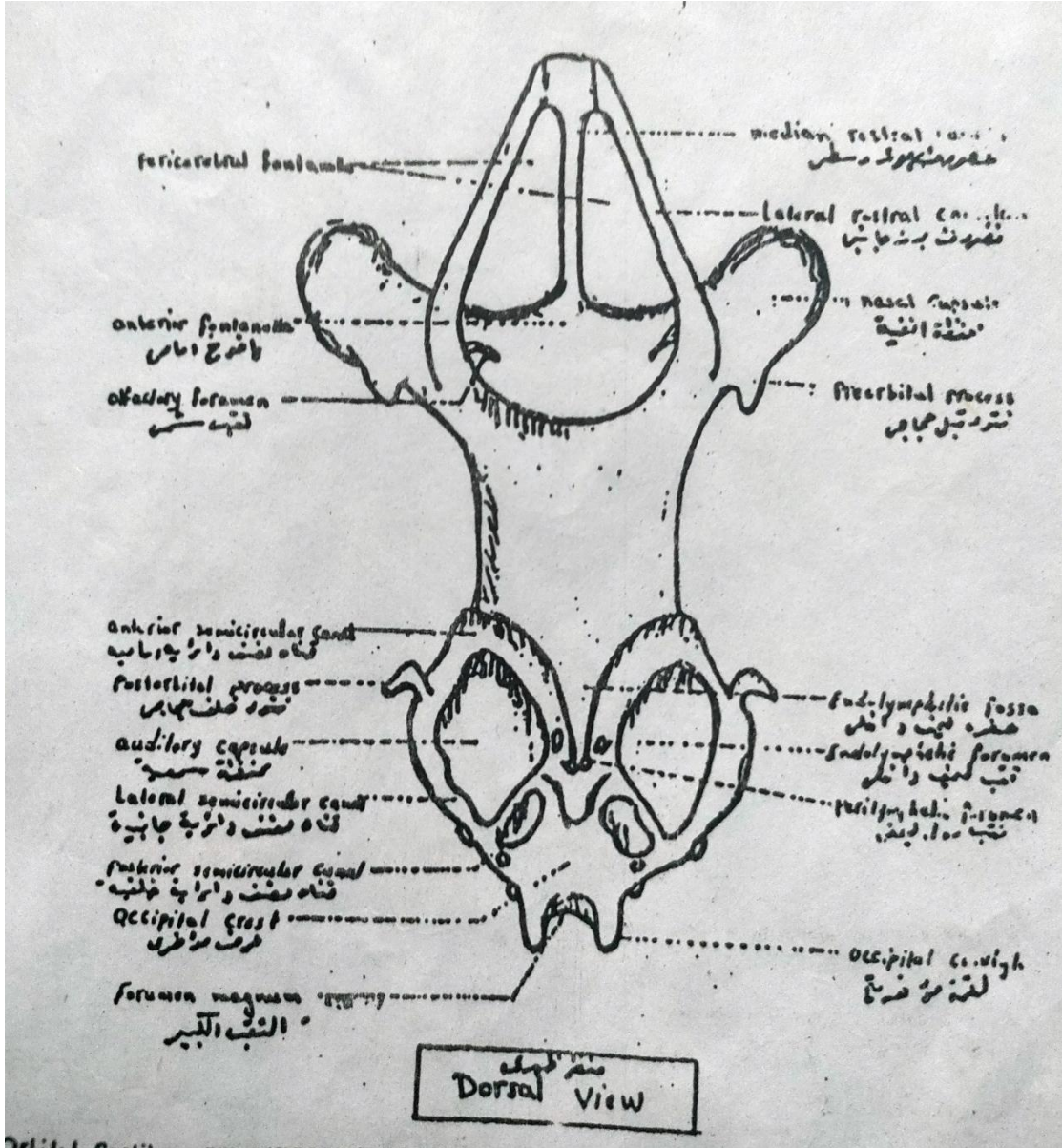
**v.s in the skin of Aves**



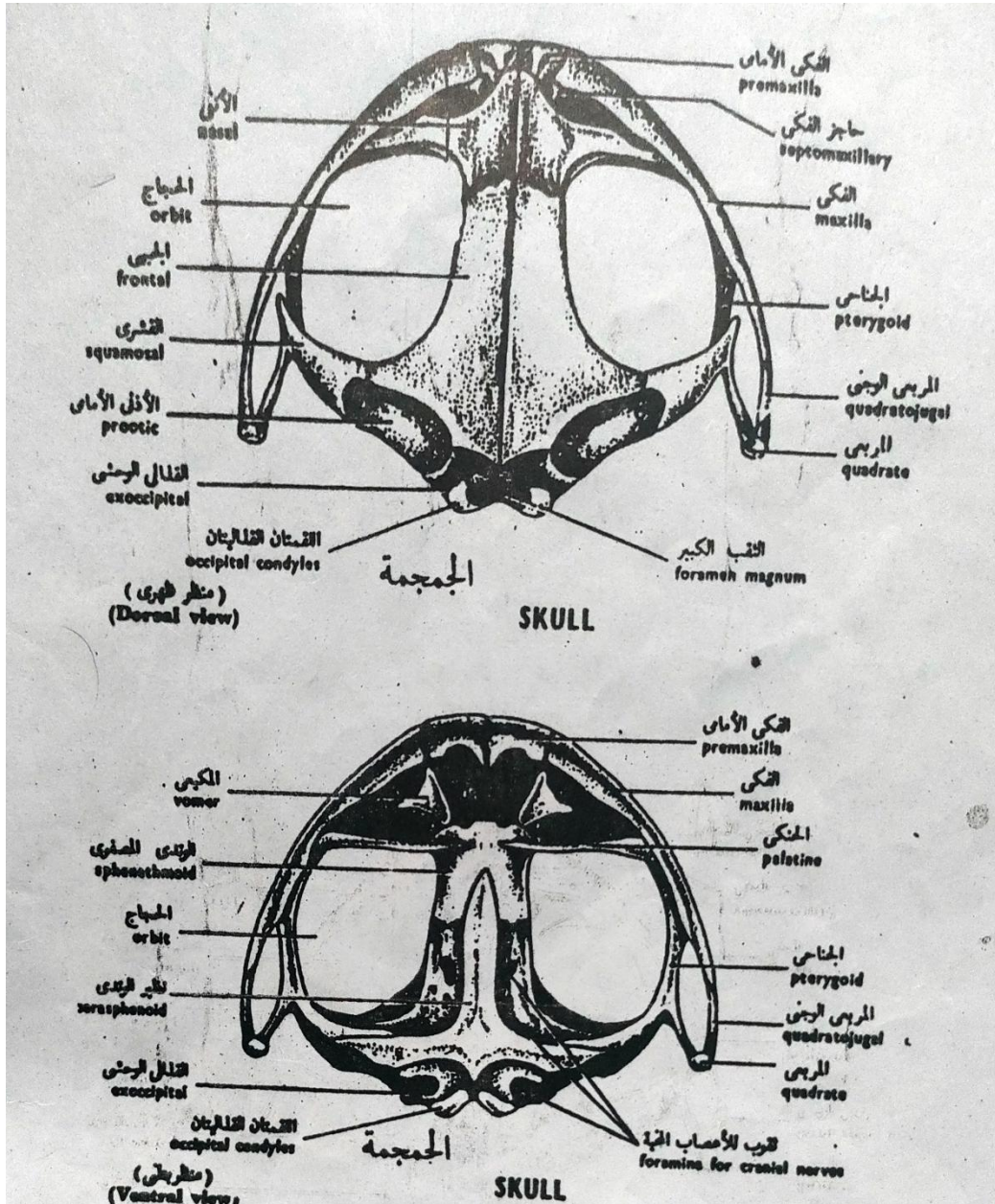
بيولوجية الحيوان العملية  
 قطاع رأسى من جلد الخنزير

v.s in the skin of Mammalia



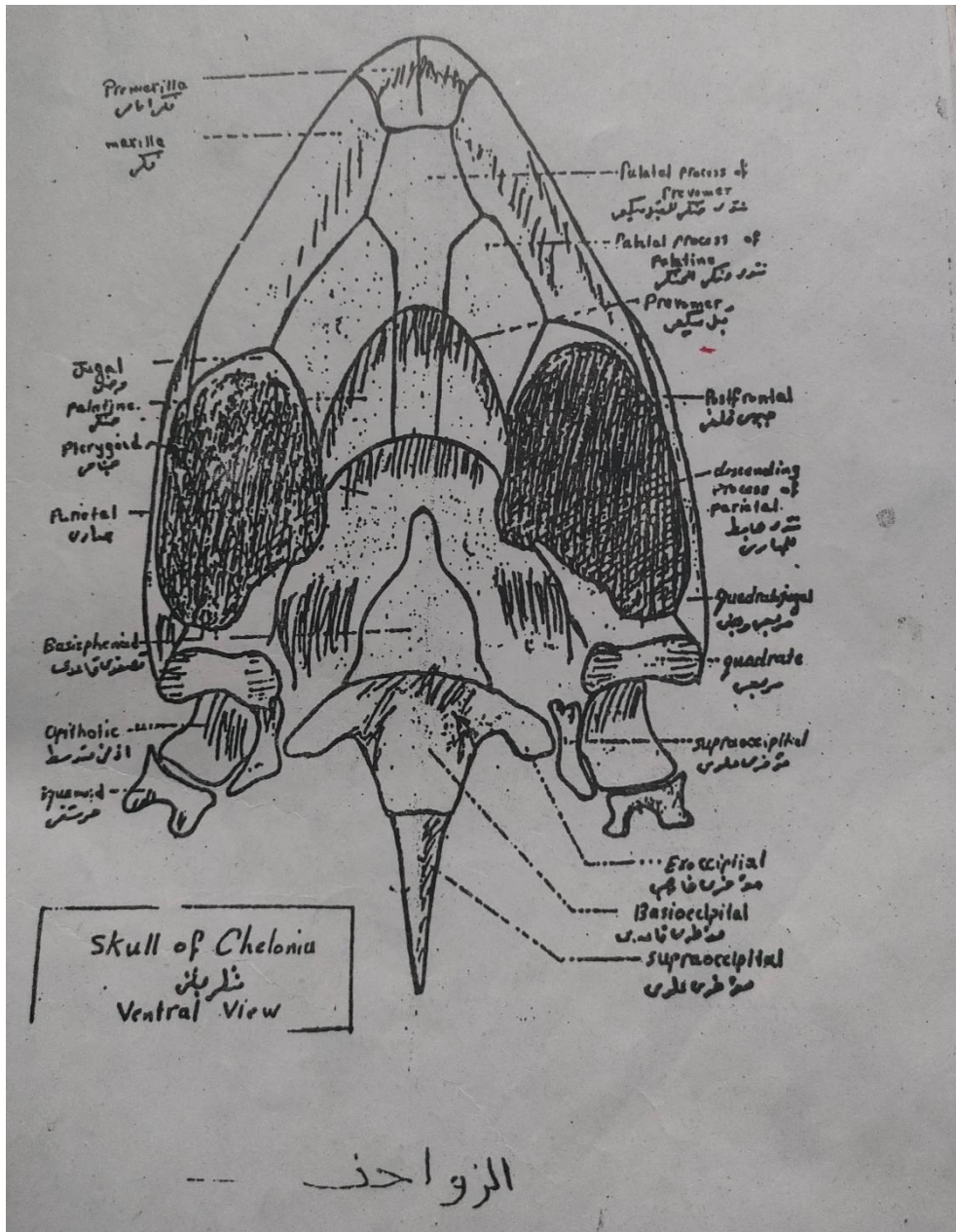


Dorsal view of dog fish skull

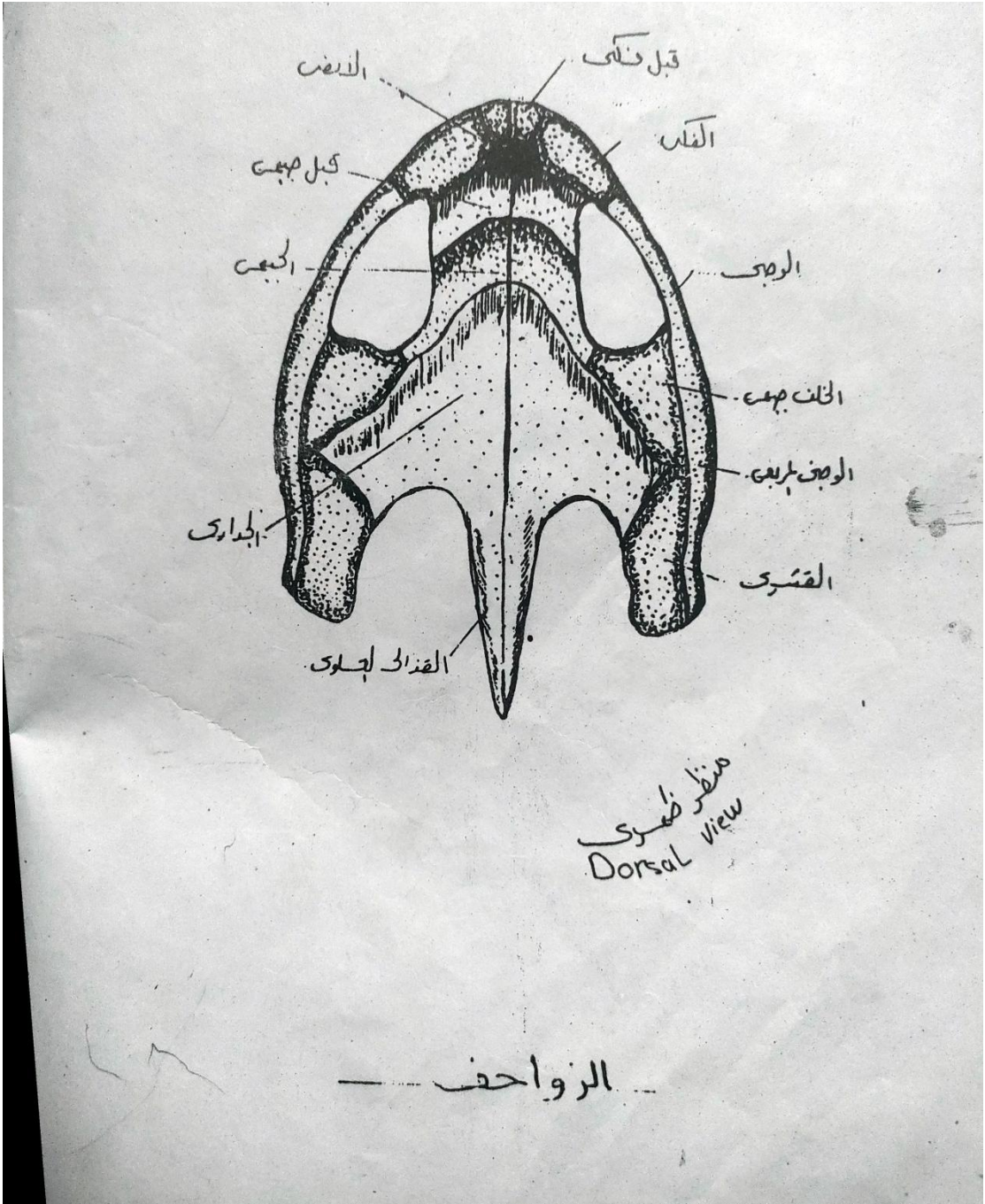


The skull of Toad



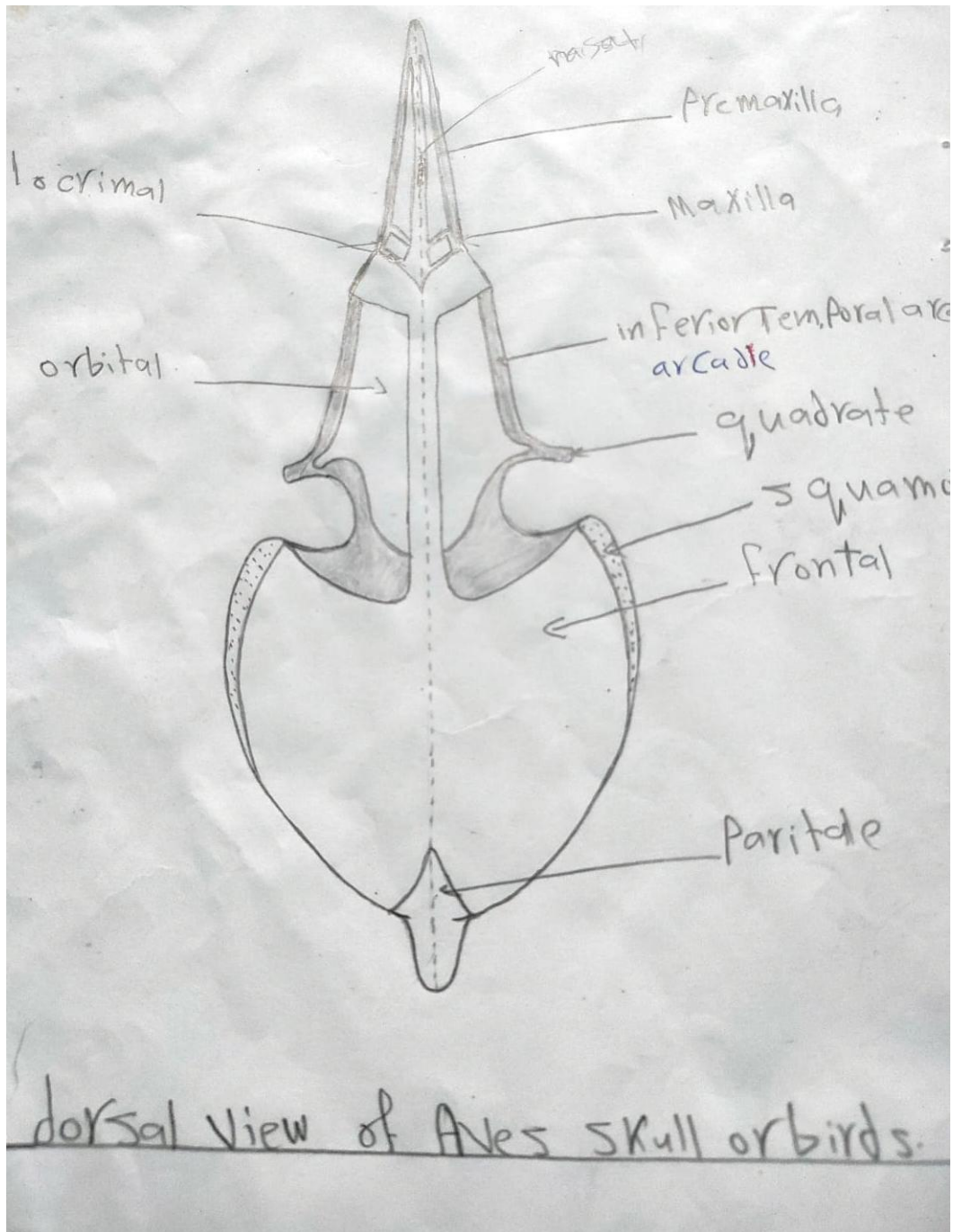


Ventral view of Chelonia skull



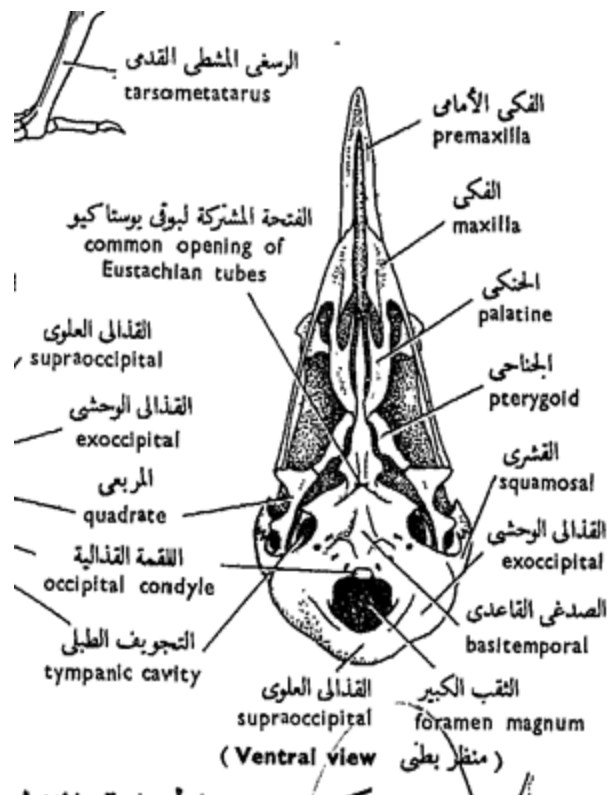
Dorsal view of Chelonia skull



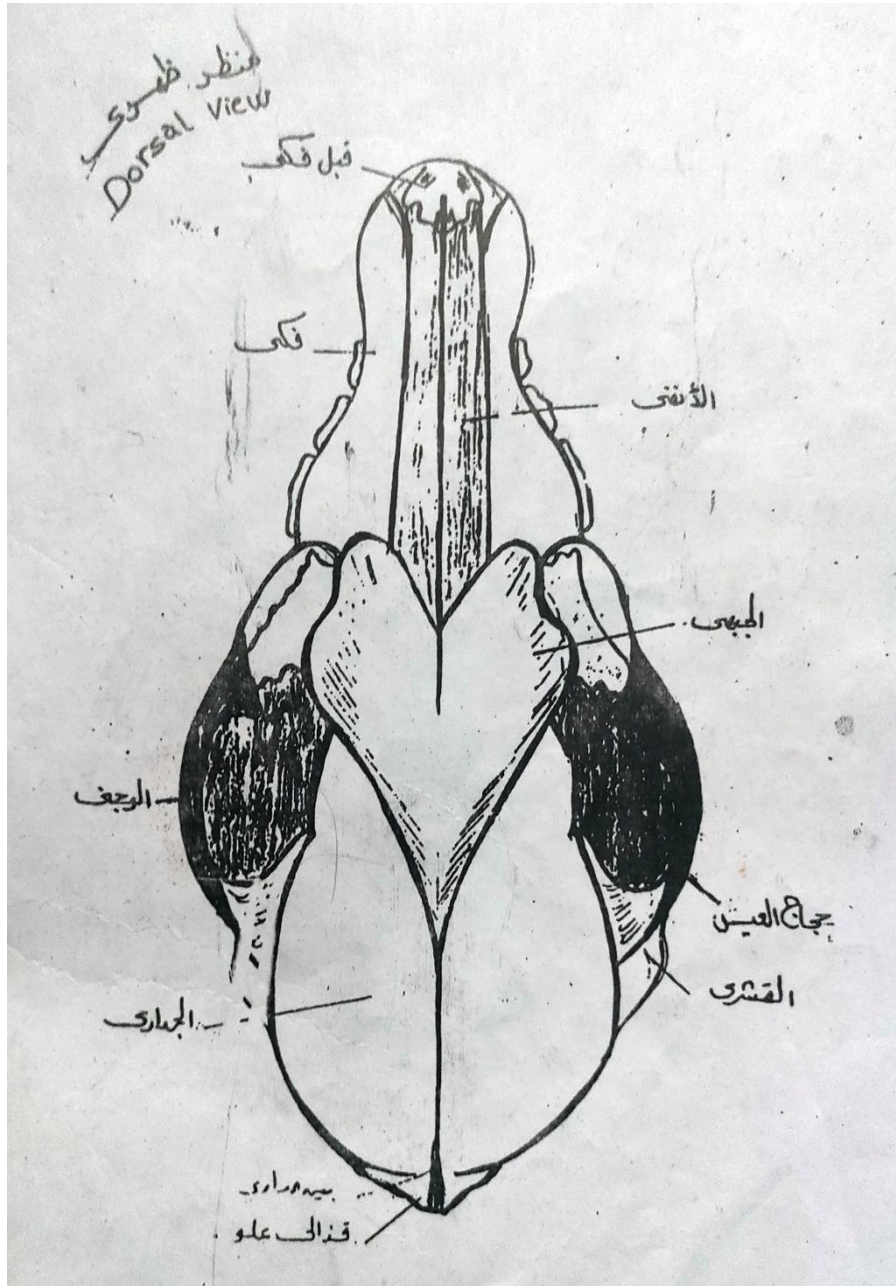


**Dorsal view of Aves skull**



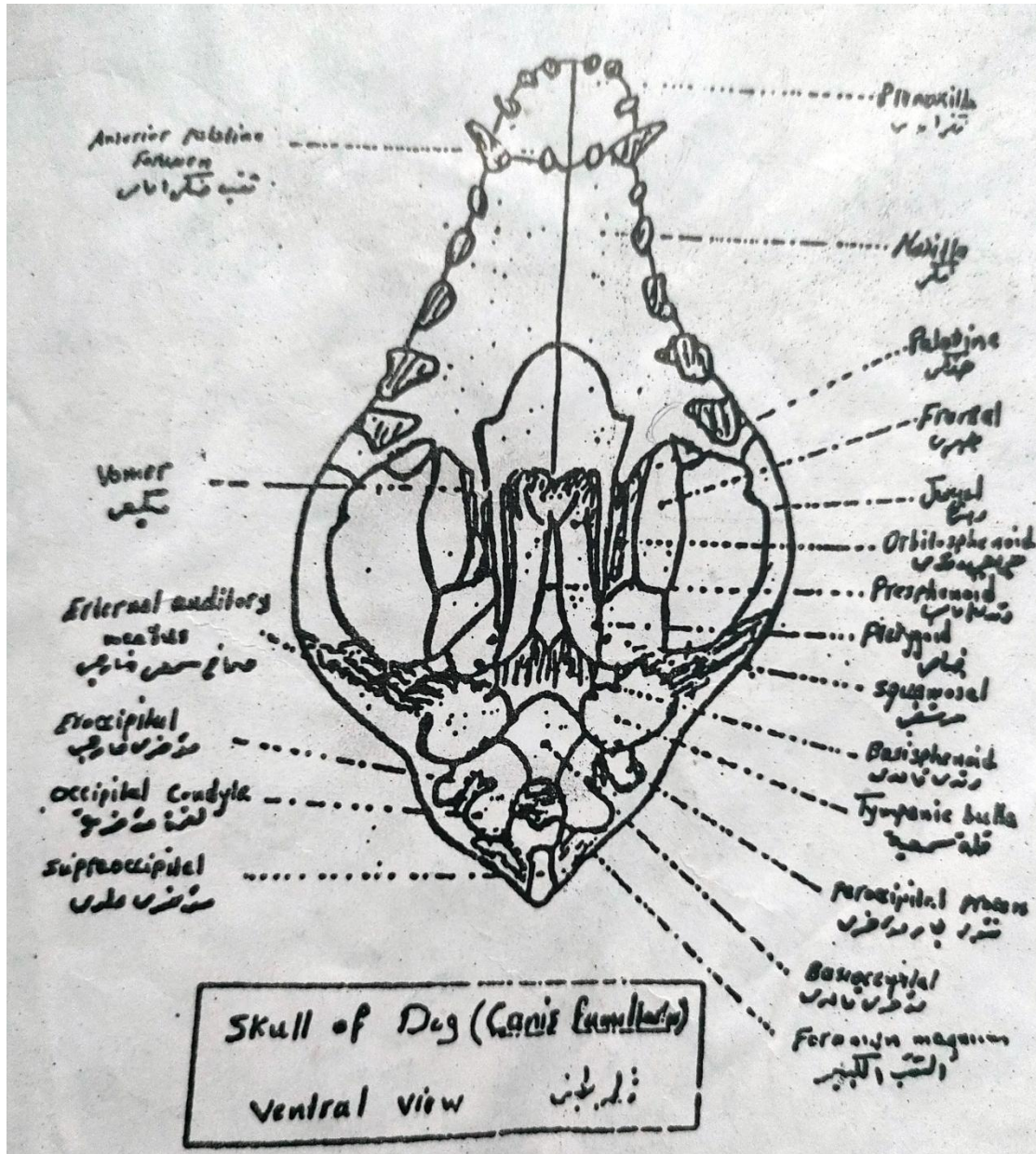


**Ventral view of Aves skull**

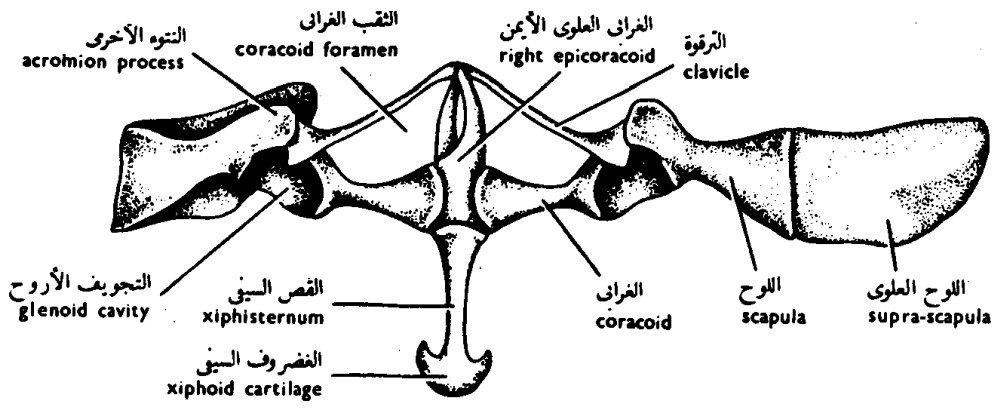


**Dorsal view of Dog skull (Mammalia)**



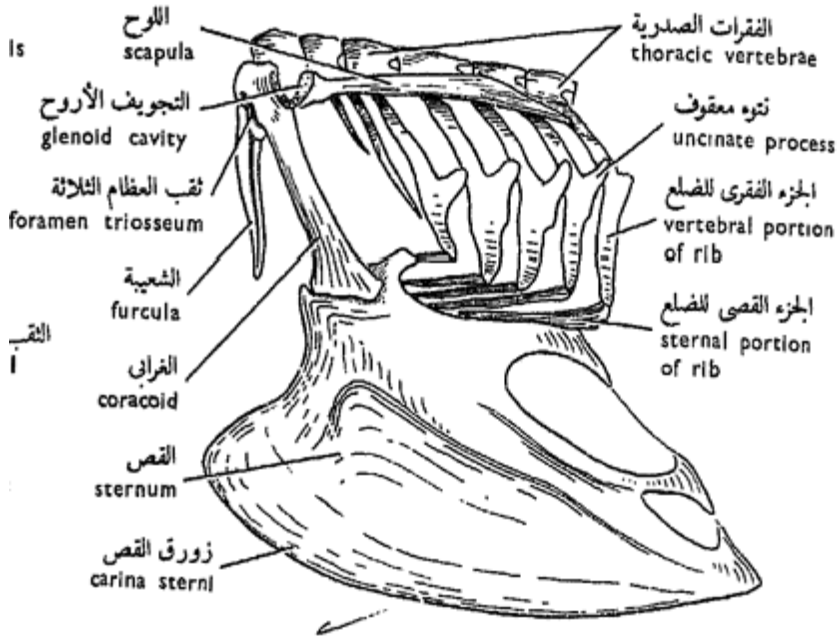


Ventral view of Dog skull (Mammalia)



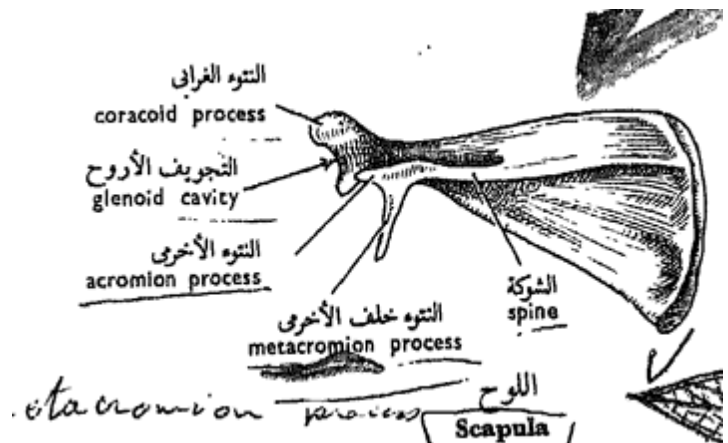
شكل ٣٣ - الحزام الصدري والقوس  
**FIG. 33 - PECTORAL GIRDLE AND STERNUM**

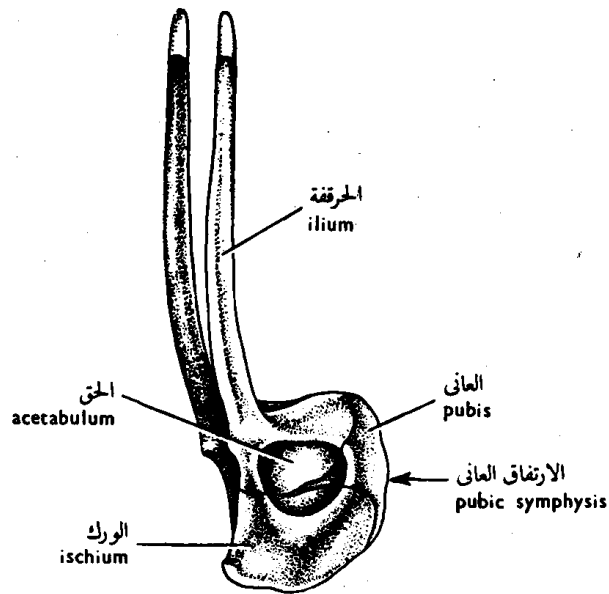
Toad



Skeleton of  
 thorax in Aves

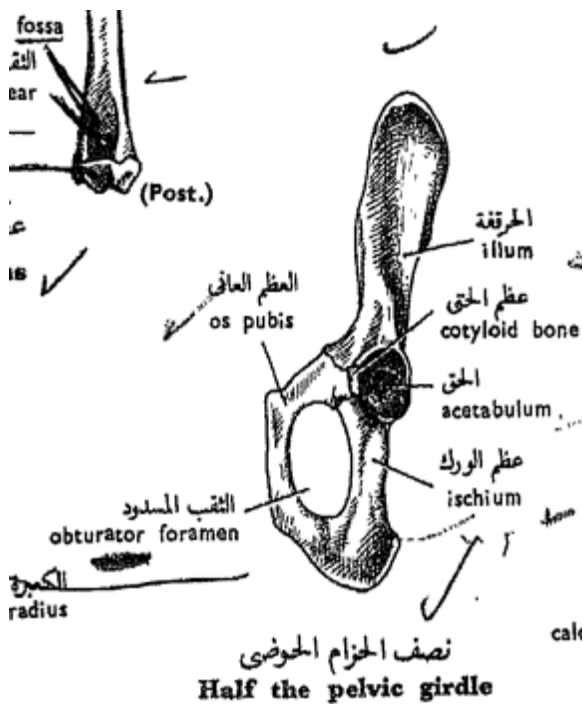
Scapula in Mammalia



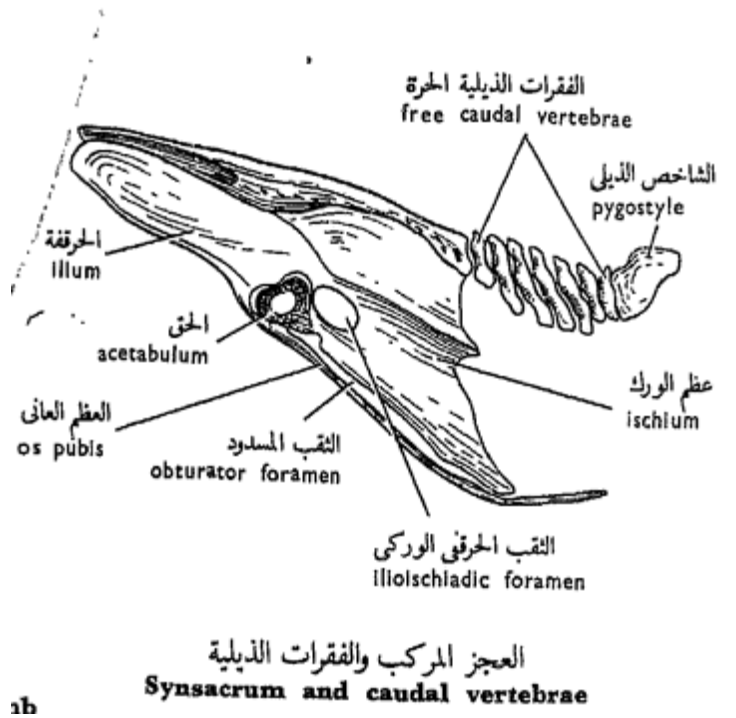


شكل ٣٥ - الحزام الحوضي  
**FIG. 35 - PELVIC GIRDLE**

**Toad**



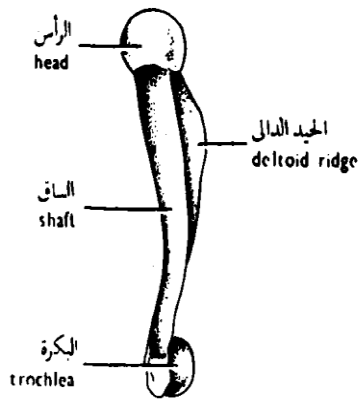
نصف الحزام الحوضي  
**Half the pelvic girdle**



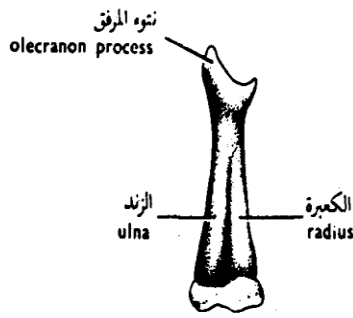
العجز المركب والفقرات الذيلية  
**Synsacrum and caudal vertebrae**

**Aves**

**Mammalia**

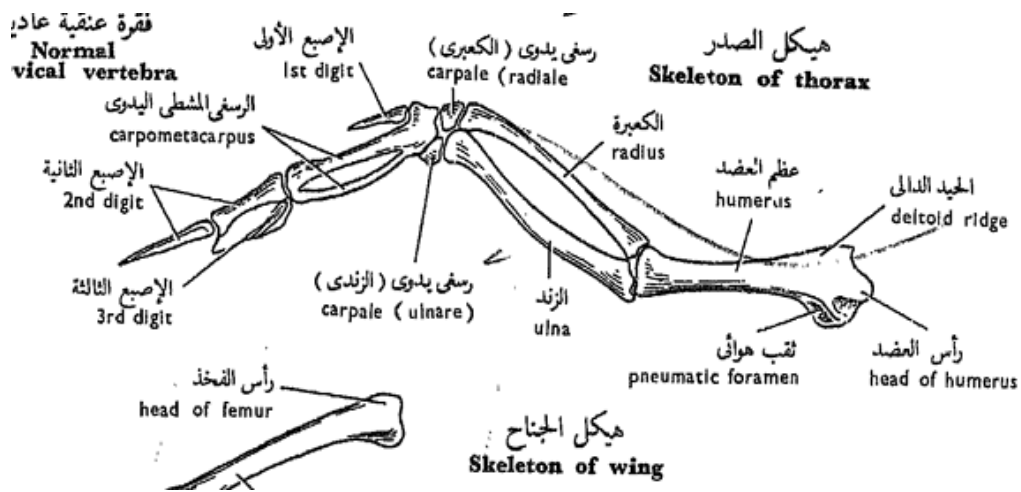


عظم العضد  
**HUMERUS**

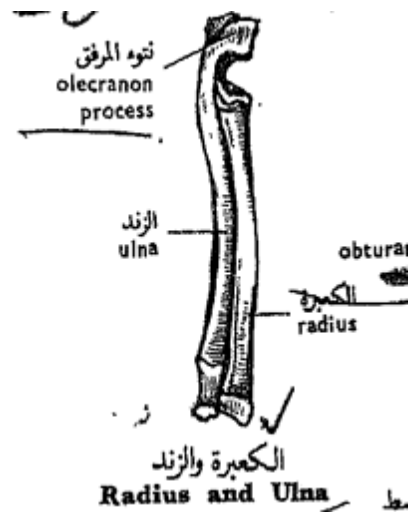
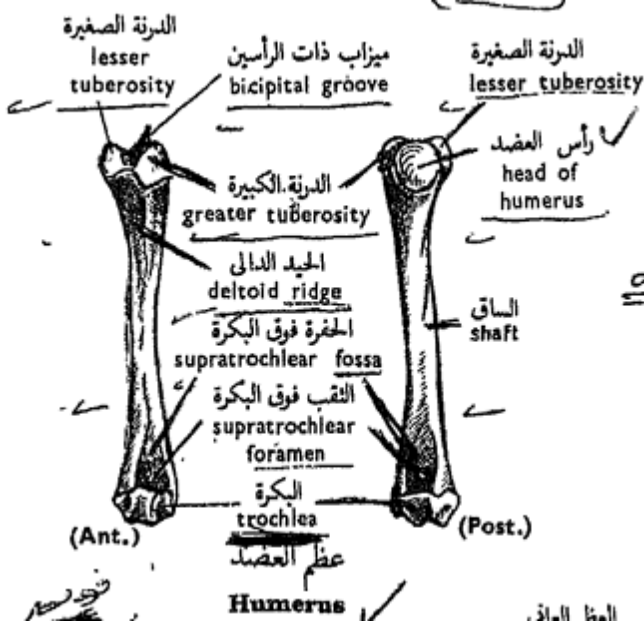


الكعبرى الزندى  
**RADIO-ULNA**

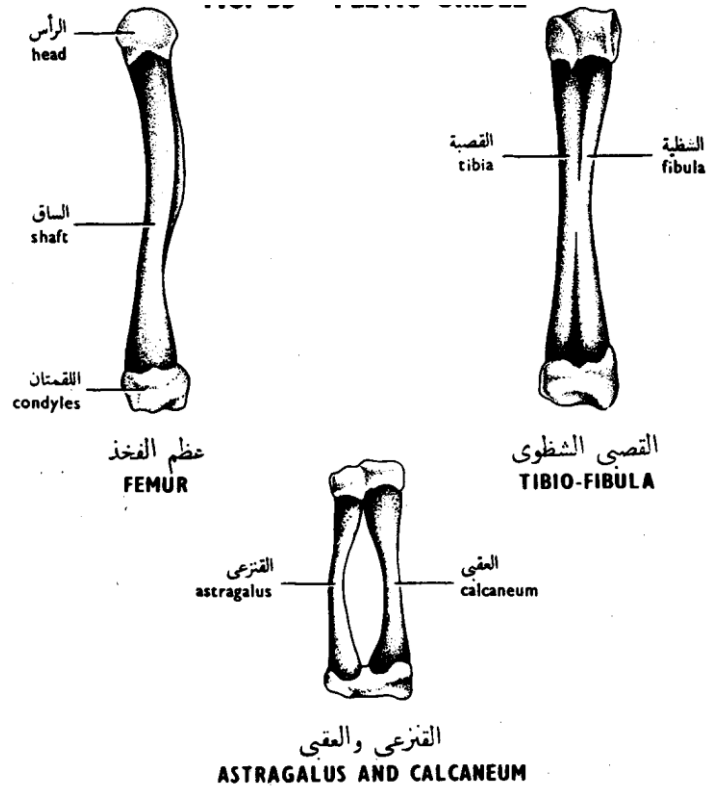
شكل ٣٤ - عظام الطرف الأمامى  
**FIG. 34 - BONES OF FORE-LIMB**



هيكل الجناح  
**Skeleton of wing**



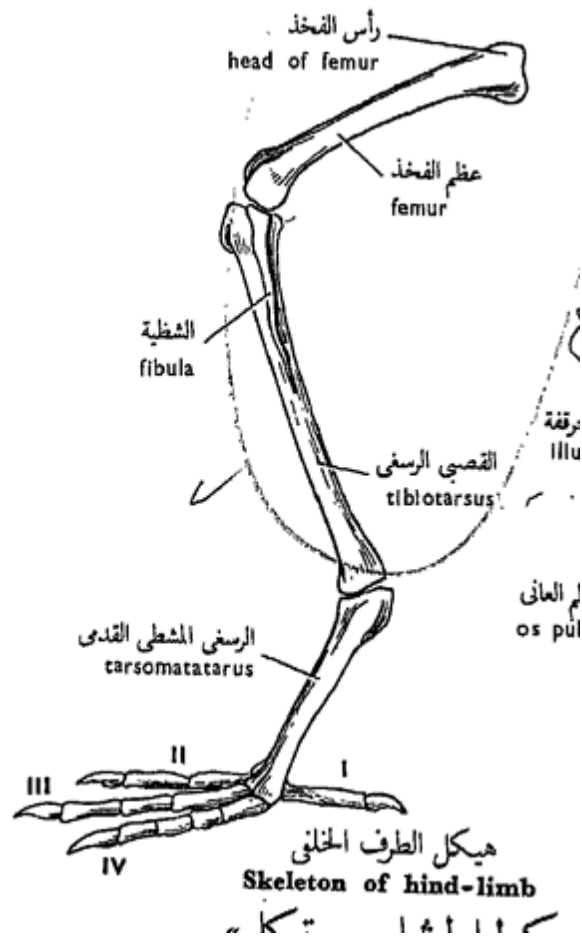
الكعبرة والزند  
**Radius and Ulna**



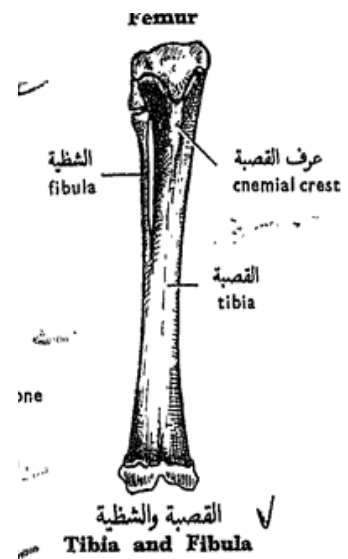
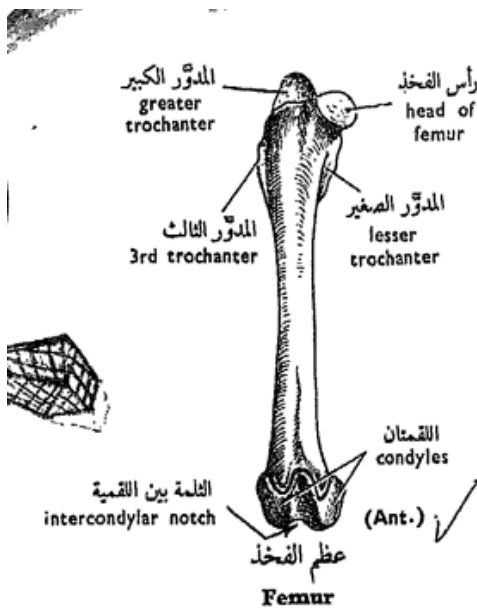
شكل ٣٦ - عظام الطرف الخلفى  
**FIG. 36 - BONES OF HIND-LIMB**

## Toad

# Aves



# Bones of hind -limb in mammalia



## References

- كتاب بيولوجيا الحيوان العملية
- مذكرة تشريح تجمع رسومات الدروس العملية مجهزة من قبل قسم علم الحيوان