



بِسْمِ اللَّهِ الرَّحْمَنِ الرَّحِيمِ



Parasitology - 306 ح  
( 2022 - 2023 )

Prof. Dr. Hoda saady  
كلية العلوم – جامعة جنوب الوادي

## Protozoan parasites

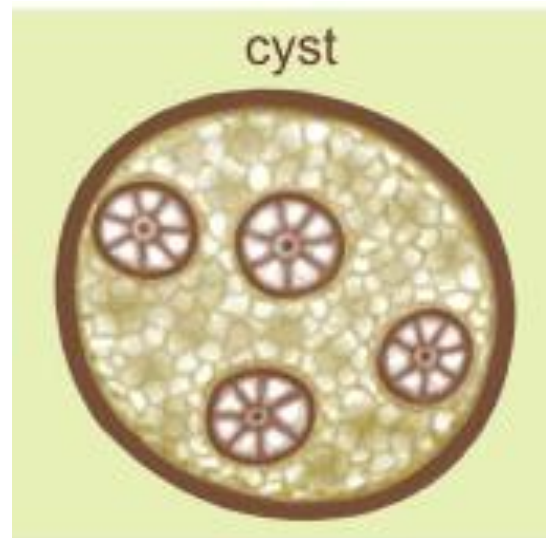
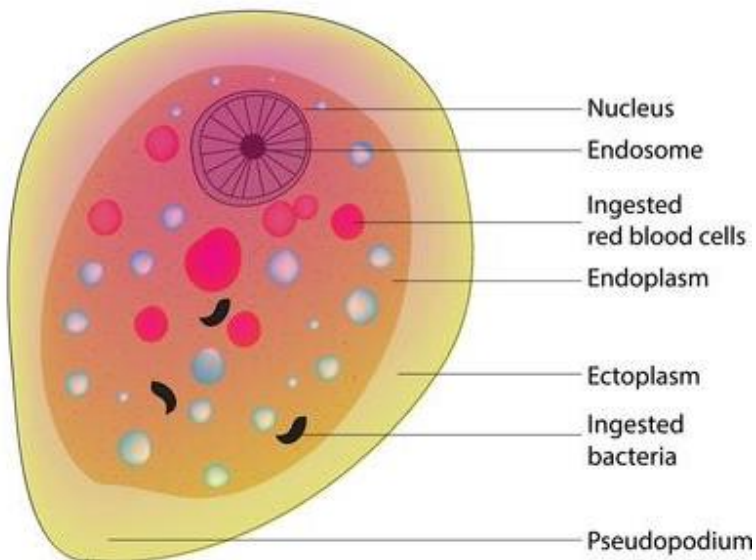
# Entameoba histolytica

Kingdom : Animalia

Phylum : Protozoa

Class : Sarcodina

e.g. : Entameoba histolytica



**Habitat: large intestine**

**Host : definitive host (man) Intermediate host (none)**

**Infective stage : mature cyst ( contain 4 –nuclei)**

# Flagellated protozoan parasites

Types of flagellates according to normal habitat  
1- intestinal species

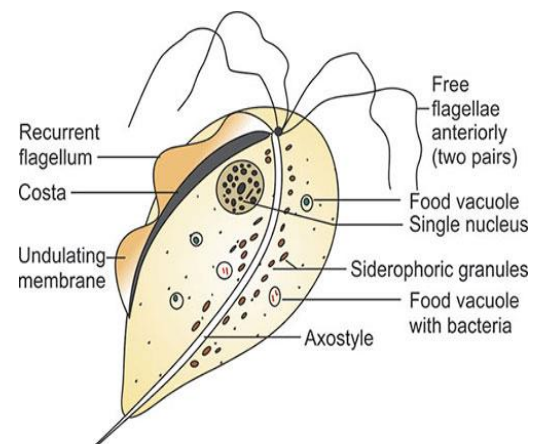
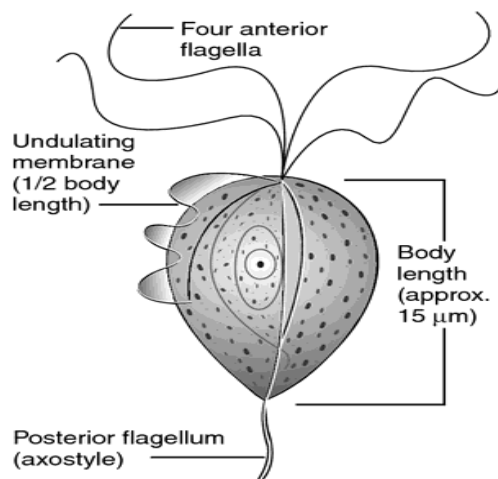
## Trichomonas hominis

Kingdom : Animalia

Phylum : Protozoa

Class : Mastigophora

e.g. : Trichomonas hominis



**Habitat:** large intestine especially caecum of human

**Host :** definitive host (man) Intermediate host (none)

**Infective stage :** Trophozoite

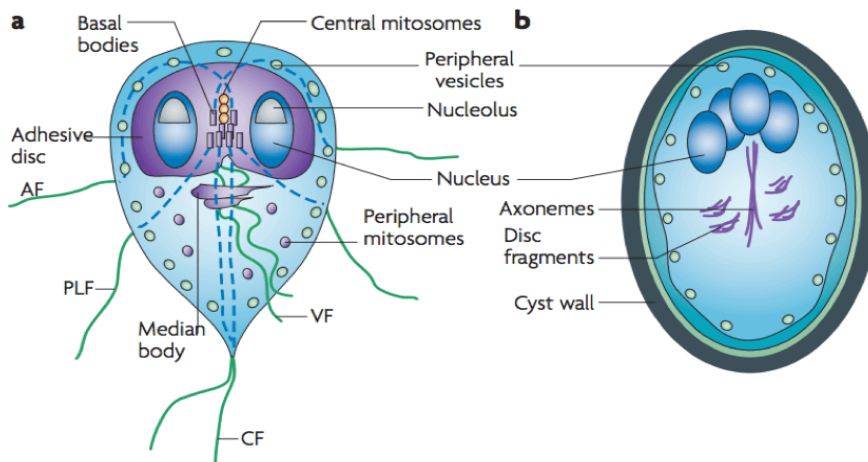
# Giardia lamblia

Kingdom : Animalia

Phylum : Protozoa

Class : Zoomastigophora

e.g. : **Giardia lamblia Kofoid**



**Habitat: Trophozoite: in the upper part of the small intestine, especially in the children. Also in faeces after laxative and diarrhea.**

**Host : definitive host ( human ). Intermediate host (none)**

**Infective stage : the infected form (cyst)**

## 2- blood and tissue species

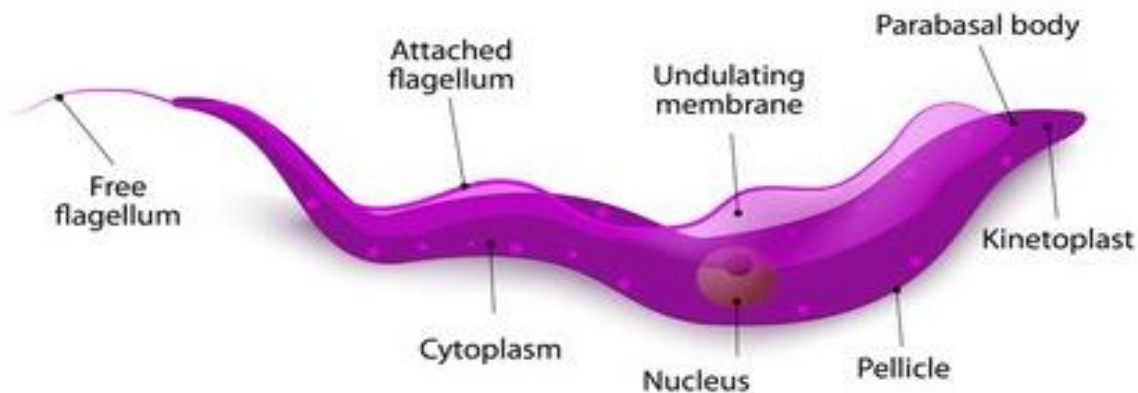
### Trypanosoma sp.

Kingdom : Animalia

Phylum : Protozoa

Class : Mastigophora

e.g. : Trypanosoma sp.



**Habitat: blood stream**

**Host : definitive host ( human )**

**intermediate host ( Tse – Tse fly )**

**recevoir host ( pigs )**

**Infective stage : metacyclic stage**

### 3- urogenital species

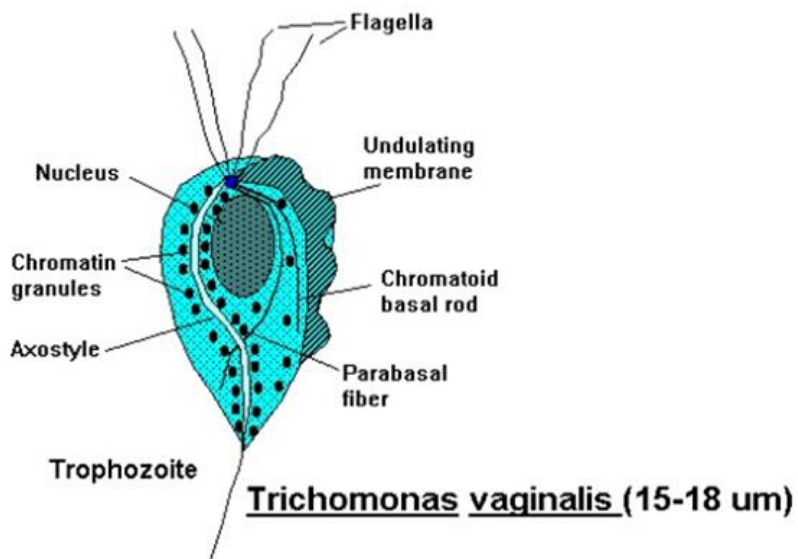
## Trichomonas vaginalis

Kingdom : Animalia

Phylum : Protozoa

Class : Mastigophora

e.g. : Trichomonas vaginalis



habitat : in the genital tract of women and man ( prostate)

hosts : definitive host ( human ) intermediate host ( none )

infective stage : trophozoite

# Ciliated protozoan parasites

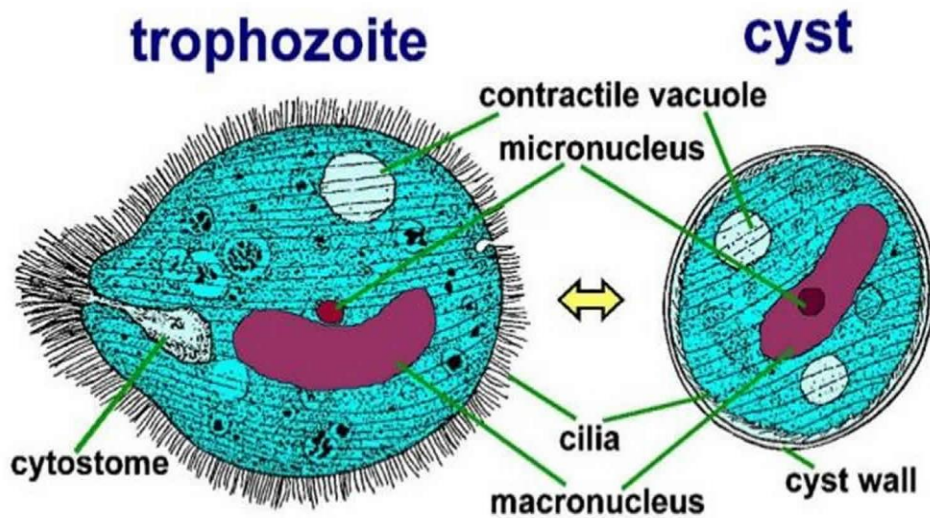
## Balantidium coli

Kingdom : Animalia

Phylum : Protozoa

Class : ciliophora

e.g. : Balantidium coli



Habitat: large intestine

Host : definitive host ( human )

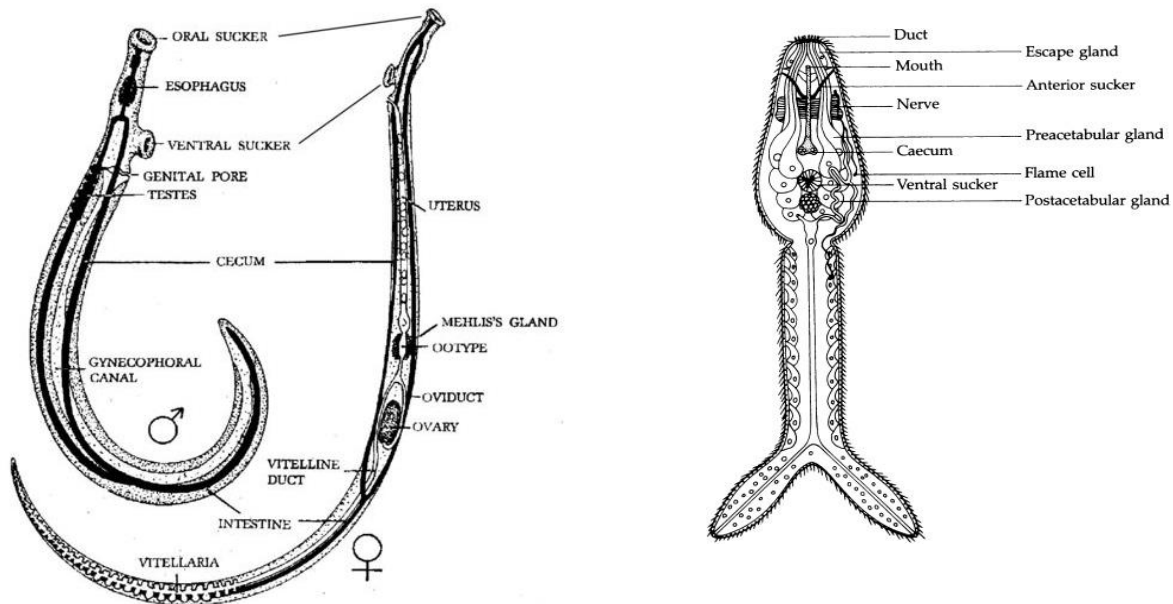
Intermediate host (none)      Receiver host ( pigs)

Infective stage : cyst

# platyhelminthes Helminthes

## Schistosoma haematobium

**Kingdom** : Animalia  
**Subkingdom** : Eumetazoa  
**Phylum** : Platyhelminthes  
**Class** : Trematoda  
**Subclass** : Digenea  
**Family** : Schistosomatidae  
**e.g.** : Schistosoma haematobium



**Habitat:** adults (Hepatic portal veins ).

**oviposition** ( venules of urinary bladder).

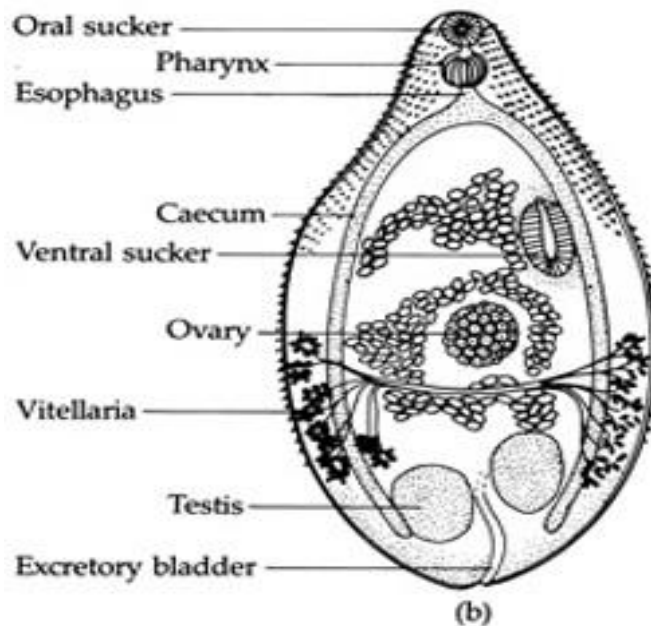
**Hosts** : definitive host ( man ). intermediate host ( *Bulinus truncatus* )  
reservoir host ( monkeys).

**Infective stage** : furcocercous cercariae



# Heterophyes heterophyes

**Kingdom** : Animalia  
**Subkingdom** : Eumetazoa  
**Phylum** : Platyhelminthes  
**Class** : Trematoda  
**Subclass** : Digenea  
**Family** : Heterophyidae  
**e.g.** : Heterophyes heterophyes



**Habitat:** small intestine .

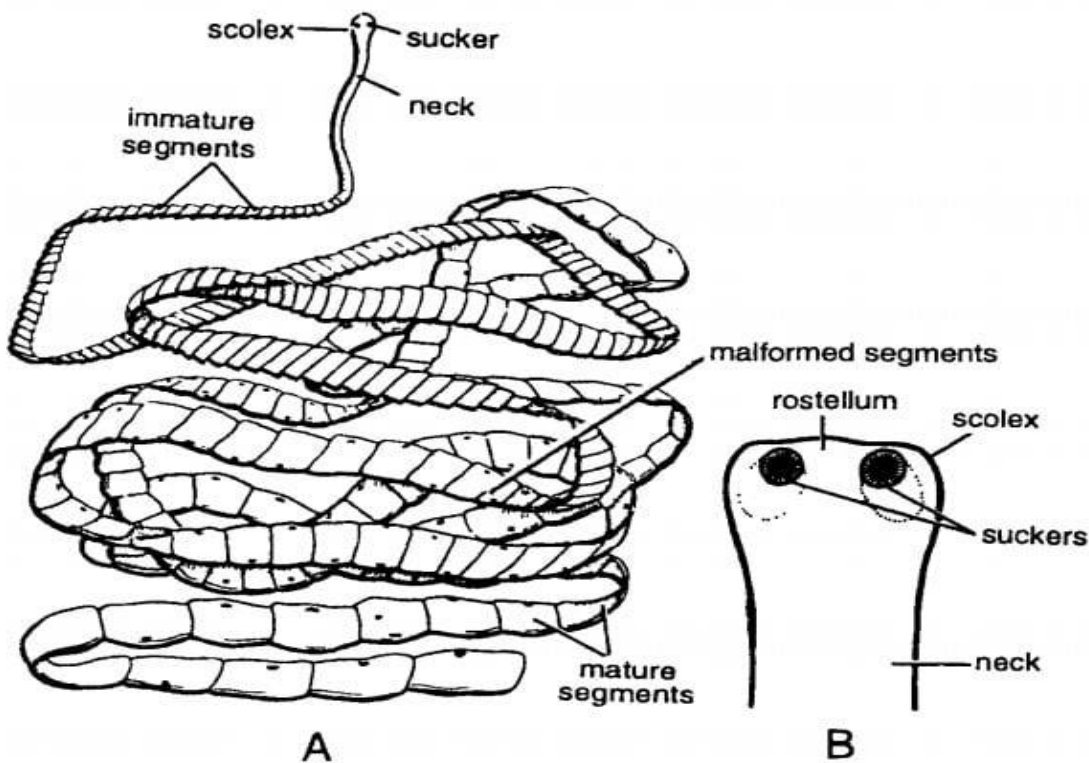
**Hosts :** definitive host ( man ) .

**intermediate host :** snail (first intermediate host) *Pironella conica*  
and (second intermediate host) is fish from freshwater or brackish  
water containing metacercariae (encysted stage).

**Infective stage :** metacercariae

# Taenia saginata

Kingdom : Animalia  
Subkingdom : Eumetazoa  
Phylum : Platyhelminthes  
Class : Cestoda  
Order : Cyclophyllidae  
Family : Taenidae  
e.g. : Taenia saginata



*Taenia saginata*. A. Entire, B. Scolex with neck greatly enlarged.

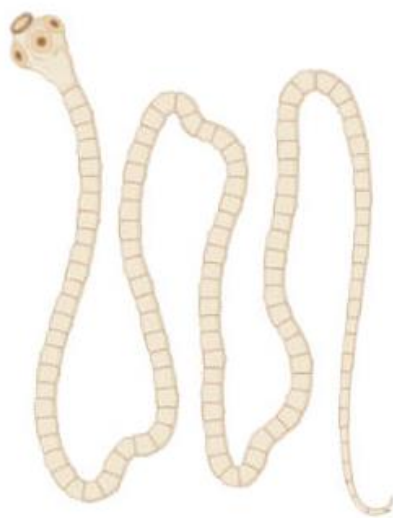
**Habitat: small intestine**

**Hosts : definitive host ( man )    intermediate host ( cows )**

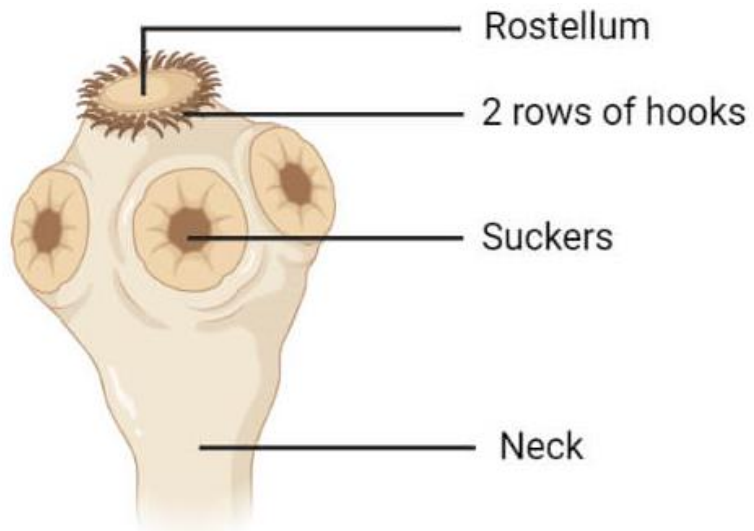
**Infective stage : bladder worm**

# Taenia solium

Kingdom : Animalia  
Subkingdom : Eumetazoa  
Phylum : Platyhelminthes  
Class : Cestoda  
Order : Cyclophyllidae  
Family : Taenidae  
e.g. : Taenia solium



Adult *Taenia solium*



Scolex

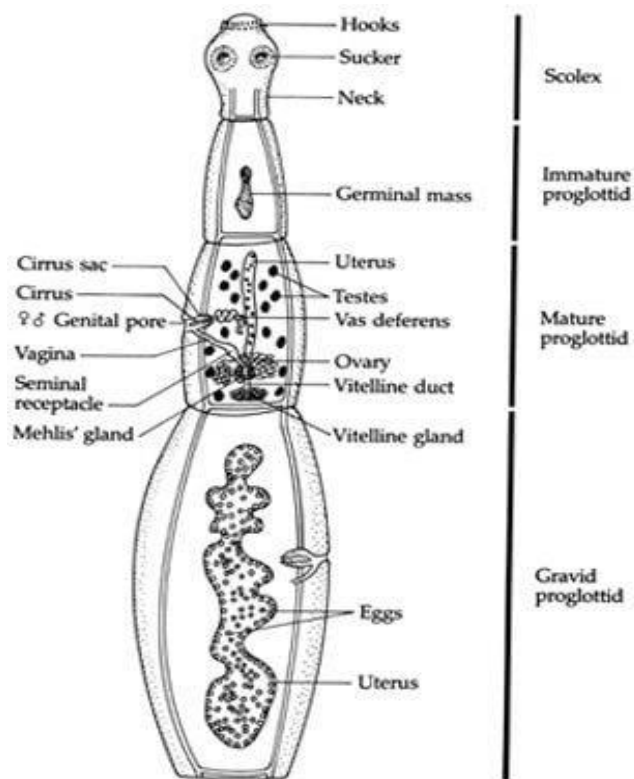
habitat : small intestine

Hosts : definitive host ( man ) intermediate host ( pigs )

Infective stage : bladder worm

# Echinococcus granulosus

Kingdom : Animalia  
Subkingdom : Eumetazoa  
Phylum : Platyhelminthes  
Class : Cestoda  
Order : Cyclophyllidae  
Family : Taenidae  
e.g. : Echinococcus granulosus



Habitat : small intestine

Hosts : definitive host ( dogs and foxs )

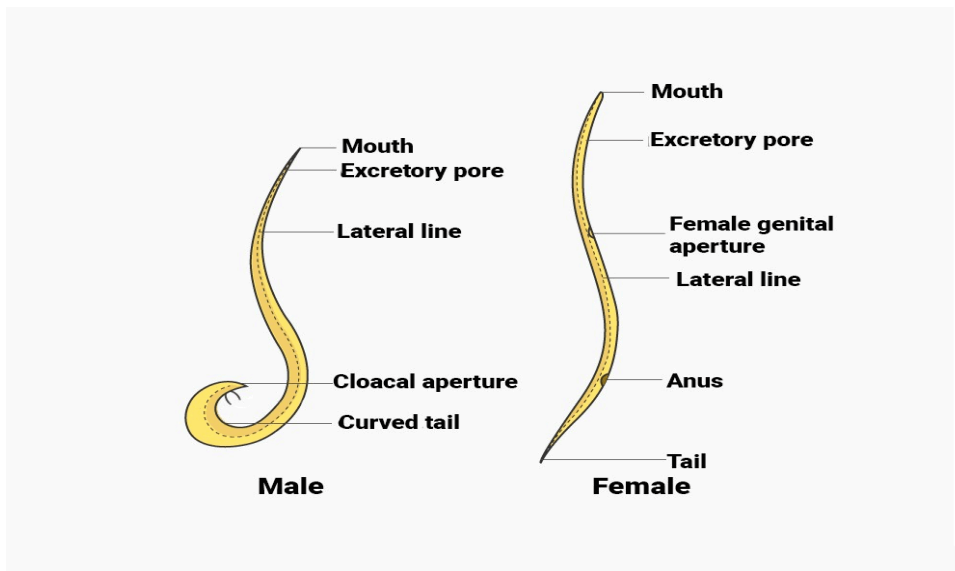
intermediate host ( pigs and maybe man )

infective stage : hydatid cyst

# Aschelminthes

## Ascaris vitulorum

Kingdom : Animalia  
Subkingdom : Eumetazoa  
Phylum : Aschelminthes  
Class : Nematoda  
Order : Ascaridata  
Family : Ascaridae  
e.g. : Ascaris vitulorum



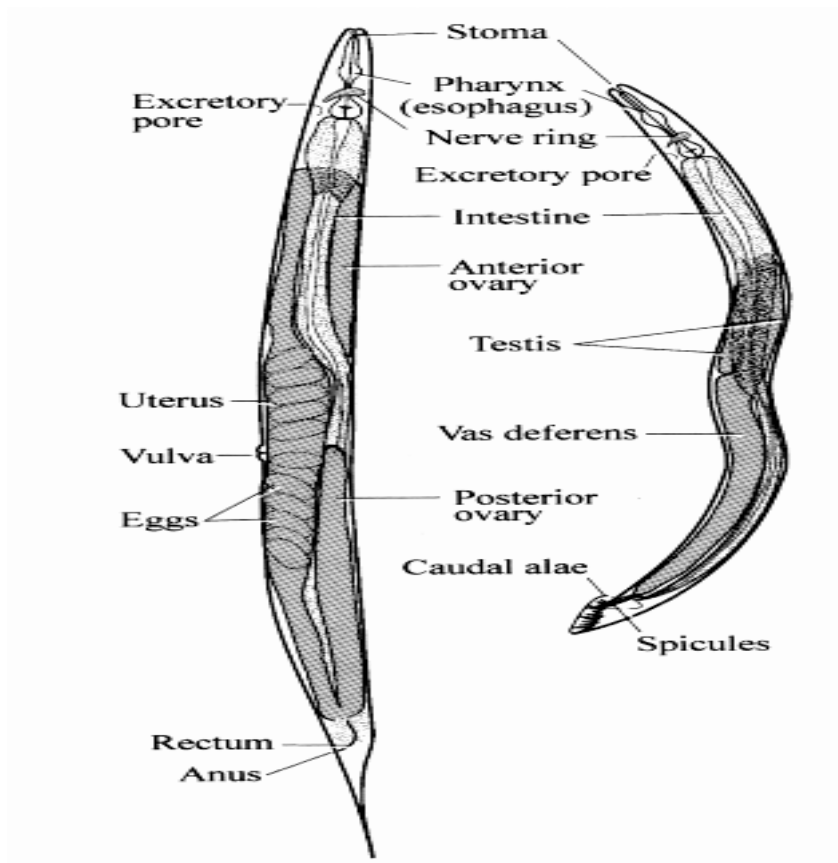
habitat : small intestine

hosts : definitive host ( cows ) intermediate host ( none )

infective stage : embryonate egg

# Enterobius Vermicularis

Kingdom : Animalia  
Subkingdom : Eumetazoa  
Phylum : Aschelminthes  
Class : Nematoda  
Order : Oxyurata  
Family : Oxyuridae  
e.g. : Enterobius Vermicularis



Habitat : large intestine , specially colon and appendix

Hosts : definitive host ( man ) intermediate host ( none)

Infective stage : embryonate egg

# Ancylostoma duodenale

Kingdom : Animalia  
Subkingdom : Eumetazoa  
Phylum : Aschelminthes  
Class : Nematoda  
Order : Strongylata  
Family : Ancylostomatidae  
e.g. : Ancylostoma duodenale

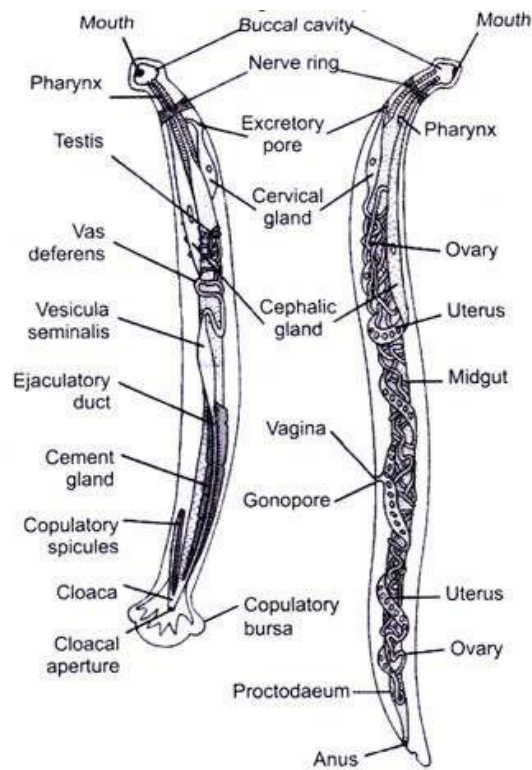


Fig. 9.20 Male and Female *A. duodenale*

habitat : small intestine

Hosts : definitive host ( man ) intermediate host ( none)

Infective stage : filariform larvae

