



# **Parasitology & Malacology**

**Zoo 404**

**(Practical Part)**

**Second semester**

**Prepared by**

**Dr. Soheir A. H. Rabie**

**Faculty of Science**

**Zoology Department**

**2022-2023**

## **Book data**

---

**Faculty: Science**

**Group: Fourth**

**Division: Zoology**

**Publication date: Second semester**

**2022-2023**

**Number of pages: 17**

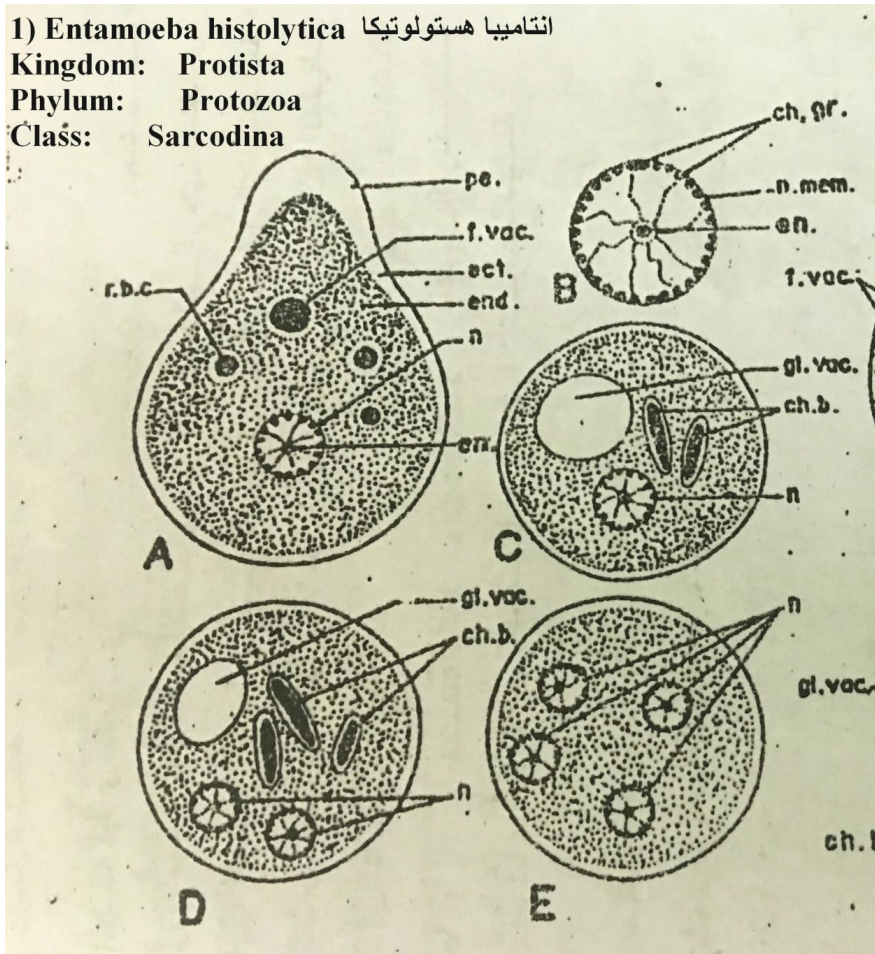
# 1) *Entamoeba histolytica*

انتاميبا هستولوتیکا

Kingdom: Protista

Phylum: Protozoa

Class: Sarcodina

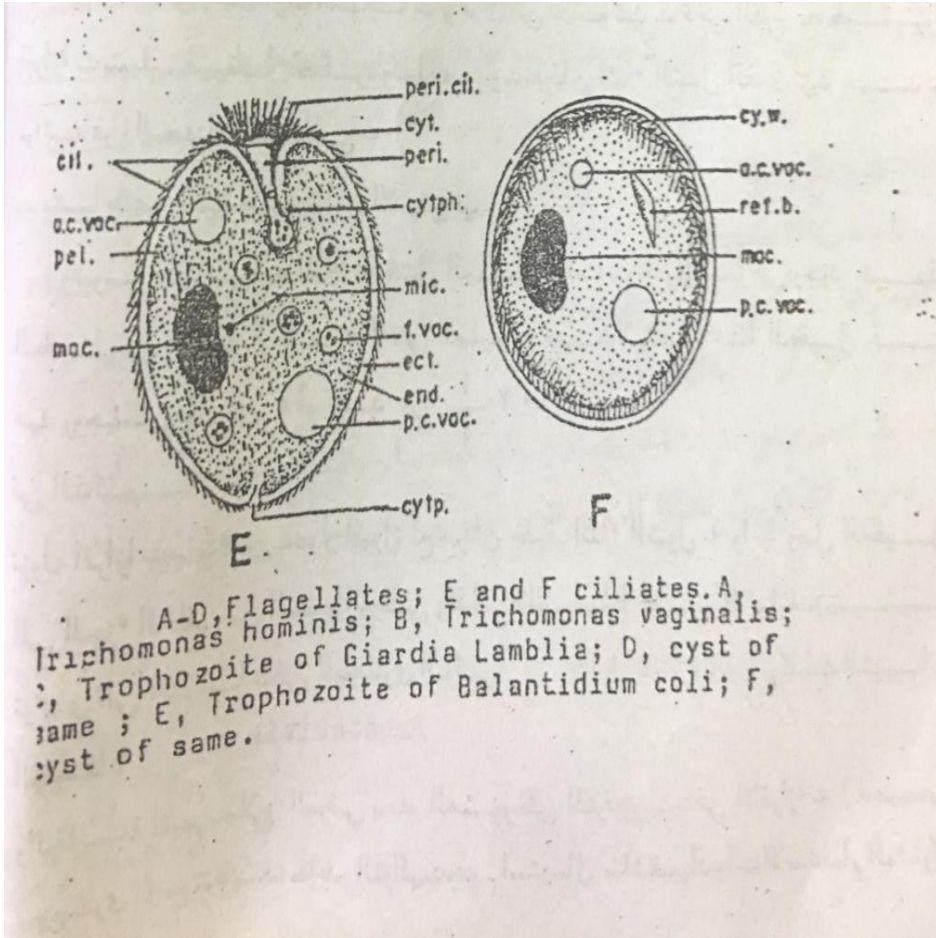


## 2- *Balantidium coli*

Kingdom: Protista

Phylum: Protozoa

Class: Ciliophora



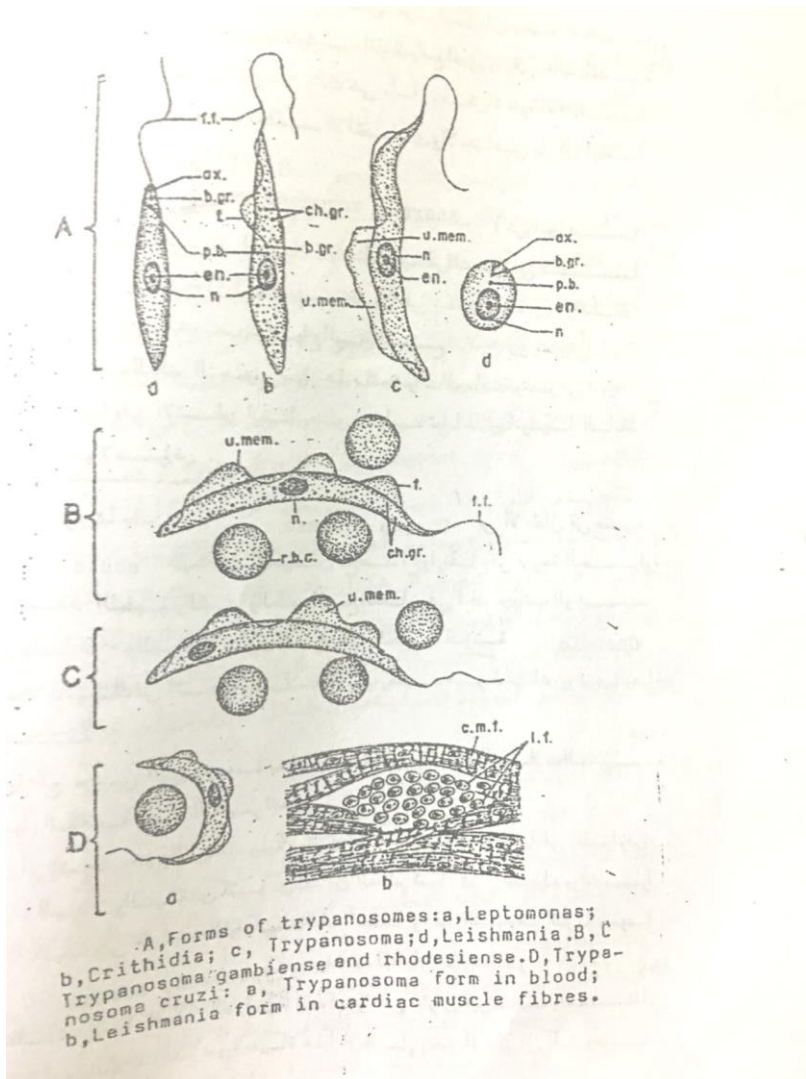
### 3) *Trypanosoma*

Kingdom: Protista

Phylum: Protozoa

Class: Mastigophora

e.g: Trypanosoma sp.

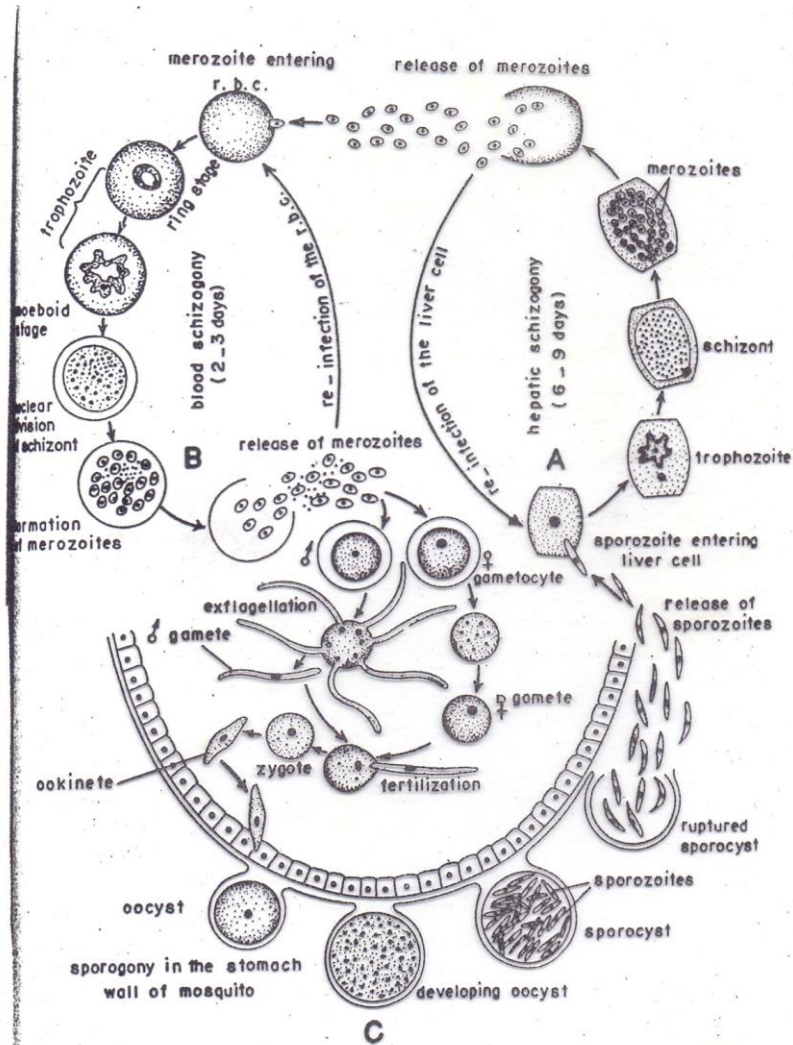


## 4) Plasmodium

Phylum : Apicomplexa

Class: Sporozoa

Family: Plasmodidae



Life cycle of a malarial parasite: A and B, asexual cycle in man (A, cycle inside the liver cell; B, cycle inside the red blood corpuscle); C, sexual cycle in the stomach of mosquito.

## 5) Fasciola

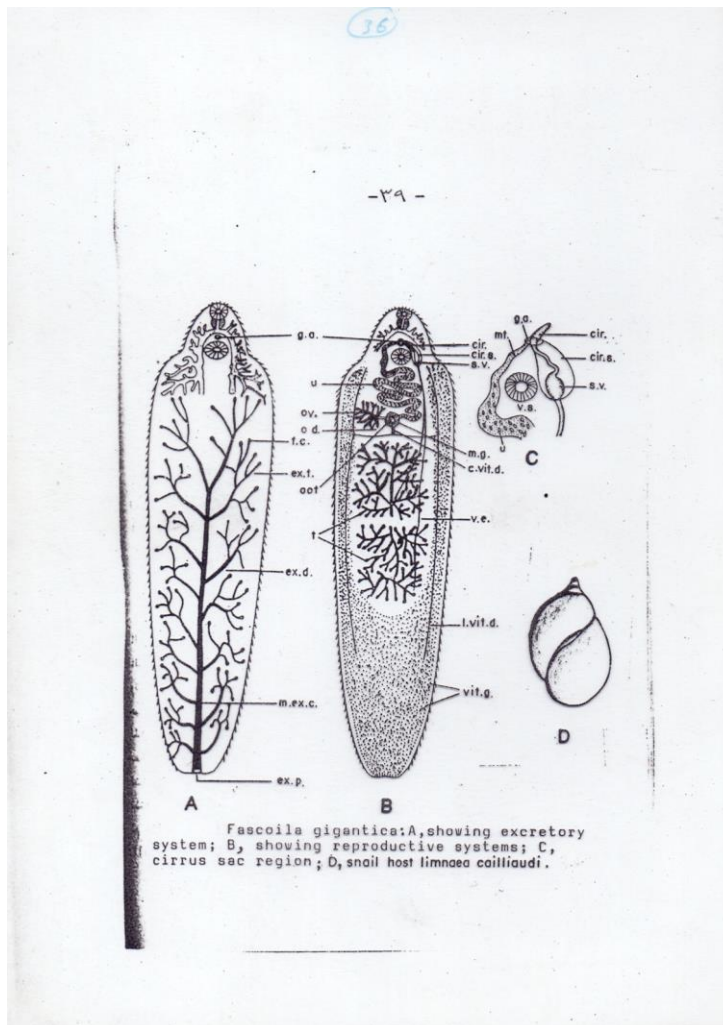
Phylum : Platyhelminthes

Class: Trematoda

Order: Digenea

Family: Fasciolidae

❖ *Fasciola gigantica*



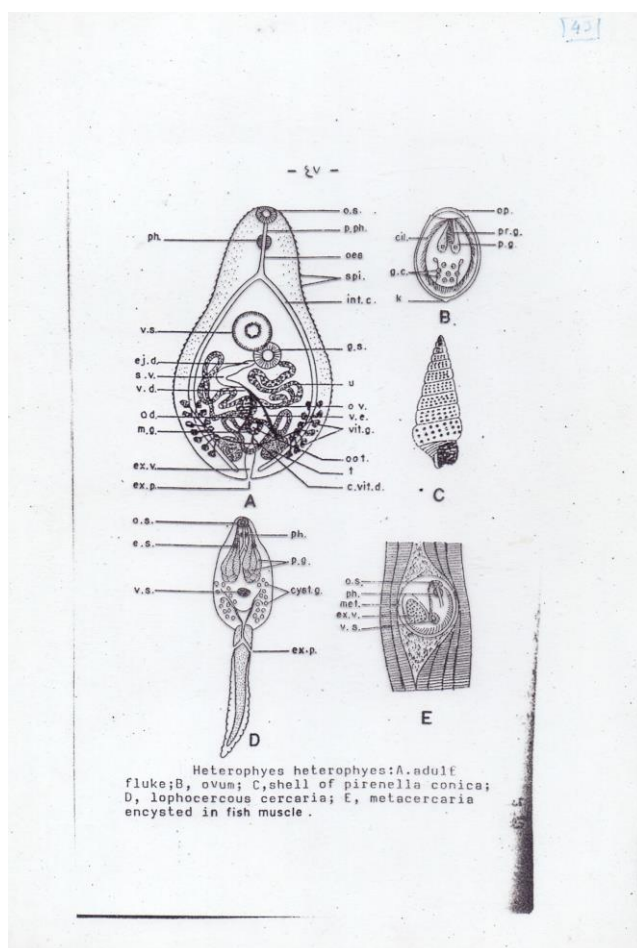
## 6) *Heterophyes heterophyes*

Phylum : Platyhelminthes

Class: Trematoda

Order: Digenea

Family: Heterophidae





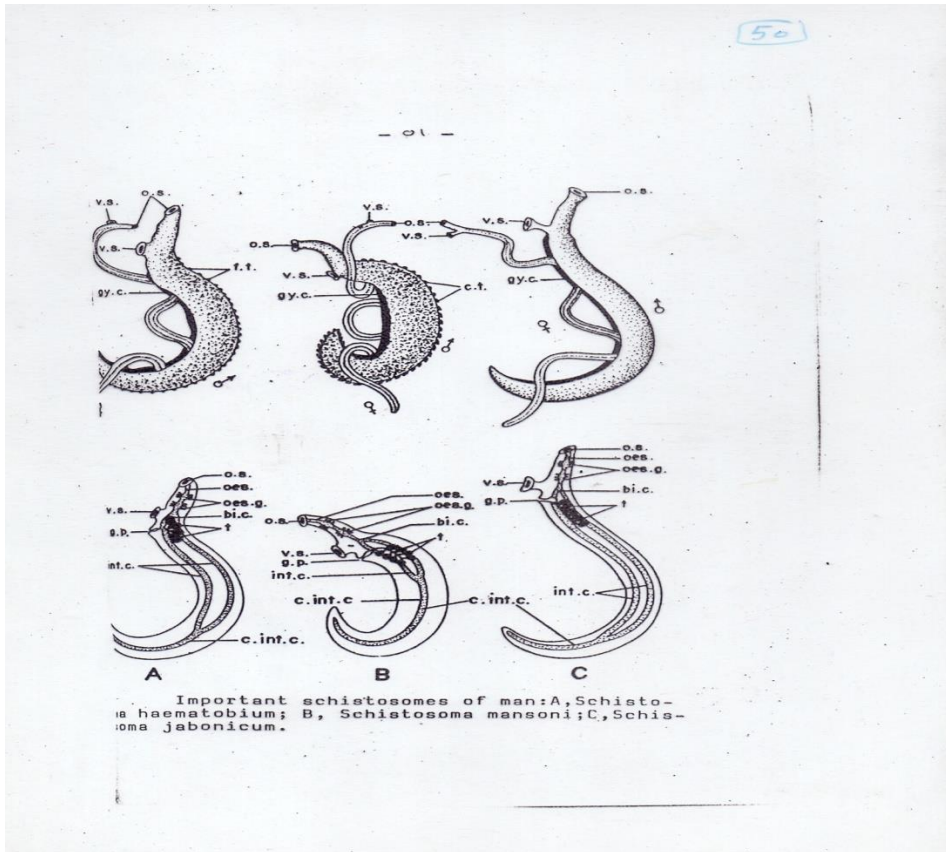
## 7) *Schistosoma haematobium*

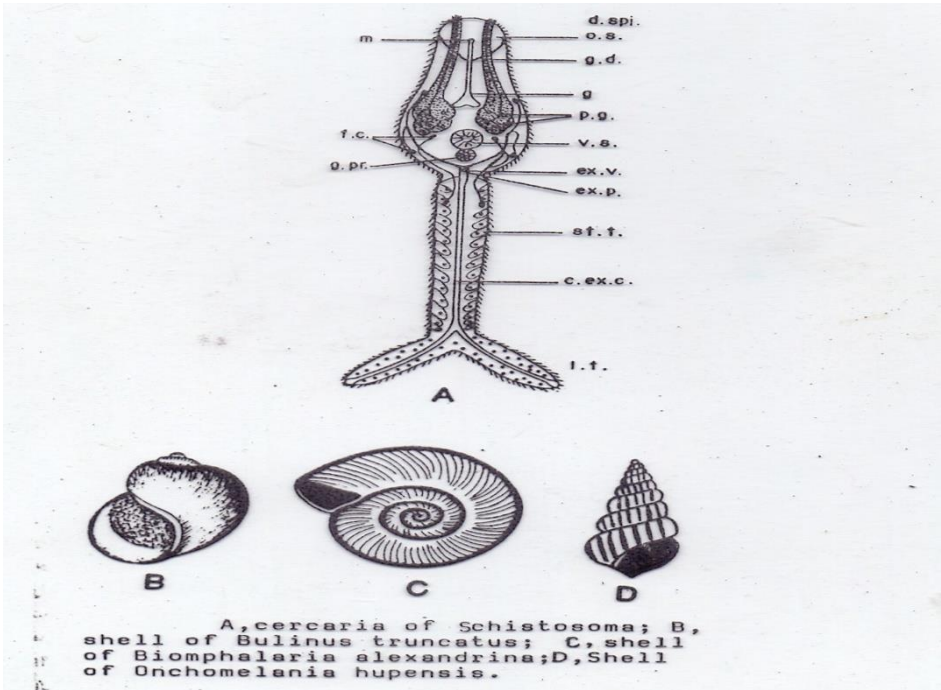
Phylum : Platyhelminthes

Class: Trematoda

Order: Digenea

Family: Schistosomatidae





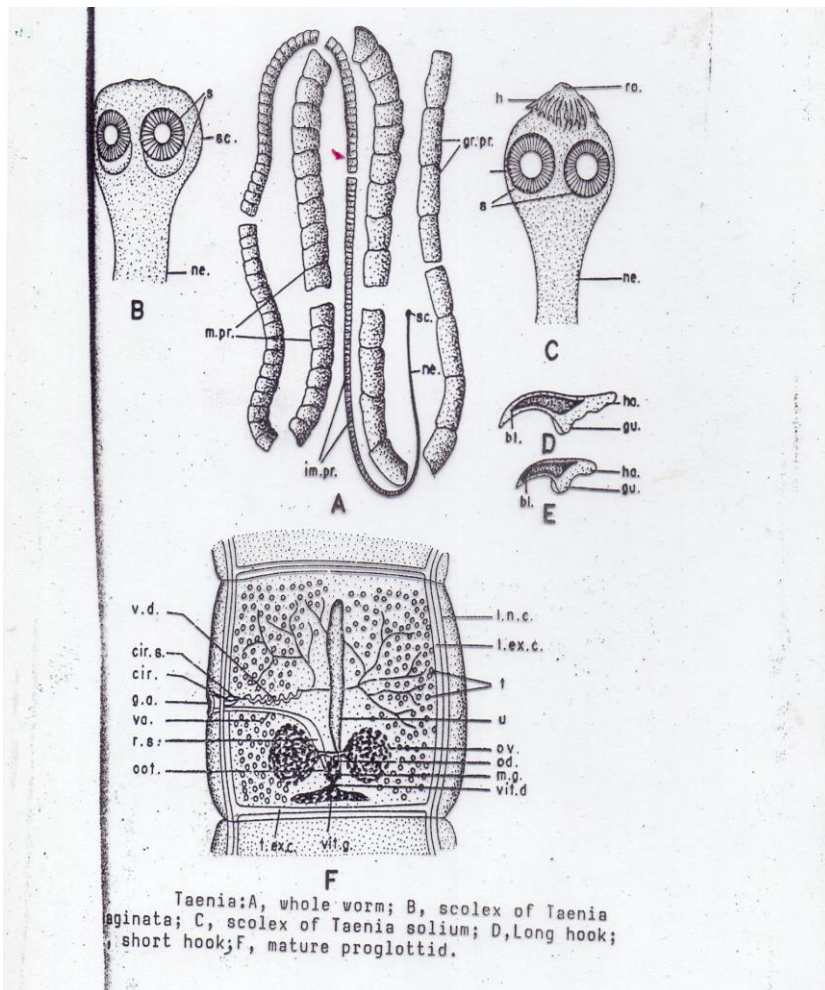
## 8) *Taenia saginata*

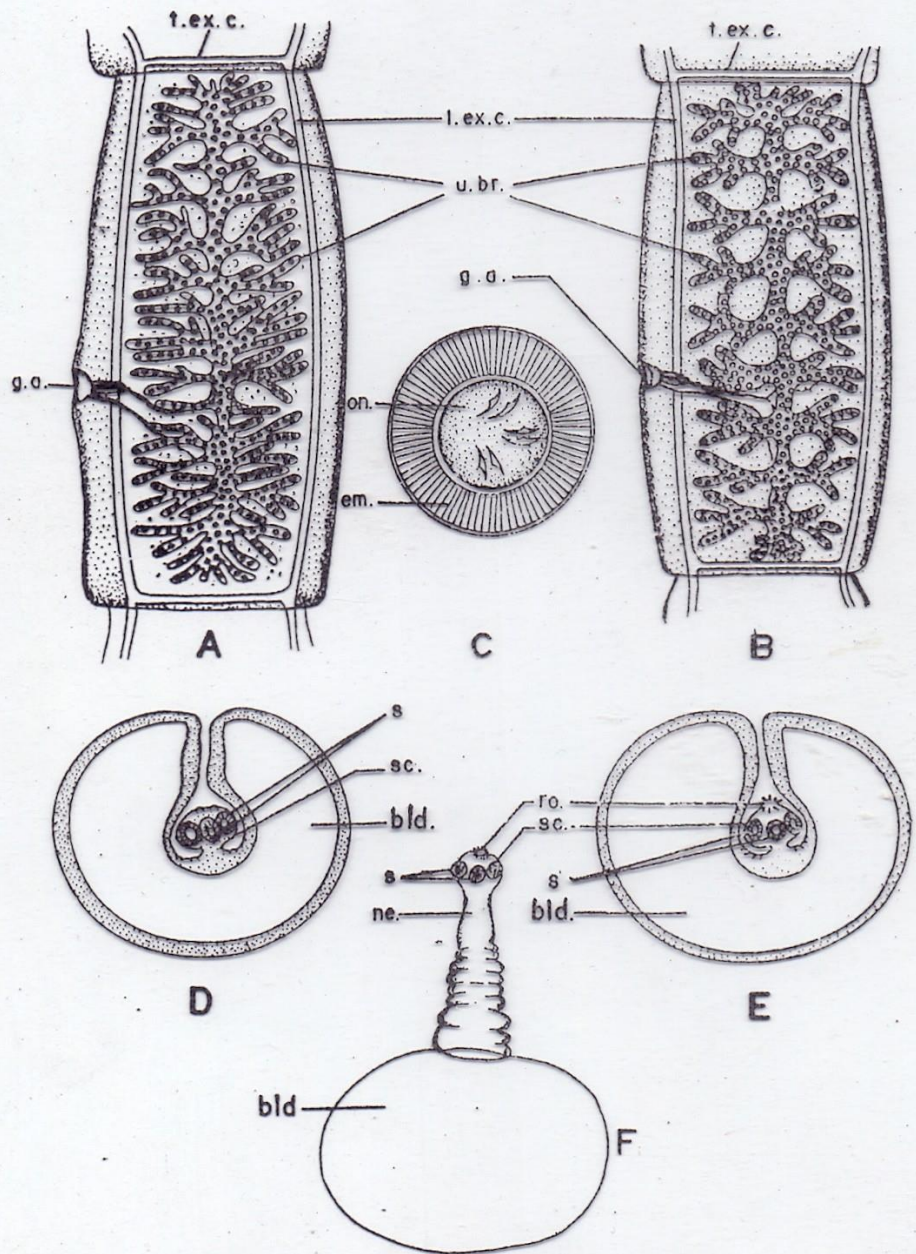
Phylum : Platyhelminthes

Class: Cestoda

Order: Cyclophyllidea

Family: Taeniidae





Taenia: A and B, gravid proglottides of *T. saginata* and *T. solium*; C, egg; D, *Cysticercus bovis*; E, *Cysticercus cellulosae*; F, *Cysticercus cellulosae* with evaginated scolex.

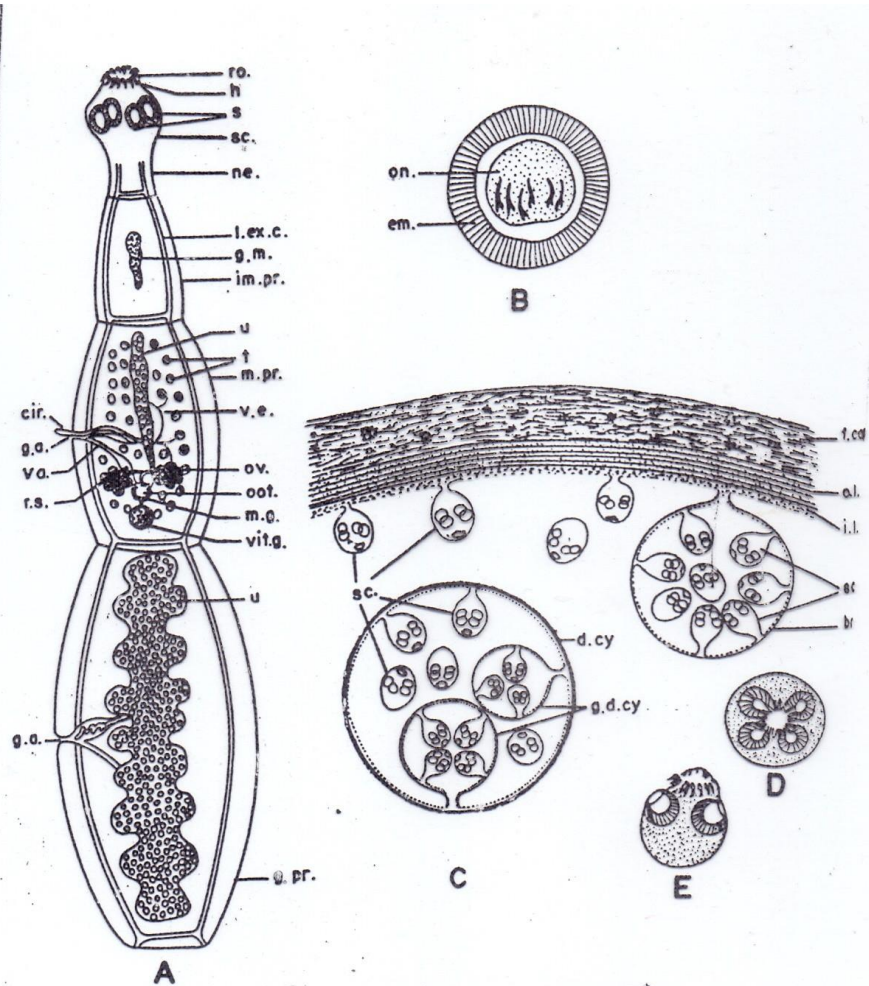
## 9) *Echinococcus granulosus*

الدودة الشريطية ذات الكيس الديداني

Phylum : Platyhelminthes

Class: Cestoda

Order: Cyclophyllidea



*Echinococcus granulosus*: A, adult; B, egg; C, part of hydatid cyst; D, scolex on top view; E, scolex evaginal

## 12) *Dipylidium caninum*

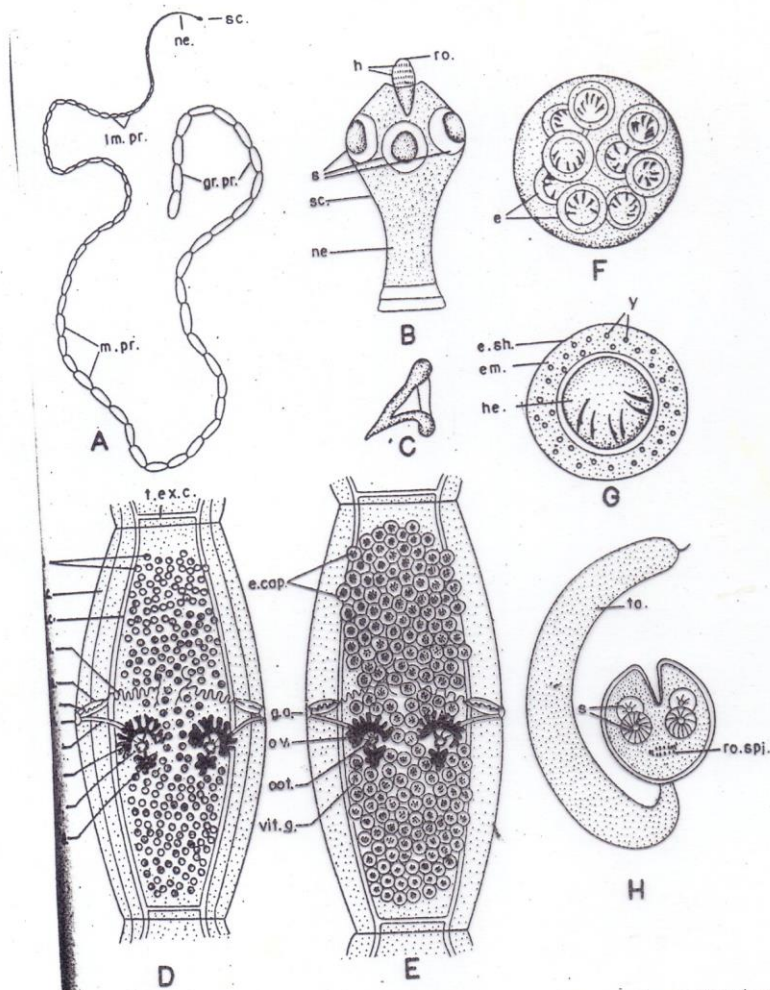
### دودة الكلب الشريطية

Phylum : Platyhelminthes

Class: Cestoda

Order: Cyclophyllidea

Family: Dilepididae



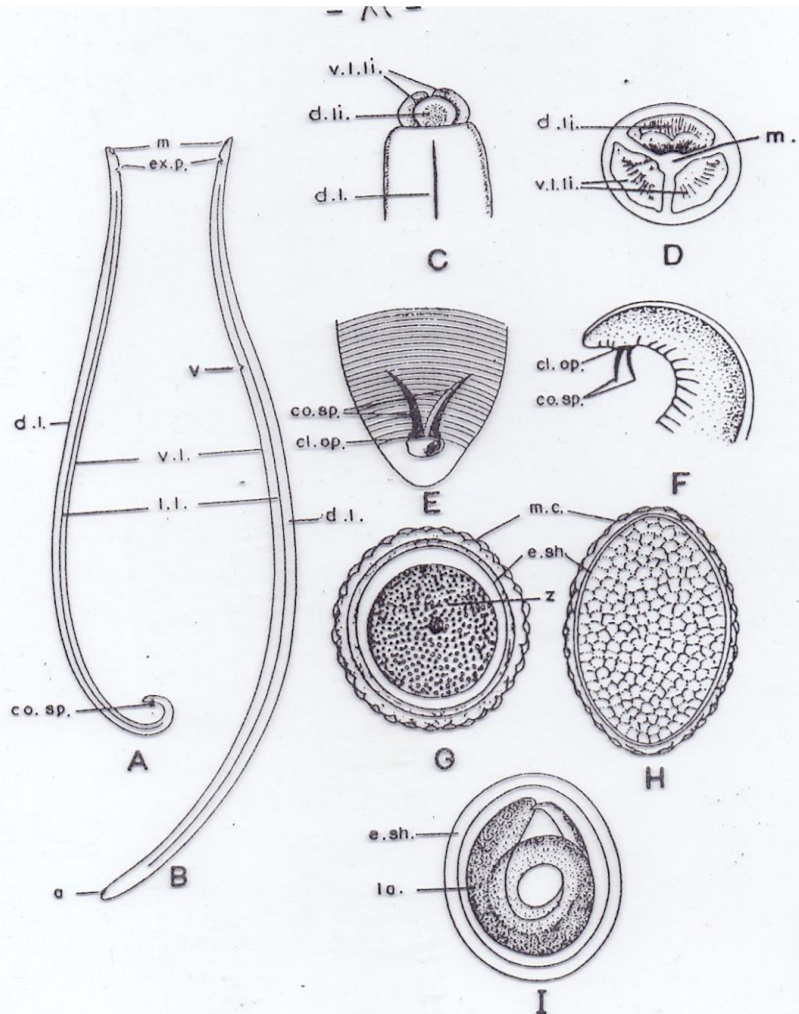
*Dipylidium caninum*: A, adult worm; B, scolex showing rostellum with 4 rows of hooks; C, rose-thorn rostellar hook; D, mature proglottid; E, gravid proglottid; F, egg capsule; G, egg; H, cysticeroid larva.

### 13) *Ascaris lumbricoides*

Phylum : Nematoda

Class: Phasmidia

Family: Ascaridae



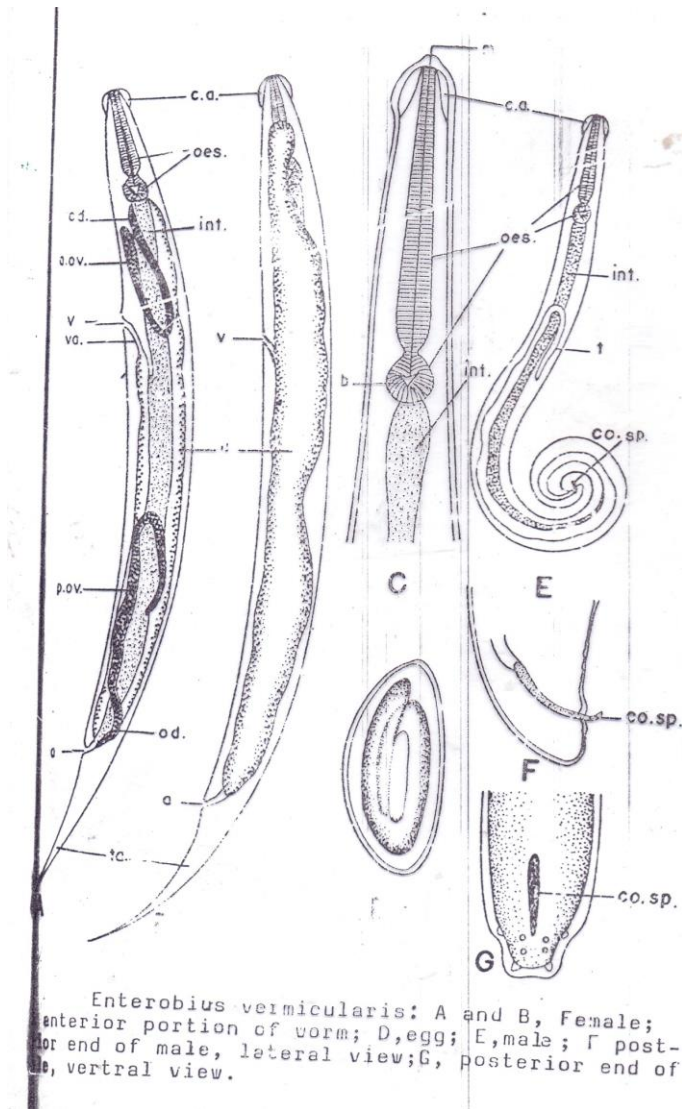
*Ascaris lumbricoides*: A and B, male and female; C, anterior end showing lips, dorsal view; D, lips, front view; E, posterior end of male, ventral view; F, posterior end of male with extended spicules, lateral view; G, Fertilized egg; H, unfertilized egg; I, embryonated egg.

# 14) *Enterobius vermicularis* (pinworm or seat worm)

الدودة الدبوسية

Phylum : Nematode

Family: Oxyuridae

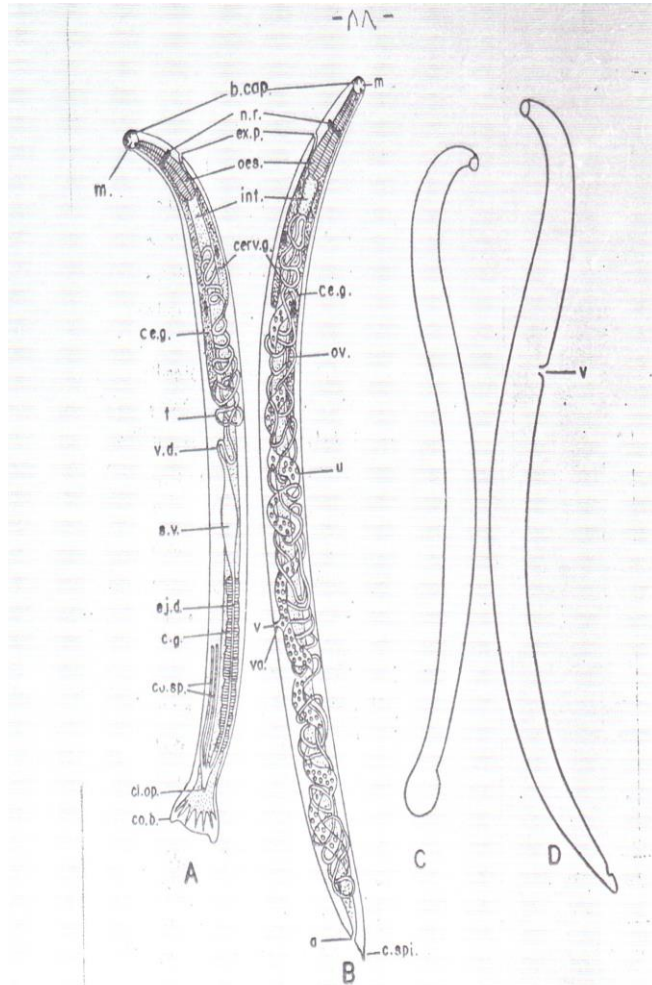


*Enterobius vermicularis*: A and B, Female; anterior portion of worm; D, egg; E, male; F posterior end of male, lateral view; G, posterior end of male, ventral view.



## 15) *Ancylostoma duodenale*

Family: Ancylostomatidae



Hookworms of man: A, male of *Ancylostoma duodenale*; B, ♀ of same; C, male of *Necator americanus*; D, ♀ of same.