



# **Zoology 8**

## **Comparative anatomy**

### **Practical part**

**Second term**

**By**

**1- Dr: Nermean Moamen Hussein**

**(Assistant Professor of Zoology)**

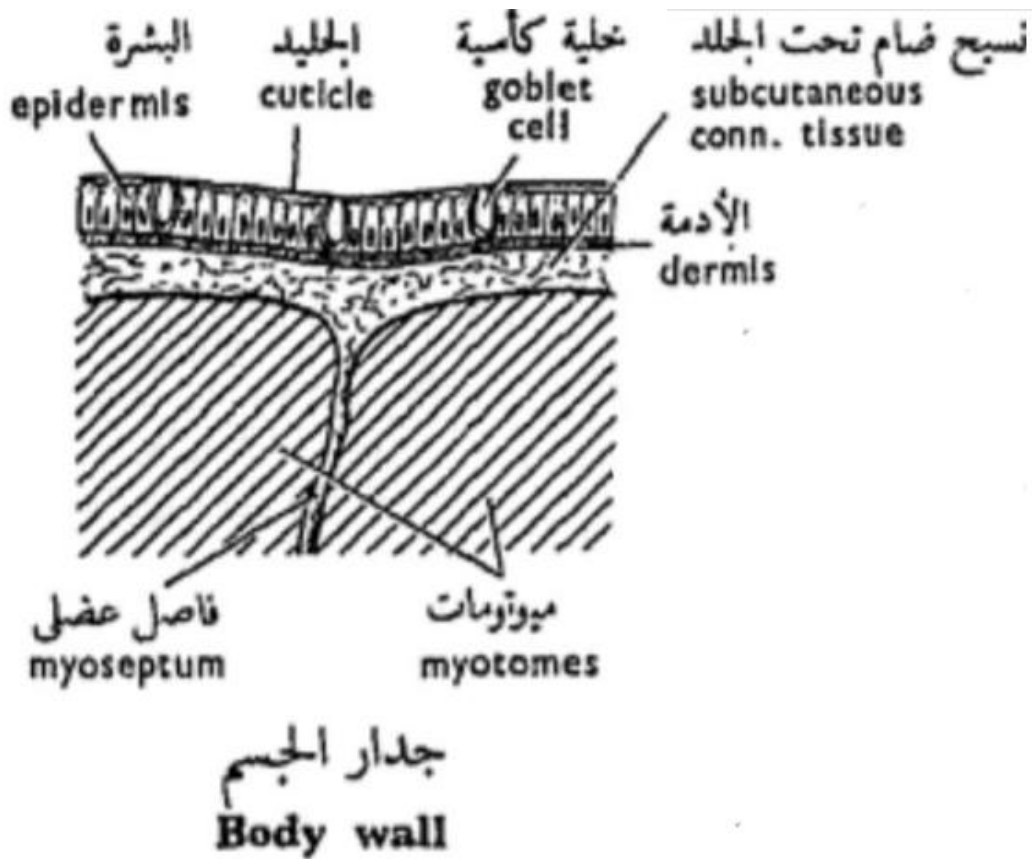
**Faculty of Science**

**Zoology department**

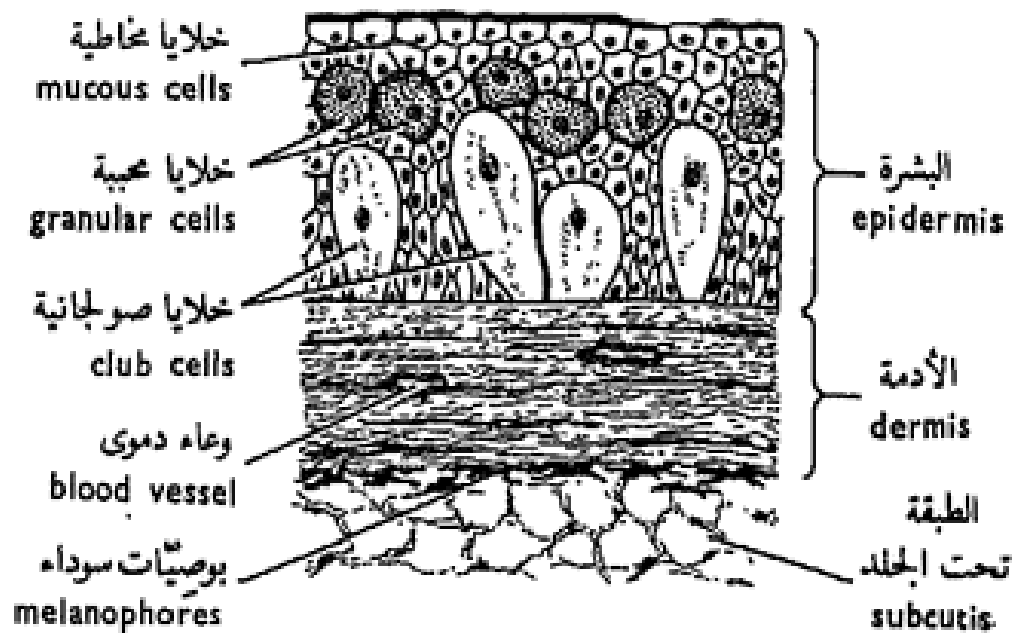
**2022-2023**

# The Book data

---

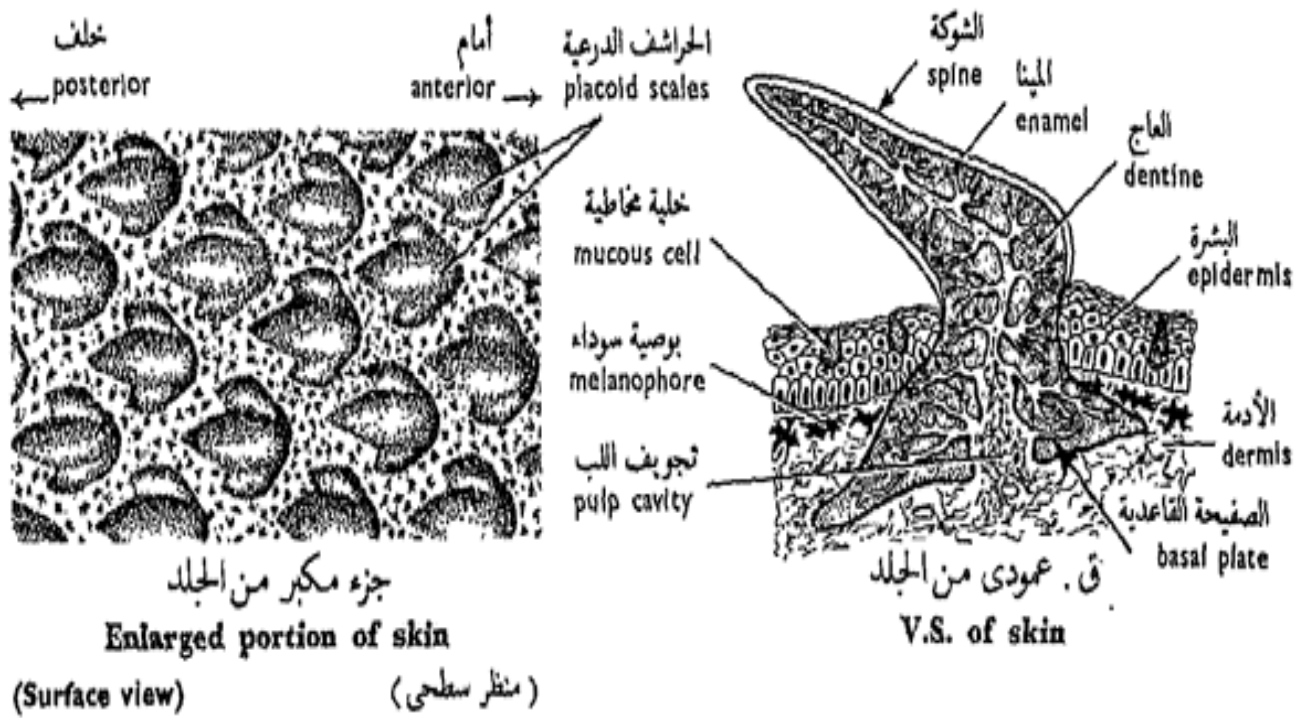


v.s in the of protochordata (*Amphioxus lanceolatus*)

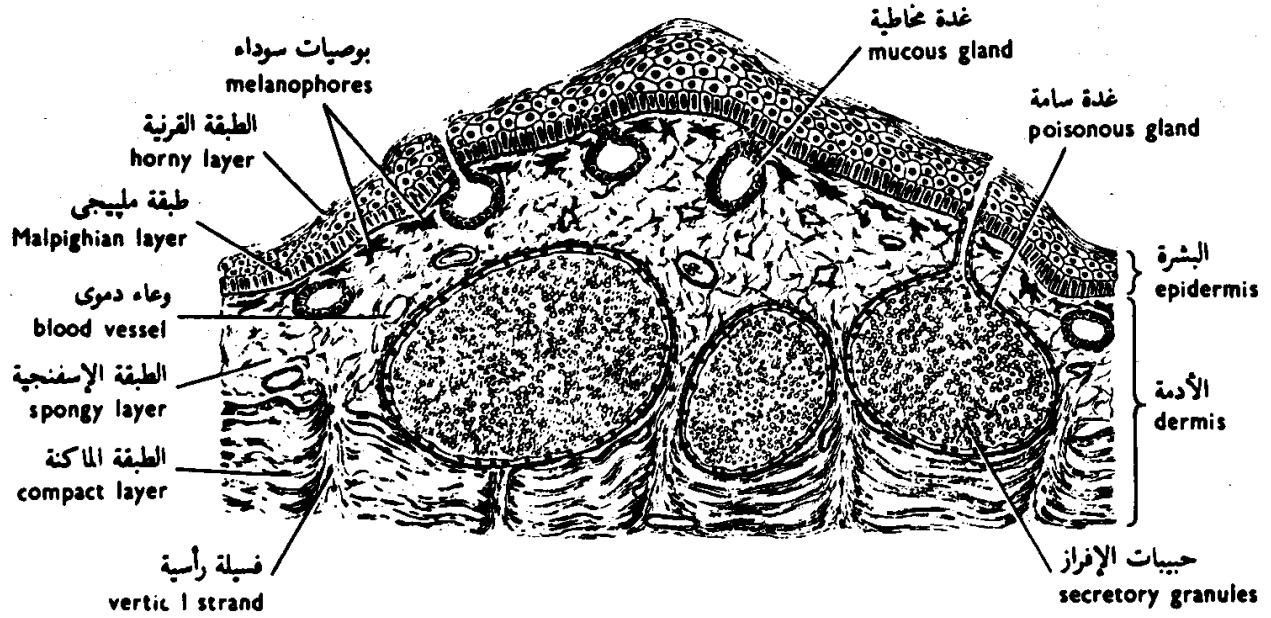


قى . عمودى من الجلد  
 V.S. of skin

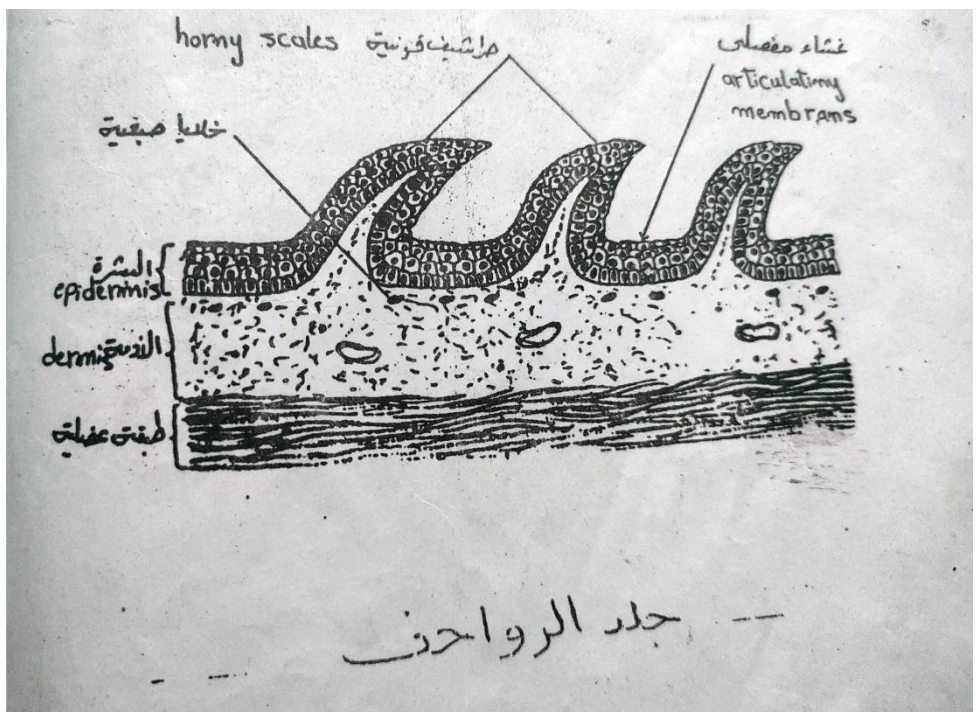
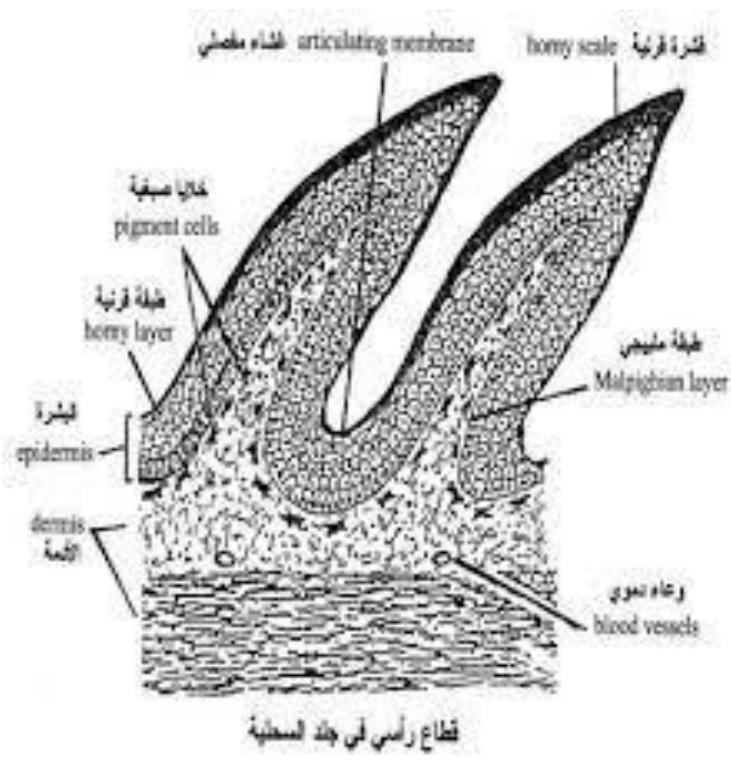
v.s in the skin of cyclostomata (*Petromyzon sp.*)



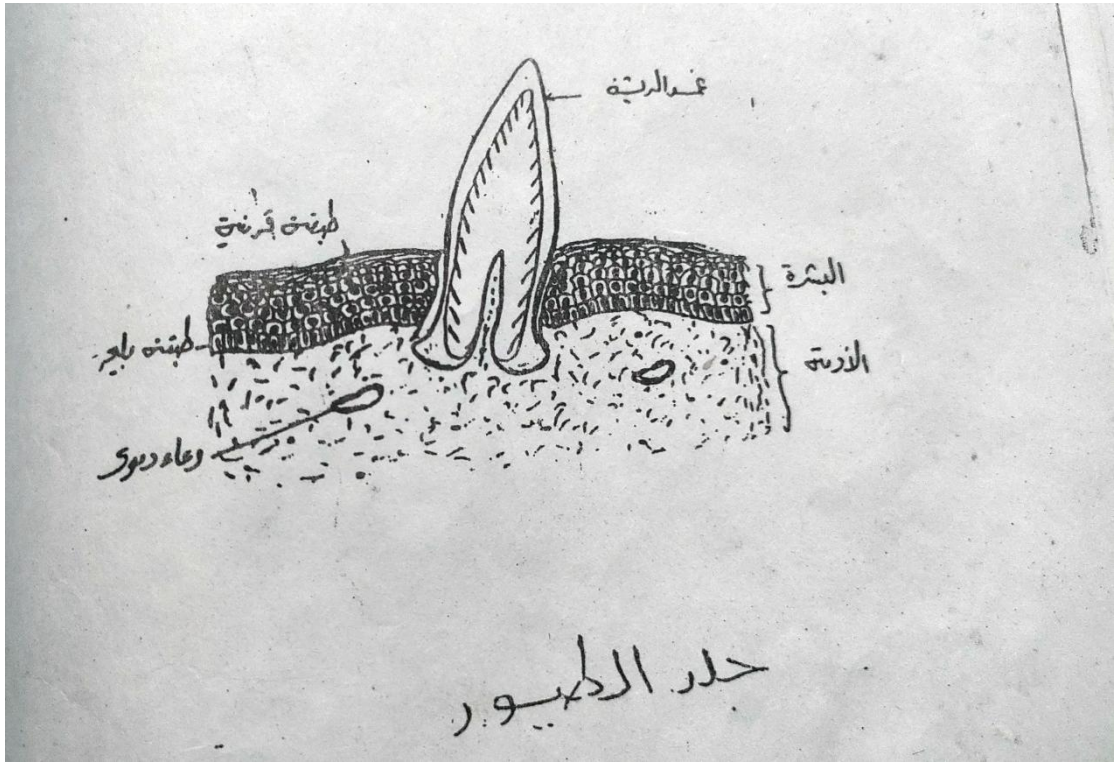
v.s in the skin of dog fish



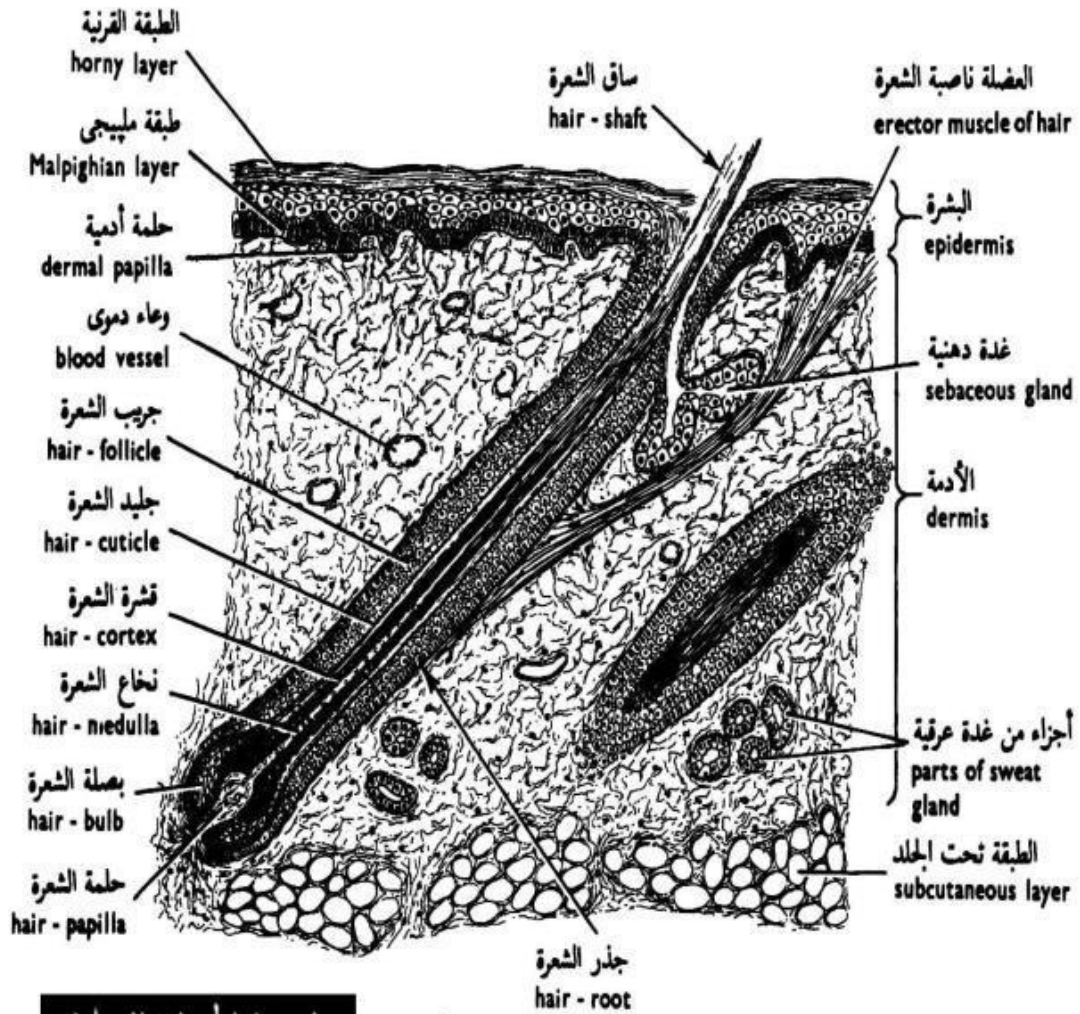
شكل ٥٤ - قطاع رأسي من جلد الضفدعة  
 FIG. 45 - V.S. OF THE SKIN OF THE TOAD



v.s in the skin of Reptilia



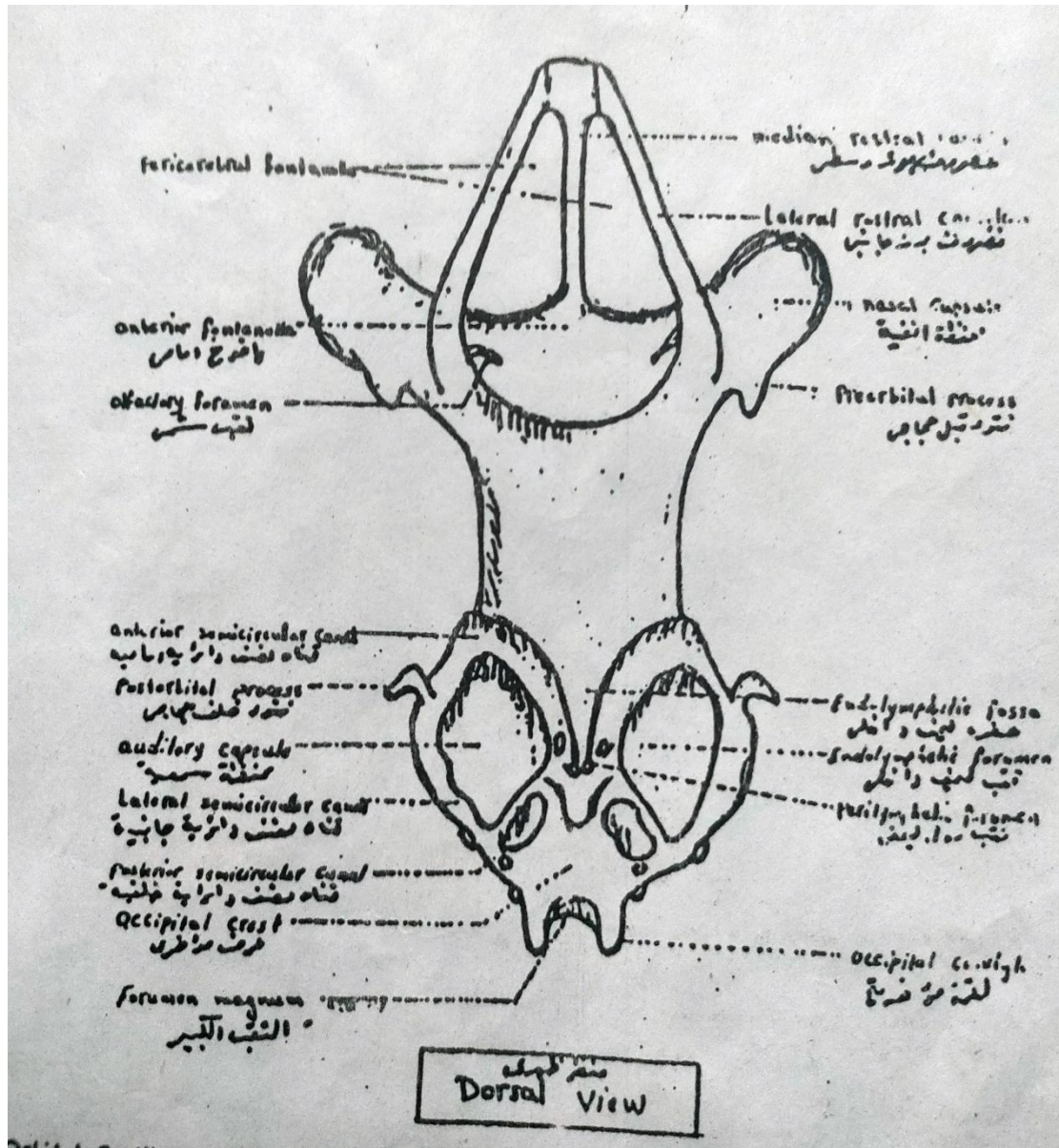
v.s in the skin of Aves



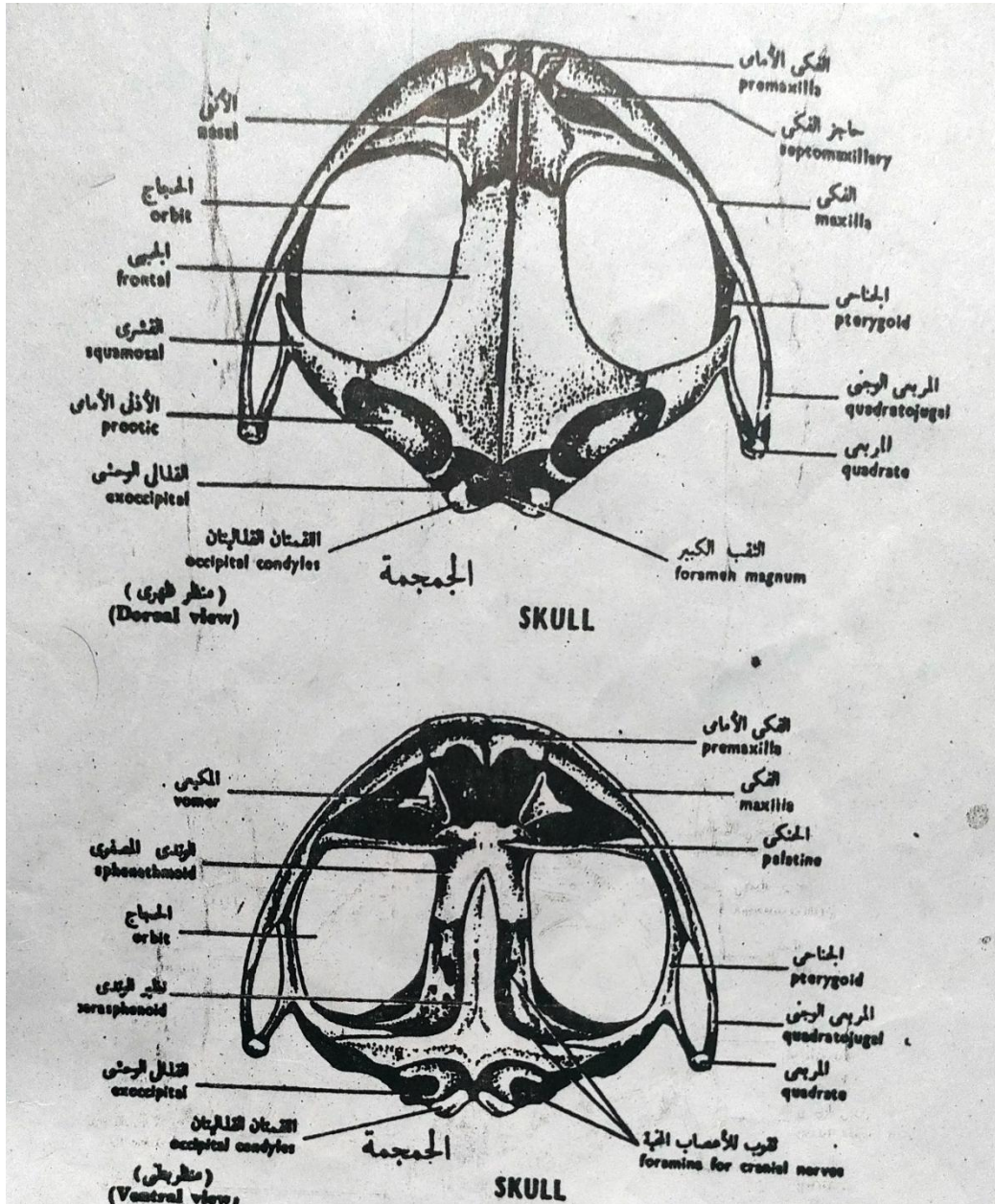
بيولوجية الحيوان العملية  
 قطاع رأسي من جلد الخنزير

v.s in the skin of Mammalia

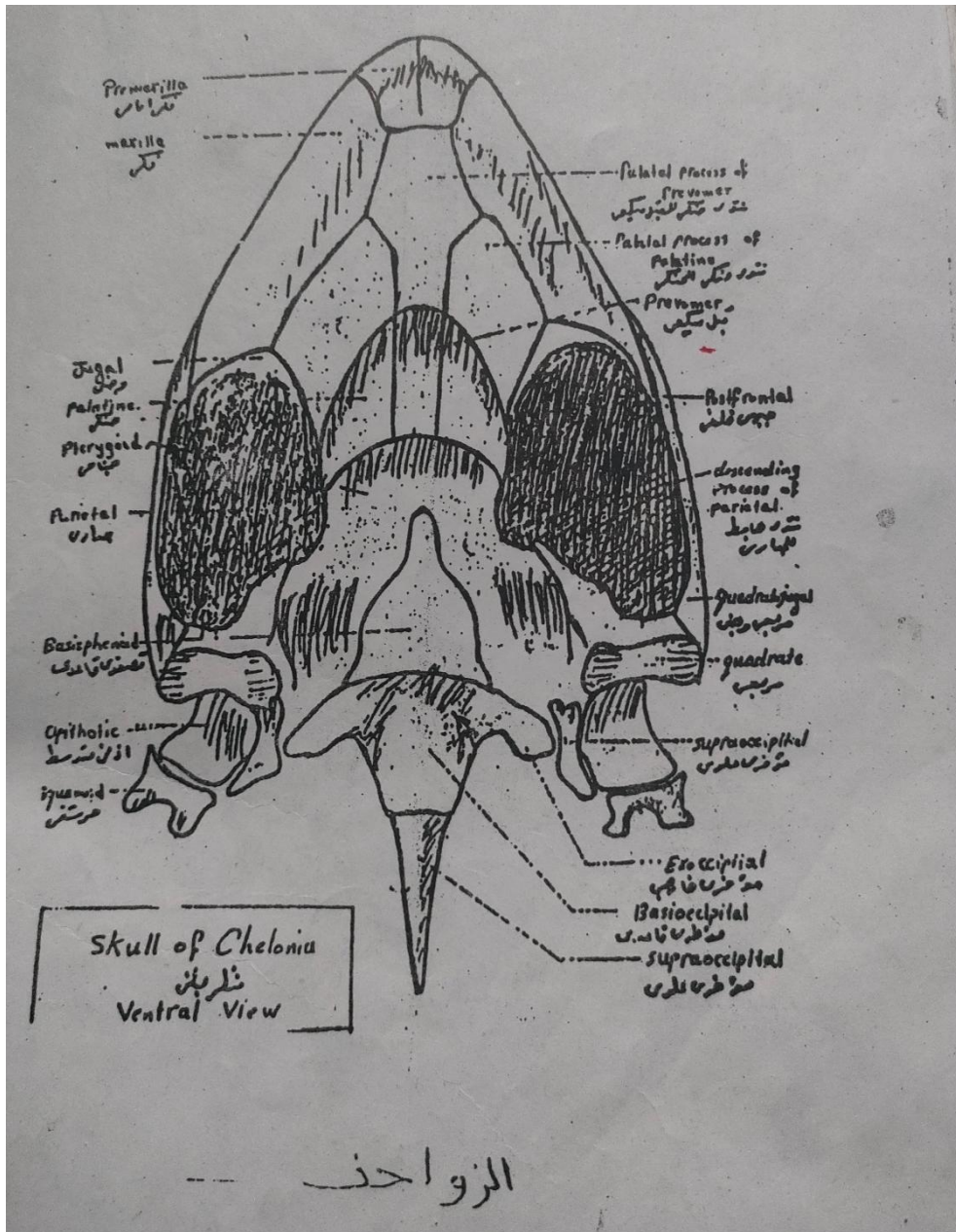




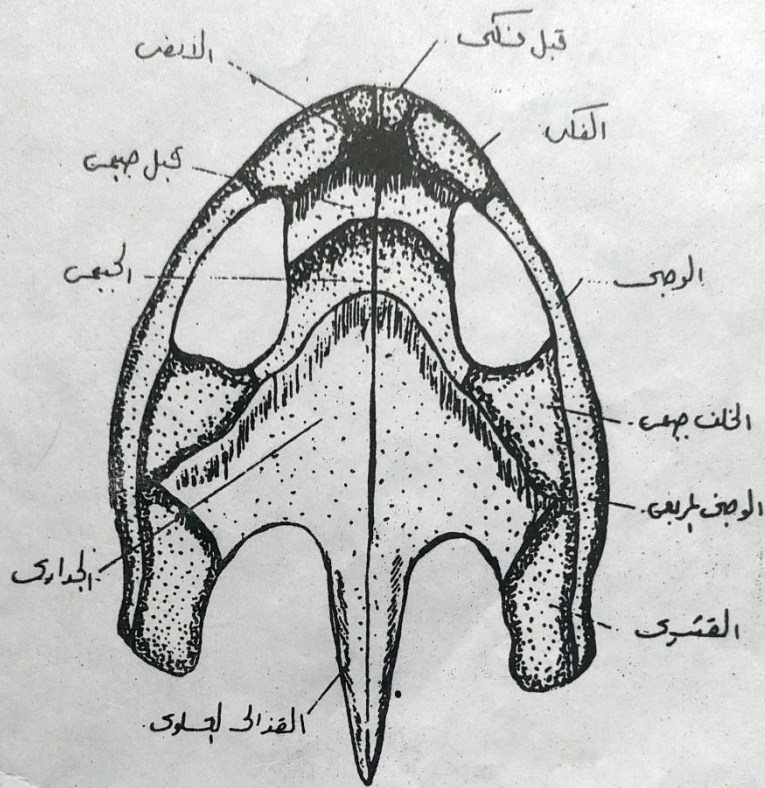
Dorsal view of dog fish skull



The skull of Toad



Ventral view of Chelonia skull

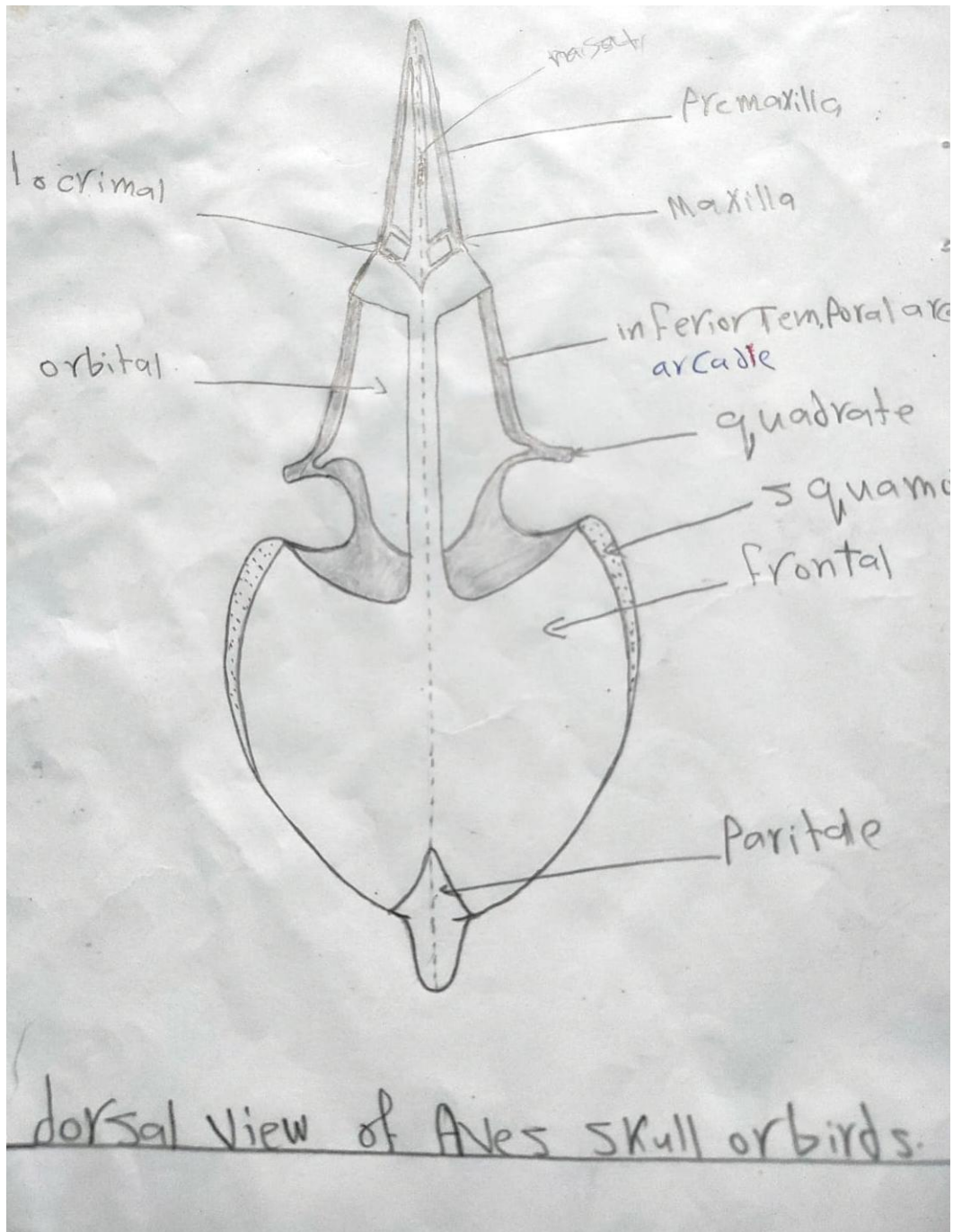


منظر ظهري  
Dorsal view

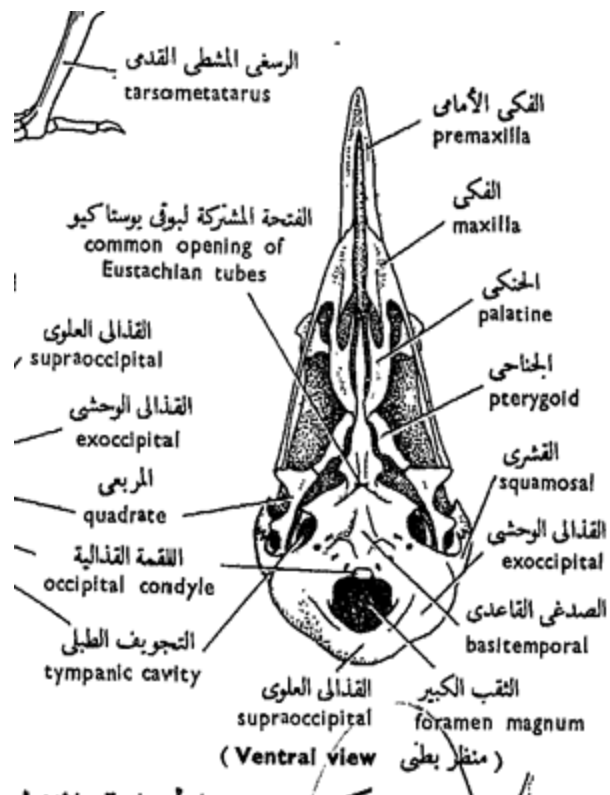
الزواحف

Dorsal view of Chelonia skull

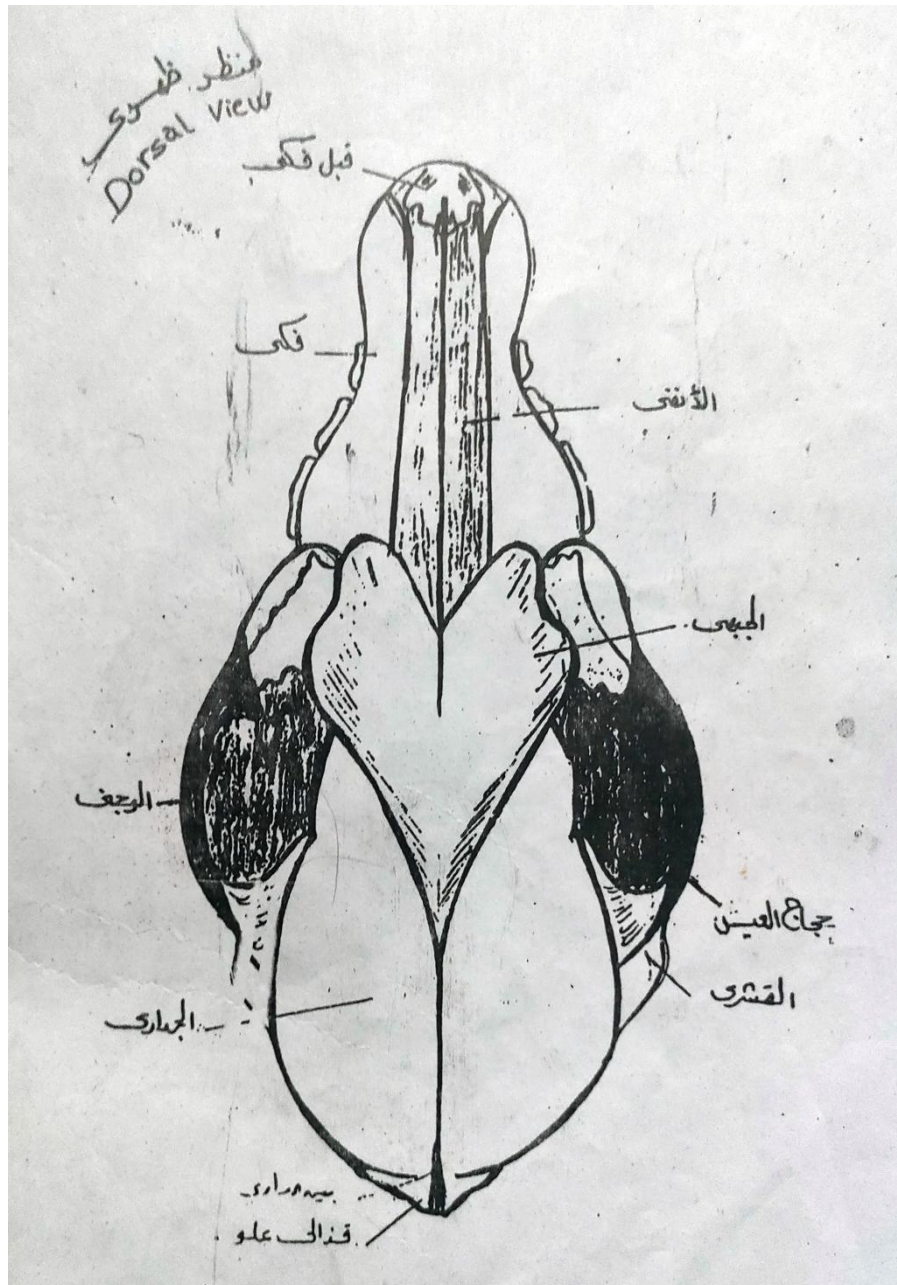




**Dorsal view of Aves skull**

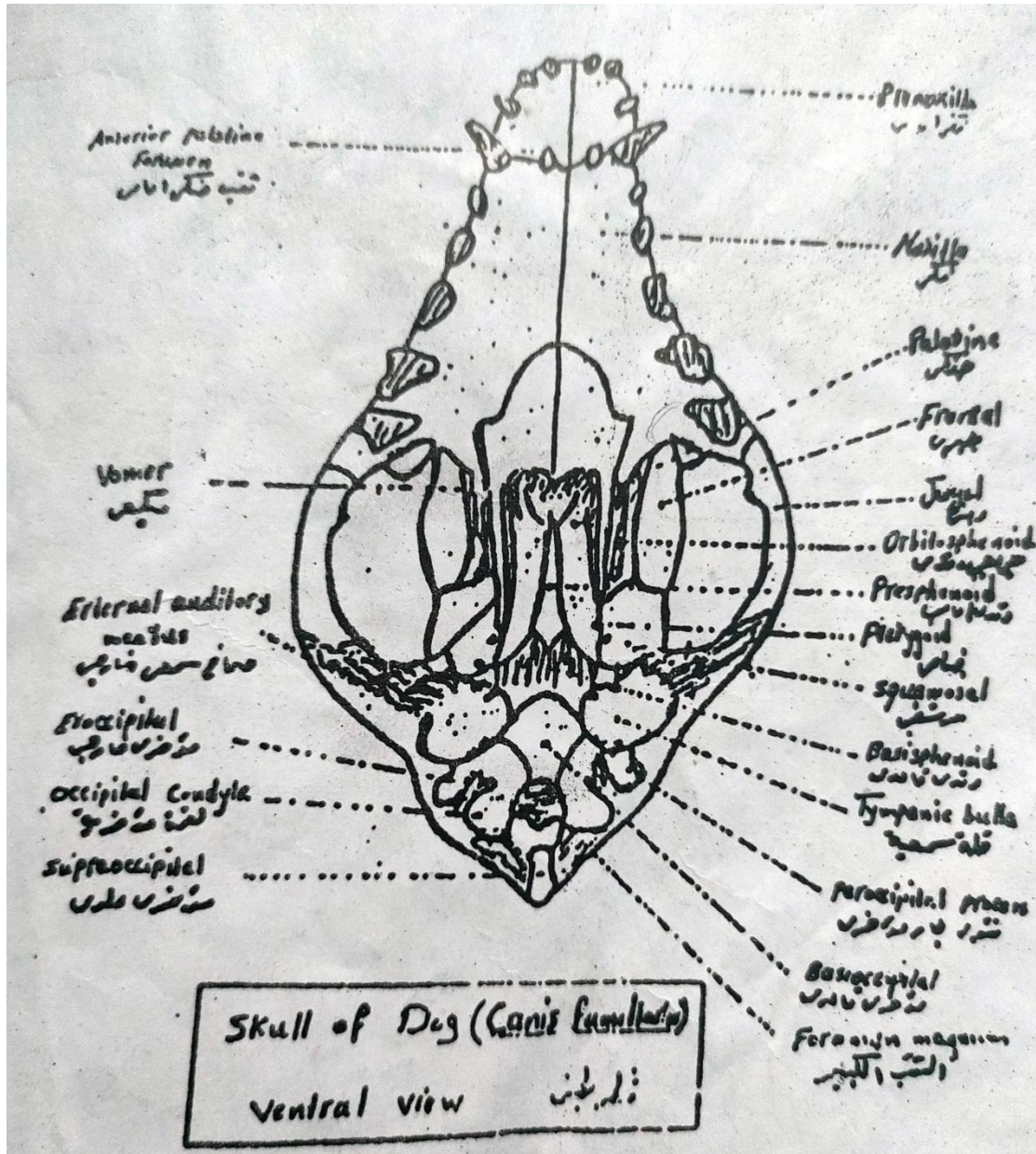


**Ventral view of Aves skull**

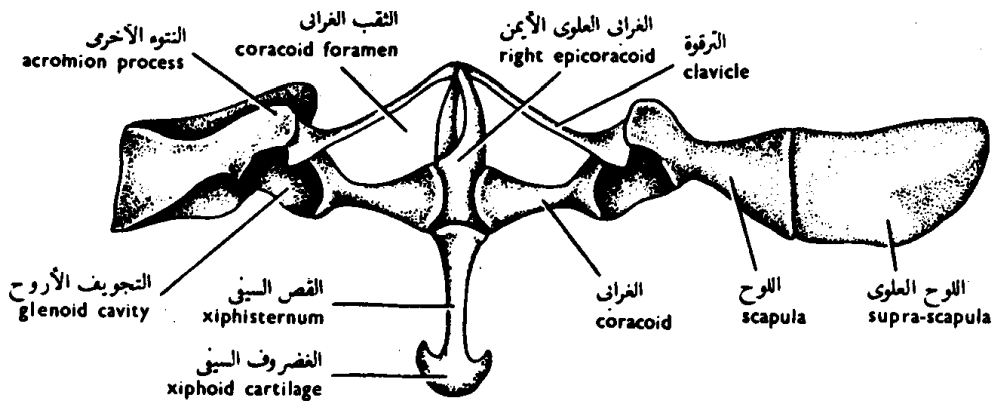


**Dorsal view of Dog skull (Mammalia)**



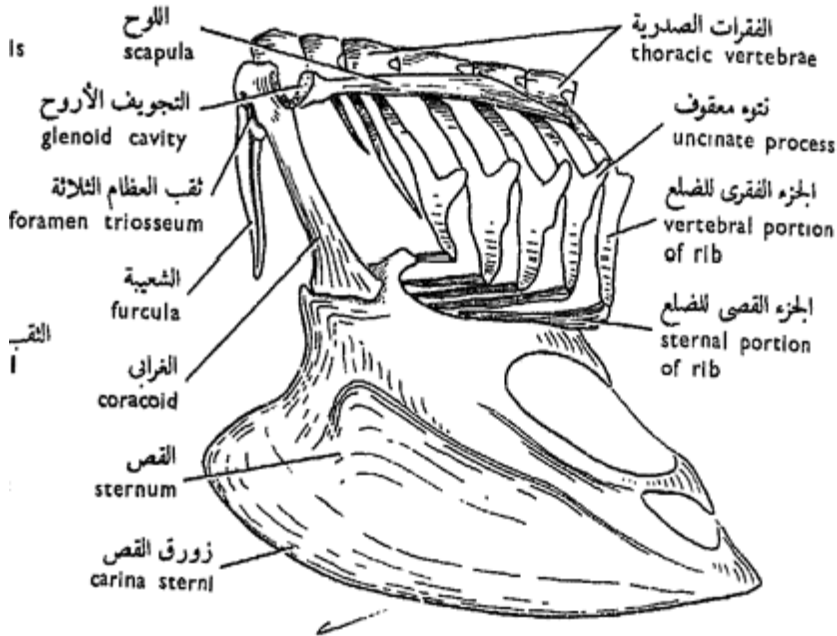


Ventral view of Dog skull (Mammalia)



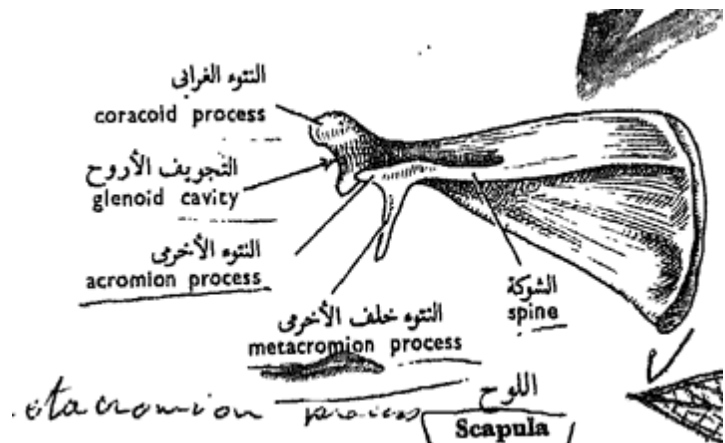
شكل ٣٣ - الحزام الصدري والقص.  
**FIG. 33 - PECTORAL GIRDLE AND STERNUM**

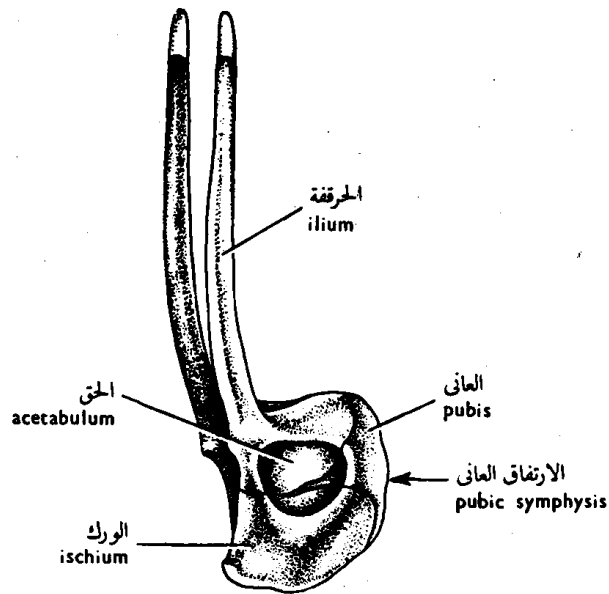
Toad



Skeleton of  
 thorax in Aves

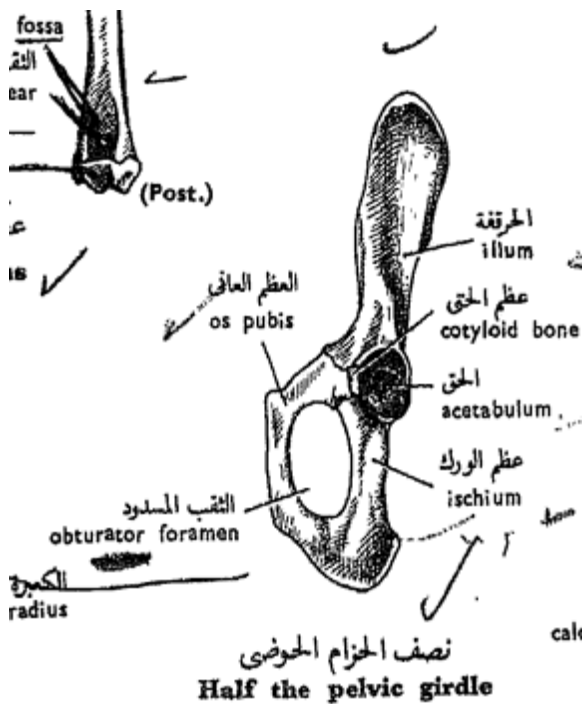
Scapula in Mammalia





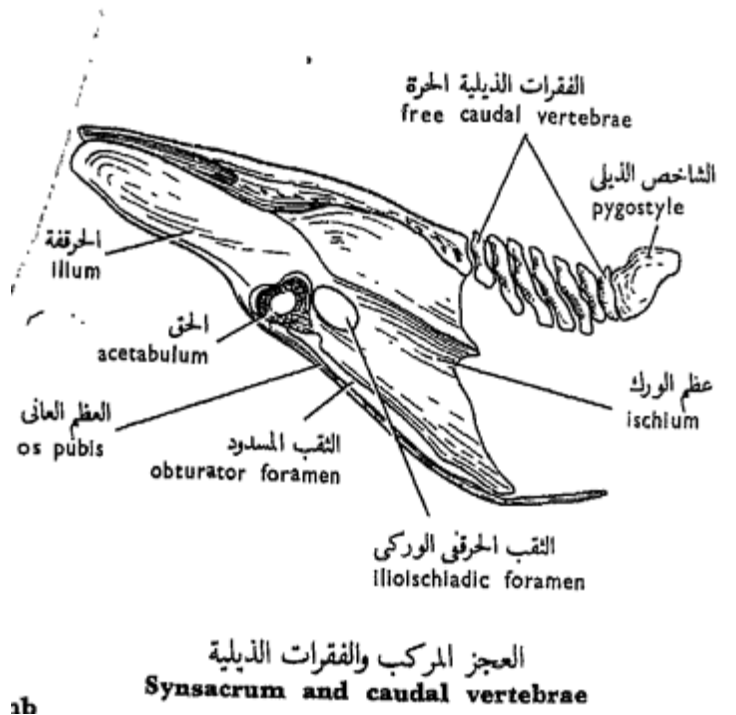
شكل ٣٥ - الحزام الحوضي  
**FIG. 35 - PELVIC GIRDLE**

**Toad**



نصف الحزام الحوضي  
**Half the pelvic girdle**

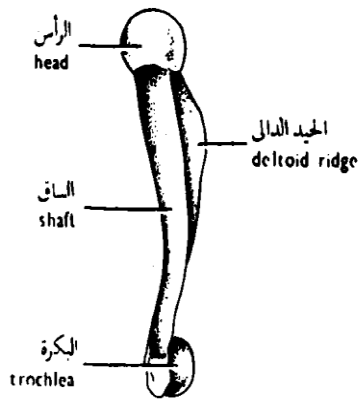
من القدم العنقدة



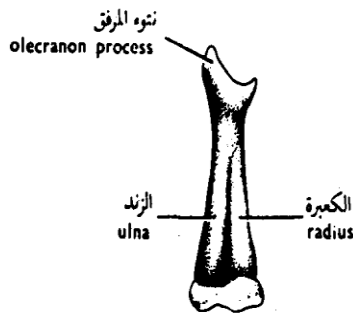
العجز المركب والفقرات الذيلية  
**Synsacrum and caudal vertebrae**

**Aves**

**Mammalia**

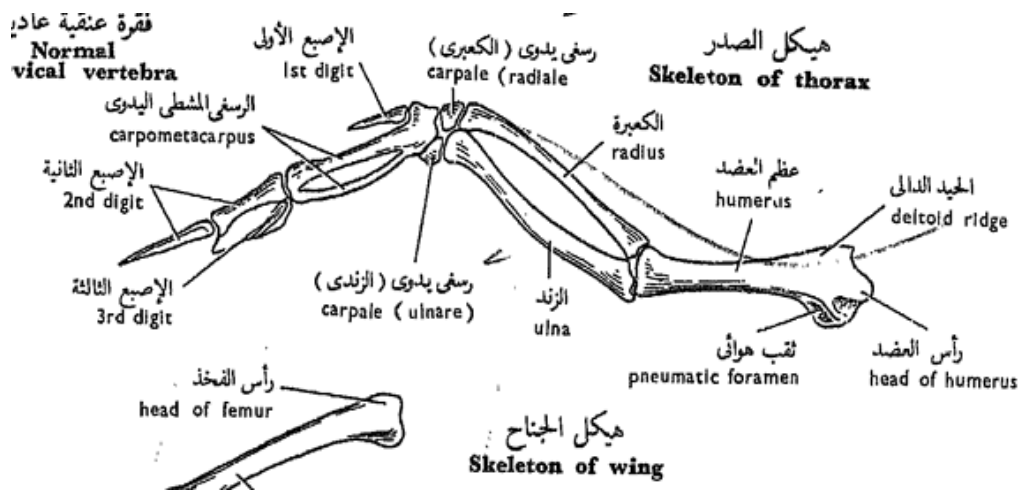


عظم العضد  
HUMERUS



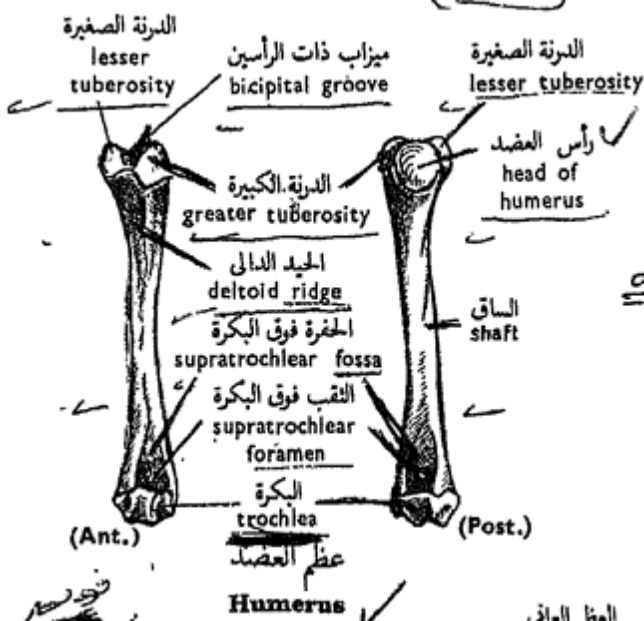
الكعبرى الزندى  
RADIO-ULNA

شكل ٣٤ - عظام الطرف الأمامى  
FIG. 34 - BONES OF FORE-LIMB

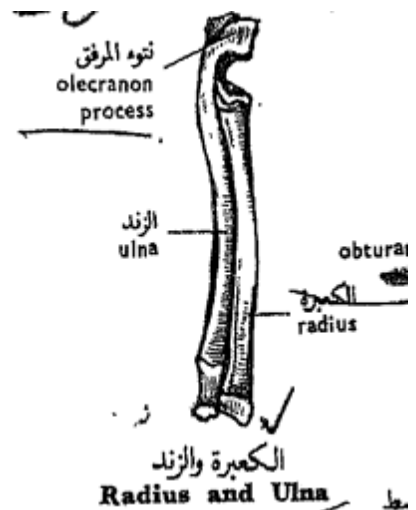


هيكل الصدر  
Skeleton of thorax

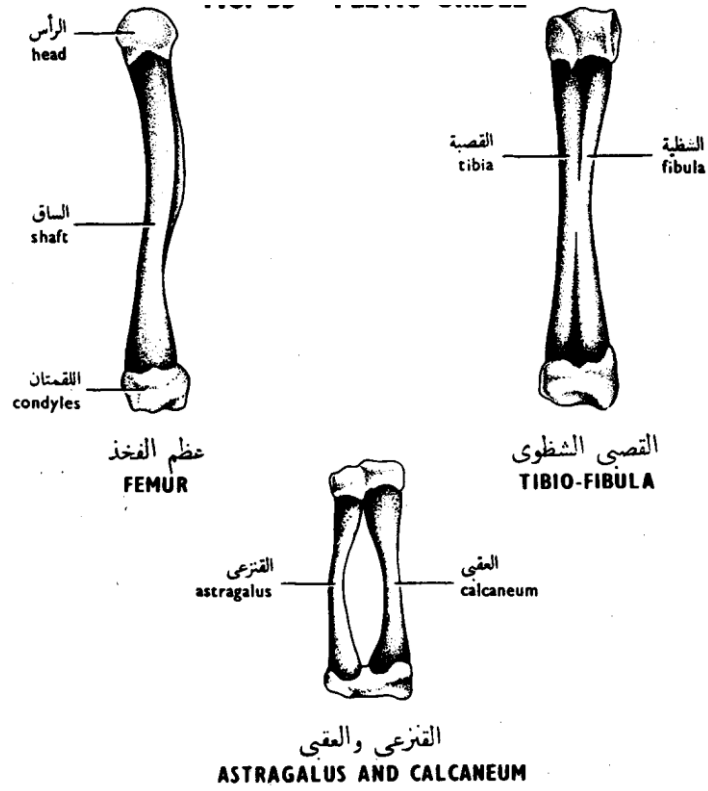
هيكل الجناح  
Skeleton of wing



عظم العضد  
Humerus



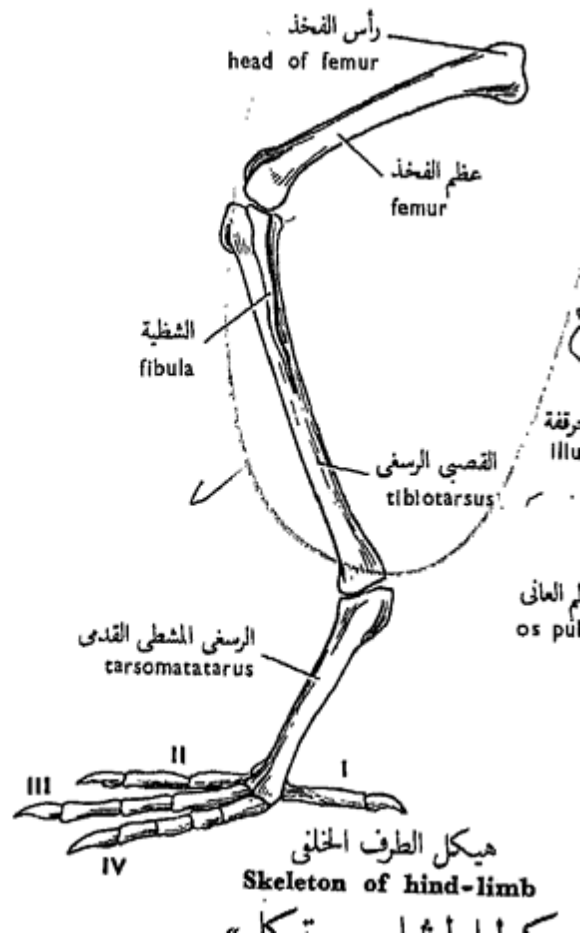
الكعبرة والزند  
Radius and Ulna



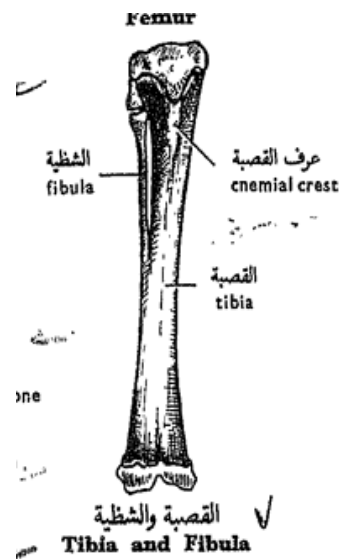
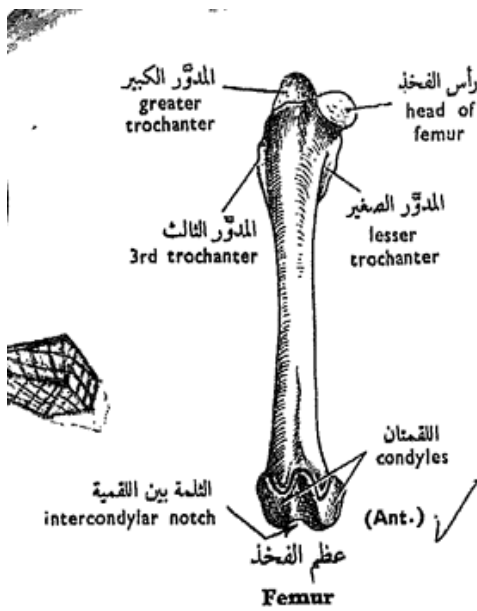
شكل ٣٦ - عظام الطرف الخلفى  
**FIG. 36 - BONES OF HIND-LIMB**

## Toad

# Aves



# Bones of hind -limb in mammalia



## References

- كتاب بيولوجيا الحيوان العملية
- مذكرة تشريح تجمع رسومات الدروس العملية مجهزة من قبل قسم علم الحيوان