

Fundamentals of

Database Systems

5th Edition

Elmasri / Navathe

Chapter 3

Data Modeling Using the Entity-Relationship (ER) Model



5th Edition

Elmasri / Navathe

Chapter Outline

- ER Model Concepts
 - Entities and Attributes
 - Entity Types, Value Sets, and Key Attributes
 - Relationships and Relationship Types
 - Weak Entity Types
 - Roles and Attributes in Relationship Types
- ER Diagrams - Notation
- ER Diagram for COMPANY Schema
- Alternative Notations – UML class diagrams, others

Overview of Database Design Process

- Two main activities:
 - Database design
 - Applications design
- Focus in this chapter on database design
 - To design the conceptual schema for a database application
- Applications design focuses on the programs and interfaces that access the database
 - Generally considered part of software engineering

Overview of Database Design Process

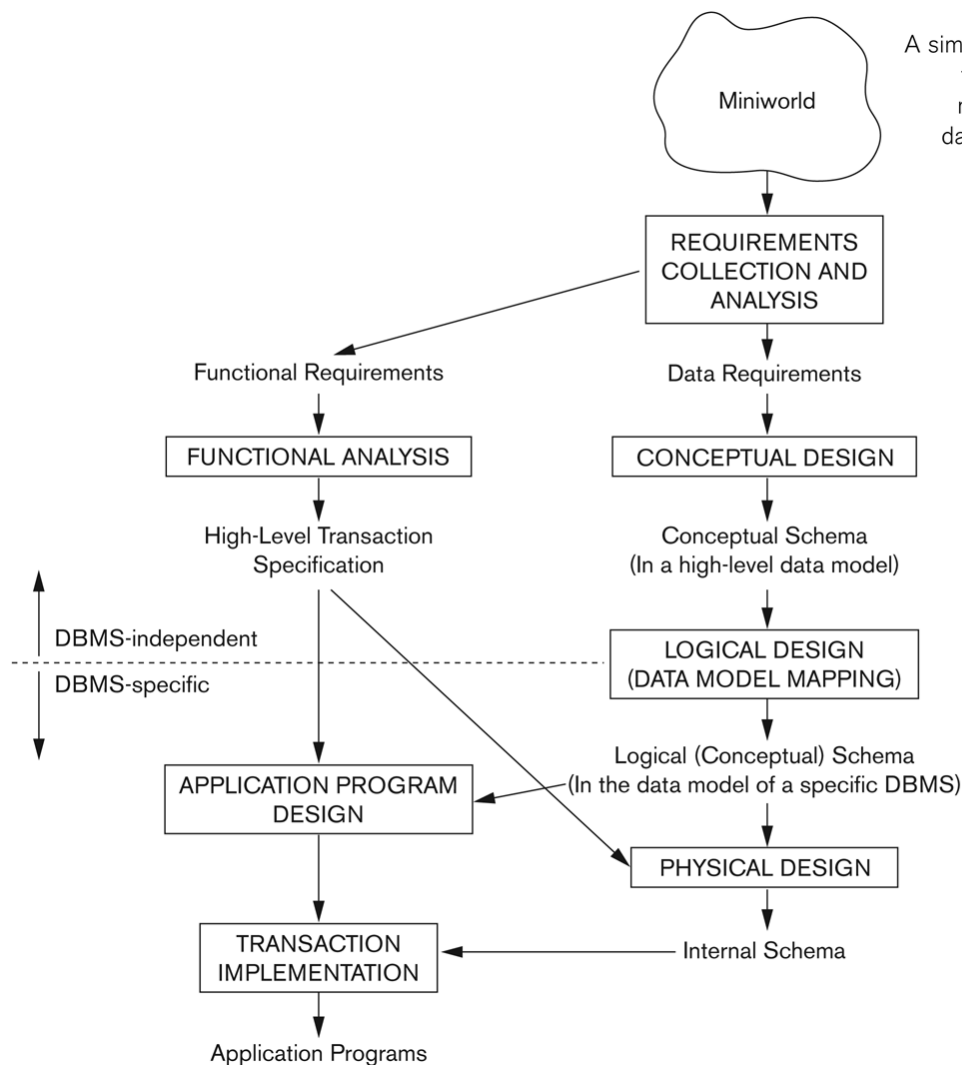


Figure 3.1

A simplified diagram to illustrate the main phases of database design.

Example COMPANY Database

- We need to create a database schema design based on the following (simplified) **requirements** of the COMPANY Database:
 - The company is organized into DEPARTMENTS. Each department has a name, number and an employee who *manages* the department. We keep track of the start date of the department manager. A department may have several locations.
 - Each department *controls* a number of PROJECTS. Each project has a unique name, unique number and is located at a single location.

Example COMPANY Database (Contd.)

- We store each EMPLOYEE's social security number, address, salary, sex, and birthdate.
 - Each employee *works for* one department but may *work on* several projects.
 - We keep track of the number of hours per week that an employee currently works on each project.
 - We also keep track of the *direct supervisor* of each employee.
- Each employee may *have* a number of DEPENDENTS.
 - For each dependent, we keep track of their name, sex, birthdate, and relationship to the employee.

ER Model Concepts

■ Entities and Attributes

- Entities are specific persons, places, objects or things in the user environment about which the user needs to keep data
- For example the EMPLOYEE , office , Task , conference.
- Attributes are properties used to describe an entity.
 - For example an EMPLOYEE entity may have the attributes Name, SSN, Address, Sex, BirthDate

Attribute

هي الخصائص او
البيانات التي يتم تخزينها
عن كل Entity

Entity

هو اى شخص او مكان او حدث
او شيء يهتم المستخدم بحف
بياناته في قاعدة البيانات

- A specific entity will have a value for each of its attributes.
 - For example a specific employee entity may have Name='John Smith', SSN='123456789', Address ='731, Fondren, Houston, TX', Sex='M', BirthDate='09-JAN-55'
- Each attribute has a *value set* (or data type) associated with it – e.g. integer, string, subrange, enumerated type, ...

■ Relationships:-

A relationship relates two or more distinct entities with a specific meaning.

- For example: EMPLOYEE Ali works on the ProductX project or

- EMPLOYEE Mohamed manages the Research DEPARTMENT

Types of Attributes (1)

■ Simple

- Each entity has a single atomic value for the attribute. For example, SSN or Sex.

■ Composite

- The attribute may be composed of several components. For example:
 - Address(Apt#, House#, Street, City, State, ZipCode, Country), or
 - Name(FirstName, MiddleName, LastName).
 - Composition may form a hierarchy where some components are themselves composite.

■ Multi-valued

- An entity may have multiple values for that attribute. For example, Color of a CAR or PreviousDegrees of a STUDENT.
 - Denoted as {Color} or {PreviousDegrees}.

- attributes

simple ----- قيمة واحدة مجردة لا يمكن تقسيمها

مثال sex , SNN

Composite ----- بيان بيتكون من عدة بيانات أخرى

■ Attribute

single valued----- لا يحتتمل سوى قيمة واحدة
sex=male , ssn=1234

multivalued----- يحتتمل اكثر من قيمة
Car{black , white}
Qualifications{Bsc, Msc, Phd}

- Attribute

stored ----- نطلب قيمته من المستخدم

Ex: salary - Birthdate

derived----- لا نطلب من المستخدم

Age

netsalary

- Complex attribute

Multivalued+composite

Composite:-----Phone (country code , code gov, phone)

mulivalued ممكن يكون للشخص اكثر من رقم تليفونة

Key attribute

- هو attribute التي لا تتكرر قيمتها مثل ssn
- مثل student له رقم جامعي (لا يتكرر)

- ممكن يكون ل entity الواحد له اثنان keys

- يمكن ان يكون entity بدون key attribute ويسمى Weal entity ويكون وجوده مرتبط بوجود entity اخر ويعبر عنه في الرسم بمستطيل بحدود مزدوجه

Types of Attributes (2)

- In general, composite and multi-valued attributes may be nested arbitrarily to any number of levels, although this is rare.
 - For example, PreviousDegrees of a STUDENT is a composite multi-valued attribute denoted by {PreviousDegrees (College, Year, Degree, Field)}
 - Multiple PreviousDegrees values can exist
 - Each has four subcomponent attributes:
 - College, Year, Degree, Field

Example of a composite attribute

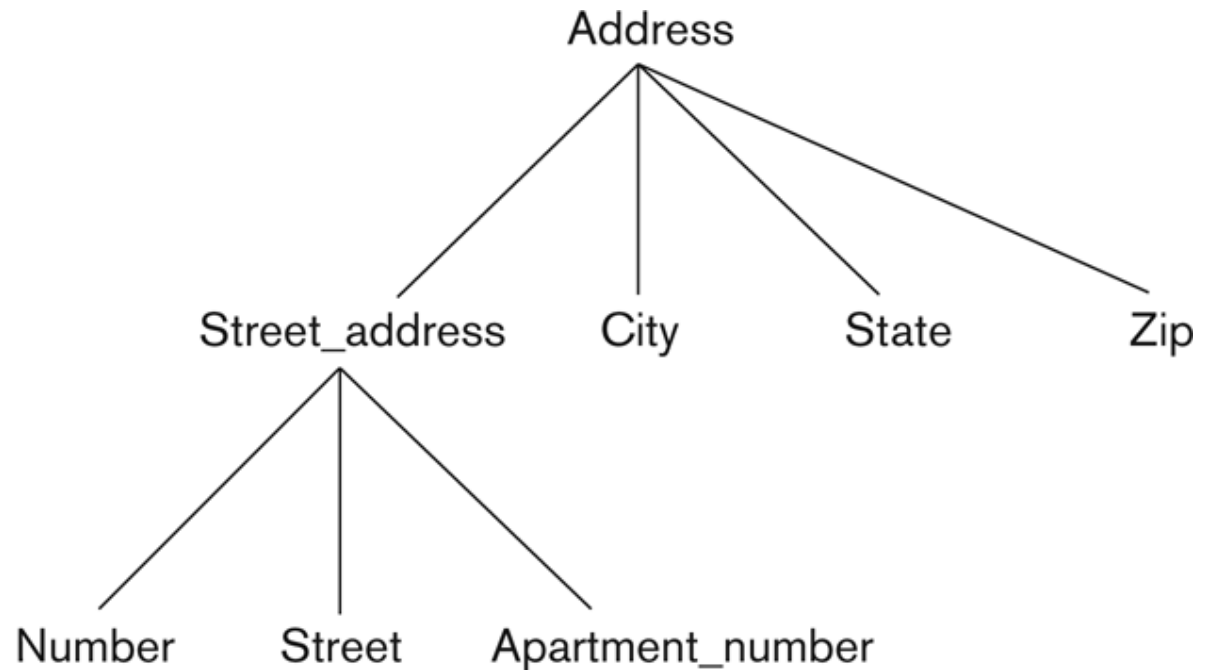


Figure 3.4

A hierarchy of composite attributes.

Entity Types and Key Attributes (1)

- Entities with the same basic attributes are grouped or typed into an entity type.
 - For example, the entity type EMPLOYEE and PROJECT.
- An attribute of an entity type for which each entity must have a unique value is called a key attribute of the entity type.
 - For example, SSN of EMPLOYEE.

Entity Types and Key Attributes (2)

- A key attribute may be composite.
 - VehicleTagNumber is a key of the CAR entity type with components (Number, State).
- An entity type may have more than one key.
 - The CAR entity type may have two keys:
 - VehicleIdentificationNumber (popularly called VIN)
 - VehicleTagNumber (Number, State), aka license plate number.
- Each key is underlined

Displaying an Entity type

- In ER diagrams, an entity type is displayed in a rectangular box
- Attributes are displayed in ovals
 - Each attribute is connected to its entity type
 - Components of a composite attribute are connected to the oval representing the composite attribute
 - Each key attribute is underlined
 - Multivalued attributes displayed in double ovals
- See CAR example on next slide

Entity Type CAR with two keys and a corresponding Entity Set

(a)

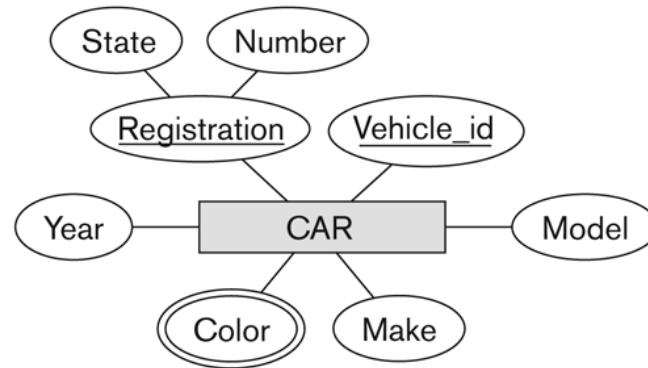


Figure 3.7

The CAR entity type with two key attributes, Registration and Vehicle_id. (a) ER diagram notation. (b) Entity set with three entities.

(b)

CAR
Registration (Number, State), Vehicle_id, Make, Model, Year, {Color}

CAR₁
((ABC 123, TEXAS), TK629, Ford Mustang, convertible, 2004 {red, black})

CAR₂
((ABC 123, NEW YORK), WP9872, Nissan Maxima, 4-door, 2005, {blue})

CAR₃
((VSY 720, TEXAS), TD729, Chrysler LeBaron, 4-door, 2002, {white, blue})

⋮

Entity Set

- Each entity type will have a collection of entities stored in the database
 - Called the **entity set**
- Previous slide shows three CAR entity instances in the entity set for CAR
- Same name (CAR) used to refer to both the entity type and the entity set
- Entity set is the current *state* of the entities of that type that are stored in the database

Initial Design of Entity Types for the COMPANY Database Schema

- Based on the requirements, we can identify four initial entity types in the COMPANY database:
 - DEPARTMENT
 - PROJECT
 - EMPLOYEE
 - DEPENDENT
- Their initial design is shown on the following slide
- The initial attributes shown are derived from the requirements description

Initial Design of Entity Types: EMPLOYEE, DEPARTMENT, PROJECT, DEPENDENT

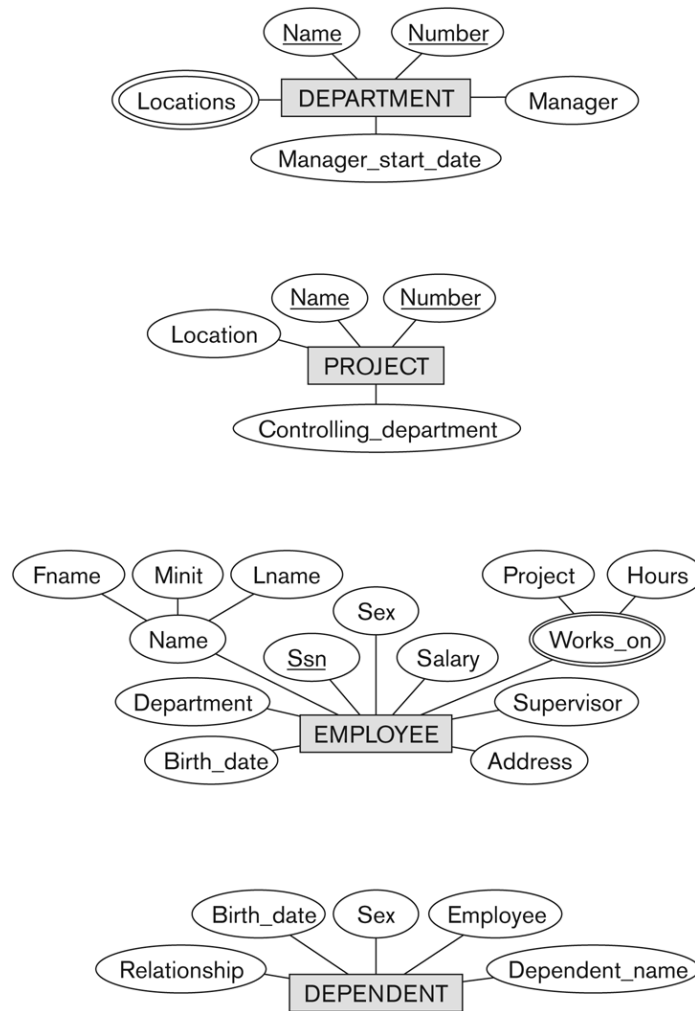


Figure 3.8
Preliminary design of entity types for the COMPANY database. Some of the shown attributes will be refined into relationships.

Refining the initial design by introducing **relationships**

- The initial design is typically not complete
- Some aspects in the requirements will be represented as **relationships**
- ER model has three main concepts:
 - Entities (and their entity types and entity sets)
 - Attributes (simple, composite, multivalued)
 - Relationships (and their relationship types and relationship sets)
- We introduce relationship concepts next

Relationships and Relationship Types (1)

- A **relationship** relates two or more distinct entities with a specific meaning.
 - For example, EMPLOYEE John Smith *works on* the ProductX PROJECT, or EMPLOYEE Franklin Wong *manages* the Research DEPARTMENT.
- Relationships of the same type are grouped or typed into a **relationship type**.
 - For example, the WORKS_ON relationship type in which EMPLOYEES and PROJECTs participate, or the MANAGES relationship type in which EMPLOYEES and DEPARTMENTs participate.
- The degree of a relationship type is the number of participating entity types.
 - Both MANAGES and WORKS_ON are *binary* relationships.

- الموف يعمل في قسم

- الموظف يدير القسم

- Degree:

Binary relationship----- two entity علاقة بين

Recursive relationship ----- entity على نفسه علاقة من

Ternary relationship----- تكون رابطة بين ثلاثة

Relationship instances of the WORKS_FOR N:1 relationship between EMPLOYEE and DEPARTMENT

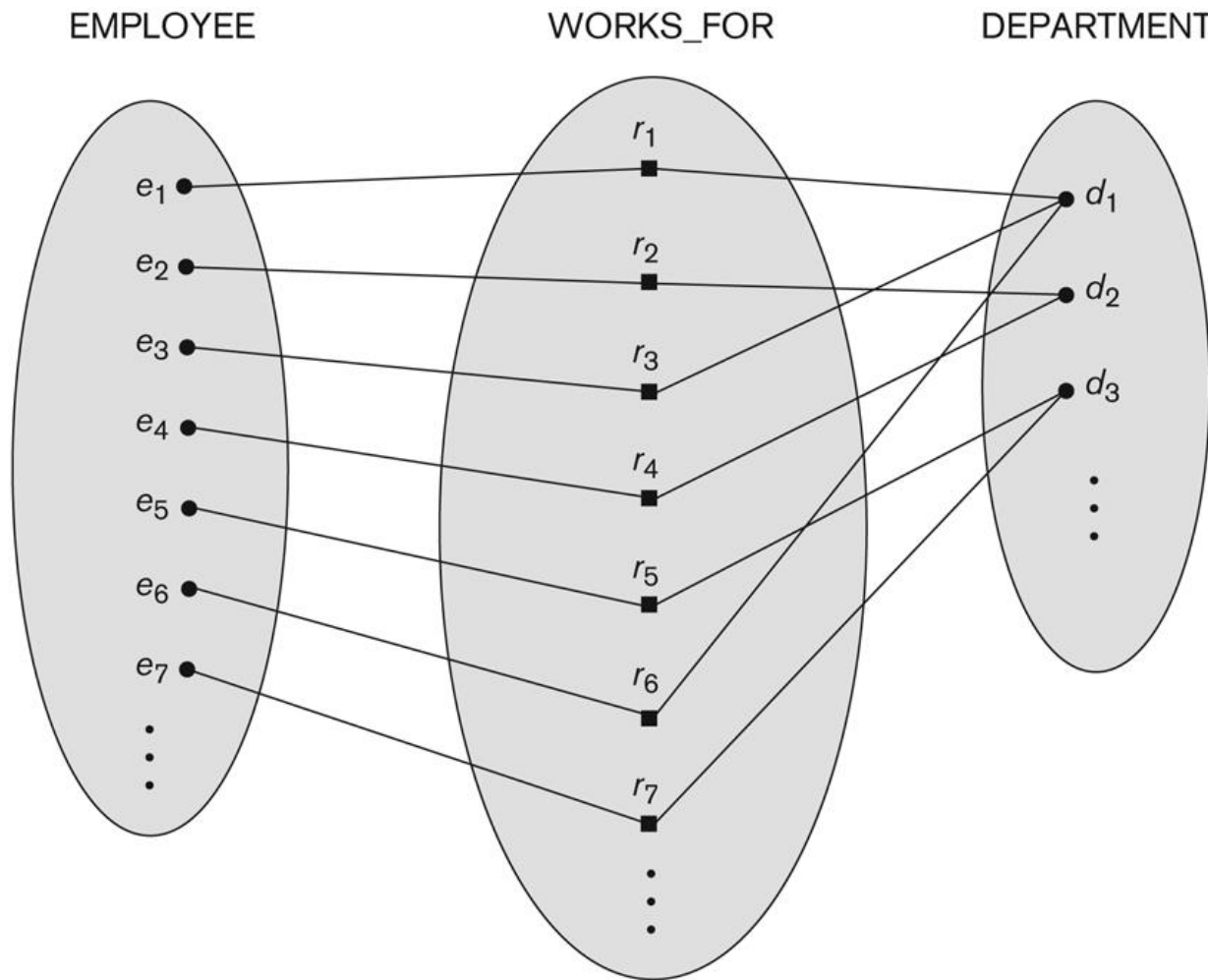


Figure 3.9

Some instances in the WORKS_FOR relationship set, which represents a relationship type WORKS_FOR between EMPLOYEE and DEPARTMENT.

Relationship instances of the M:N WORKS_ON relationship between EMPLOYEE and PROJECT

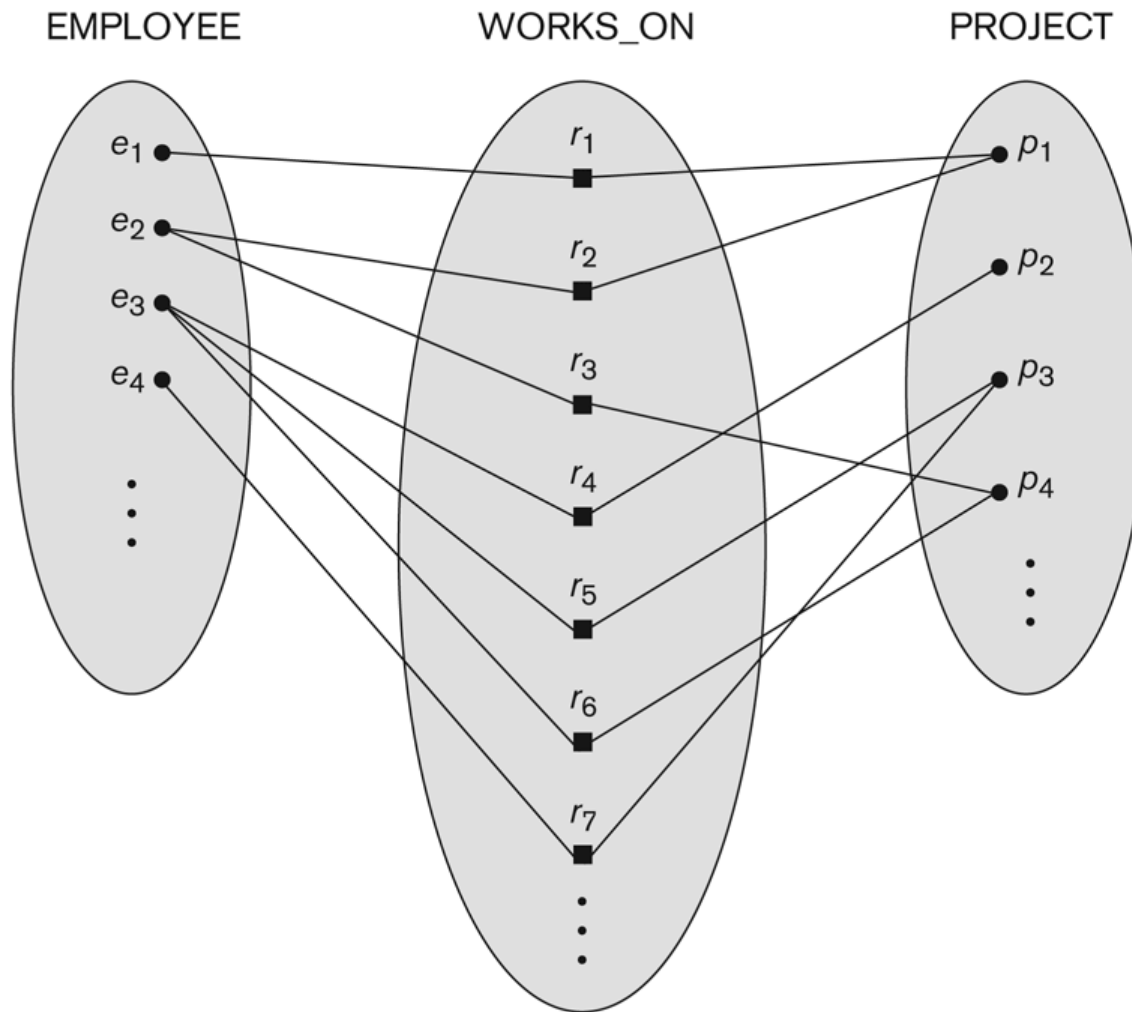


Figure 3.13
An M:N relationship,
WORKS_ON.

Relationship type vs. relationship set (1)

- Relationship Type:
 - Is the schema description of a relationship
 - Identifies the relationship name and the participating entity types
 - Also identifies certain relationship constraints
- Relationship Set:
 - The current set of relationship instances represented in the database
 - The current *state* of a relationship type

Relationship type vs. relationship set (2)

- Previous figures displayed the relationship sets
- Each instance in the set relates individual participating entities – one from each participating entity type
- In ER diagrams, we represent the *relationship type* as follows:
 - Diamond-shaped box is used to display a relationship type
 - Connected to the participating entity types via straight lines

Refining the COMPANY database schema by introducing relationships

- By examining the requirements, six relationship types are identified
- All are *binary* relationships(degree 2)
- Listed below with their participating entity types:
 - WORKS_FOR (between EMPLOYEE, DEPARTMENT)
 - MANAGES (also between EMPLOYEE, DEPARTMENT)
 - CONTROLS (between DEPARTMENT, PROJECT)
 - WORKS_ON (between EMPLOYEE, PROJECT)
 - SUPERVISION (between EMPLOYEE (as subordinate), EMPLOYEE (as supervisor))
 - DEPENDENTS_OF (between EMPLOYEE, DEPENDENT)

ER DIAGRAM – Relationship Types are: WORKS_FOR, MANAGES, WORKS_ON, CONTROLS, SUPERVISION, DEPENDENTS_OF

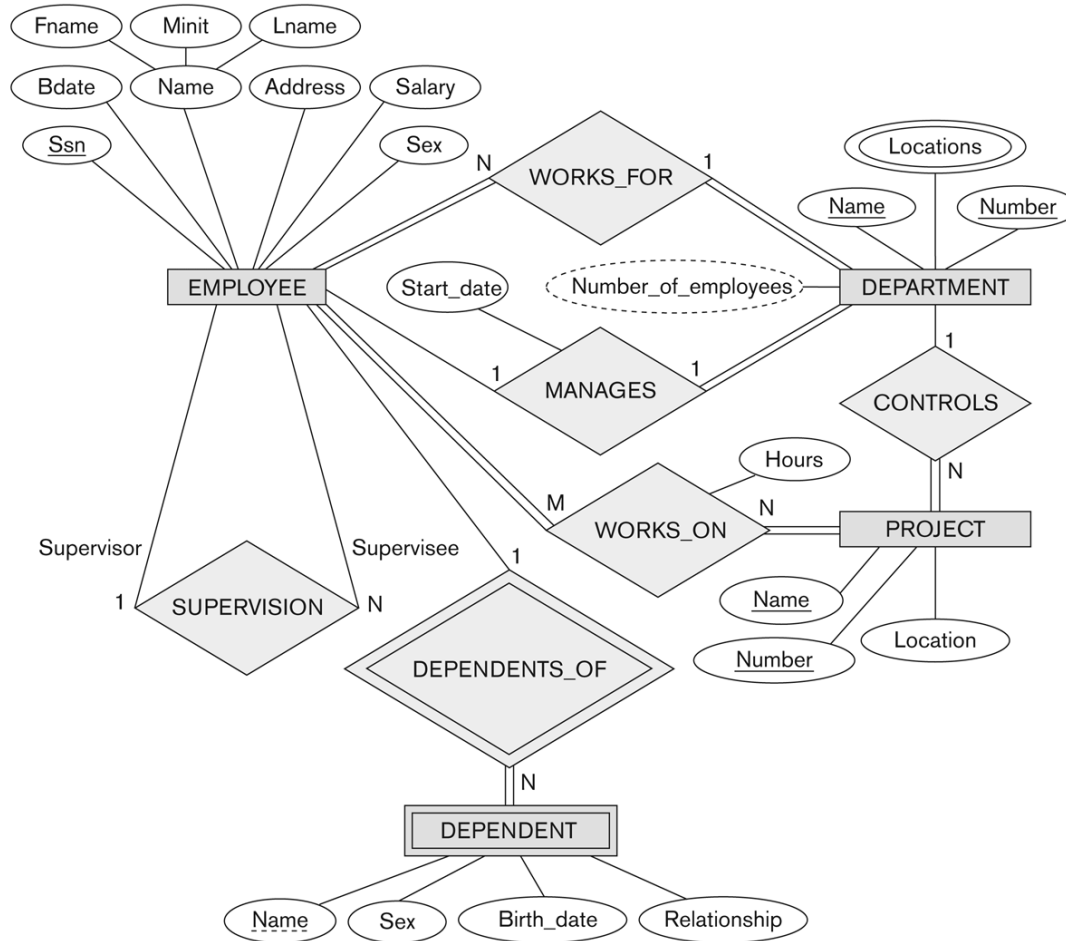


Figure 3.2
An ER schema diagram for the COMPANY database. The diagrammatic notation is introduced gradually throughout this chapter.

Discussion on Relationship Types

- In the refined design, some attributes from the initial entity types are refined into relationships:
 - Manager of DEPARTMENT -> MANAGES
 - Works_on of EMPLOYEE -> WORKS_ON
 - Department of EMPLOYEE -> WORKS_FOR
 - etc
- In general, more than one relationship type can exist between the same participating entity types
 - MANAGES and WORKS_FOR are distinct relationship types between EMPLOYEE and DEPARTMENT
 - Different meanings and different relationship instances.

Recursive Relationship Type

- An relationship type whose with the same participating entity type in **distinct roles**
- Example: the SUPERVISION relationship
- EMPLOYEE participates twice in two distinct roles:
 - supervisor (or boss) role
 - supervisee (or subordinate) role
- Each relationship instance relates two distinct EMPLOYEE entities:
 - One employee in *supervisor* role
 - One employee in *supervisee* role

Weak Entity Types

- An entity that does not have a key attribute
- A weak entity must participate in an identifying relationship type with an owner or identifying entity type
- Entities are identified by the combination of:
 - A partial key of the weak entity type
 - The particular entity they are related to in the identifying entity type
- **Example:**
 - A DEPENDENT entity is identified by the dependent's first name, *and* the specific EMPLOYEE with whom the dependent is related
 - Name of DEPENDENT is the *partial key*
 - DEPENDENT is a *weak entity type*
 - EMPLOYEE is its identifying entity type via the identifying relationship type DEPENDENT_OF

Constraints on Relationships

- Constraints on Relationship Types
 - (Also known as ratio constraints)
 - Cardinality Ratio (specifies *maximum* participation)
 - One-to-one (1:1)
 - One-to-many (1:N) or Many-to-one (N:1)
 - Many-to-many (M:N)
 - Existence Dependency Constraint (specifies *minimum* participation) (also called participation constraint)
 - zero (optional participation, not existence-dependent)
 - one or more (mandatory participation, existence-dependent)

One to one relationship:

القسم يديره موظف واحد

الموظف لا يدير الا قسم واحد فقط

One to many(1:N or 1:m)

القسم يدير عدة مشروعات

المشروع يديره قسم واحد

مثال :- الموظف و افراد اسرته (الموظف الواحد له عدة اتباع)

مثال : القسم يعمل فيه مجموعة من الموظفين

Many-to-one (N:1) Relationship

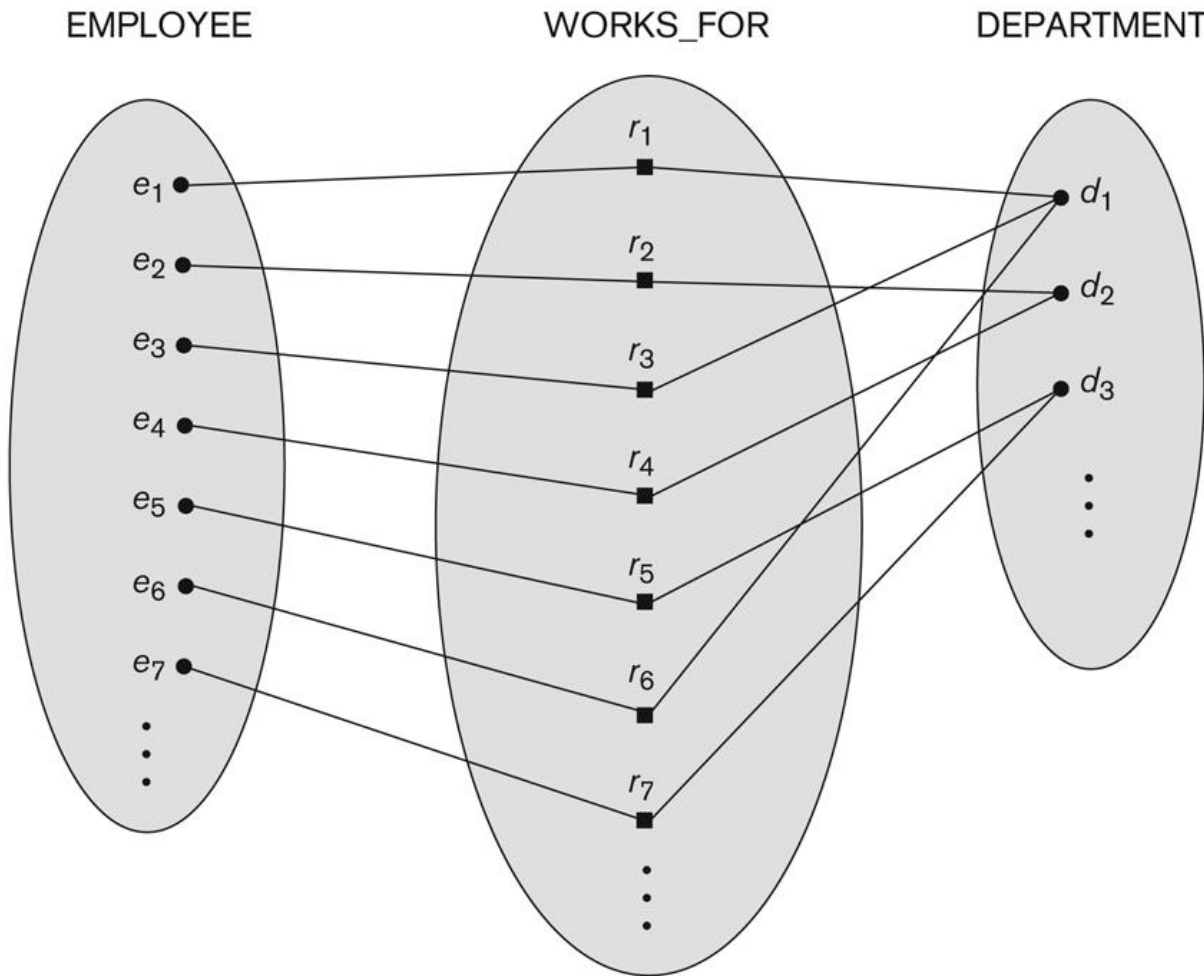


Figure 3.9

Some instances in the WORKS_FOR relationship set, which represents a relationship type WORKS_FOR between EMPLOYEE and DEPARTMENT.

Many-to-many (M:N) Relationship

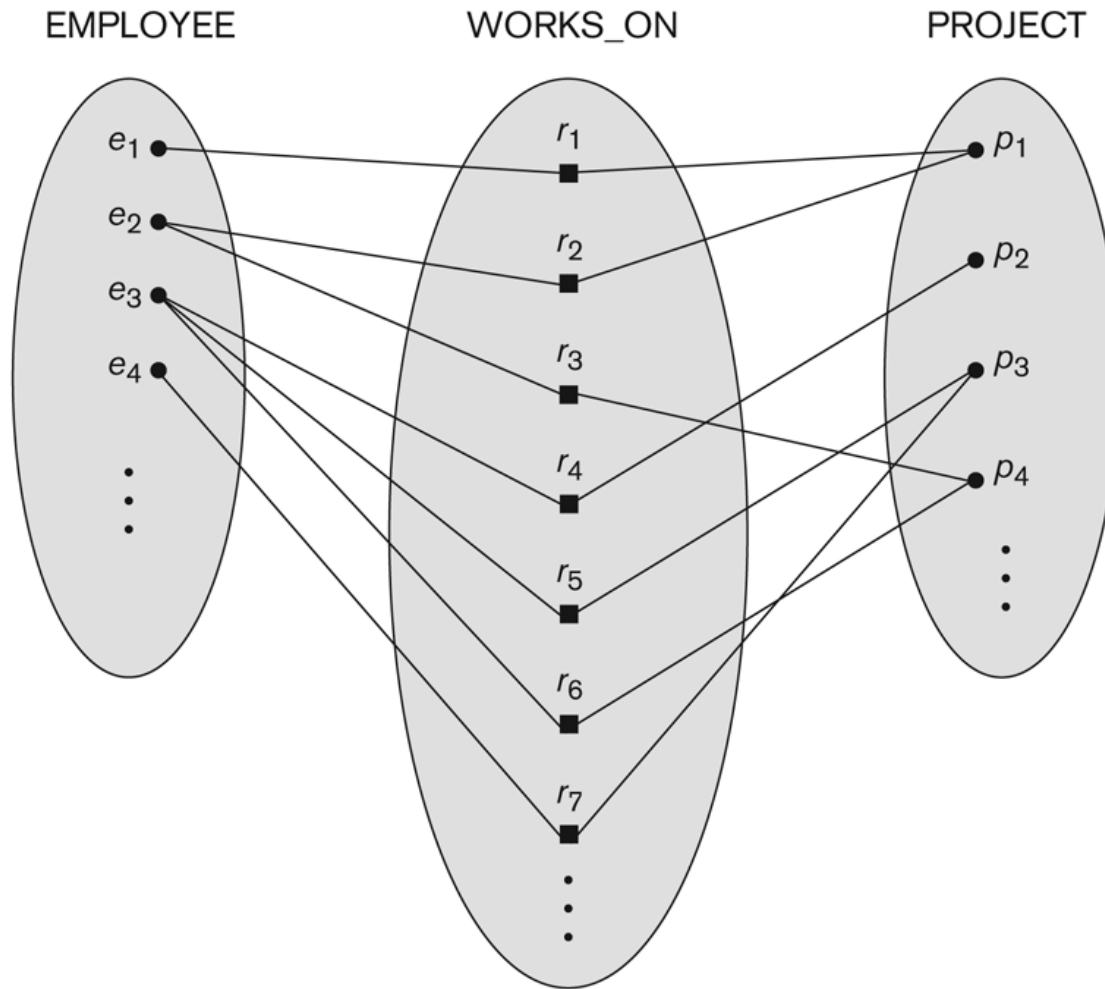


Figure 3.13
An M:N relationship,
WORKS_ON.

Many to Many

- الموف ممكن ان يساهم في عدة مشاريع
- والمشروع يتكون من عدة موظفين

- Existence Dependency Constraint (specifies *minimum* participation) (also called participation constraint)
 - zero (optional participation, not existence-dependent)
 - one or more (mandatory participation, existence-dependent)

- مثال

- عندنا entity يسمى Employee و اخر depart
- هل كل موظفين يديروا اقسام فتسمى العلاقة partial
- هل لكل قسم موظف يديروا فتسمى total

مثال

علاقة بين الموظف واسرته (موظف واحد له اسرته)
partial هل لازم لكل موظف اسرته (لا) لذلك تسمى

Displaying a recursive relationship

- In a recursive relationship type.
 - Both participations are same entity type in different roles.
 - For example, SUPERVISION relationships between EMPLOYEE (in role of supervisor or boss) and (another) EMPLOYEE (in role of subordinate or worker).
- In following figure, first role participation labeled with 1 and second role participation labeled with 2.
- In ER diagram, need to display role names to distinguish participations.

A Recursive Relationship Supervision`

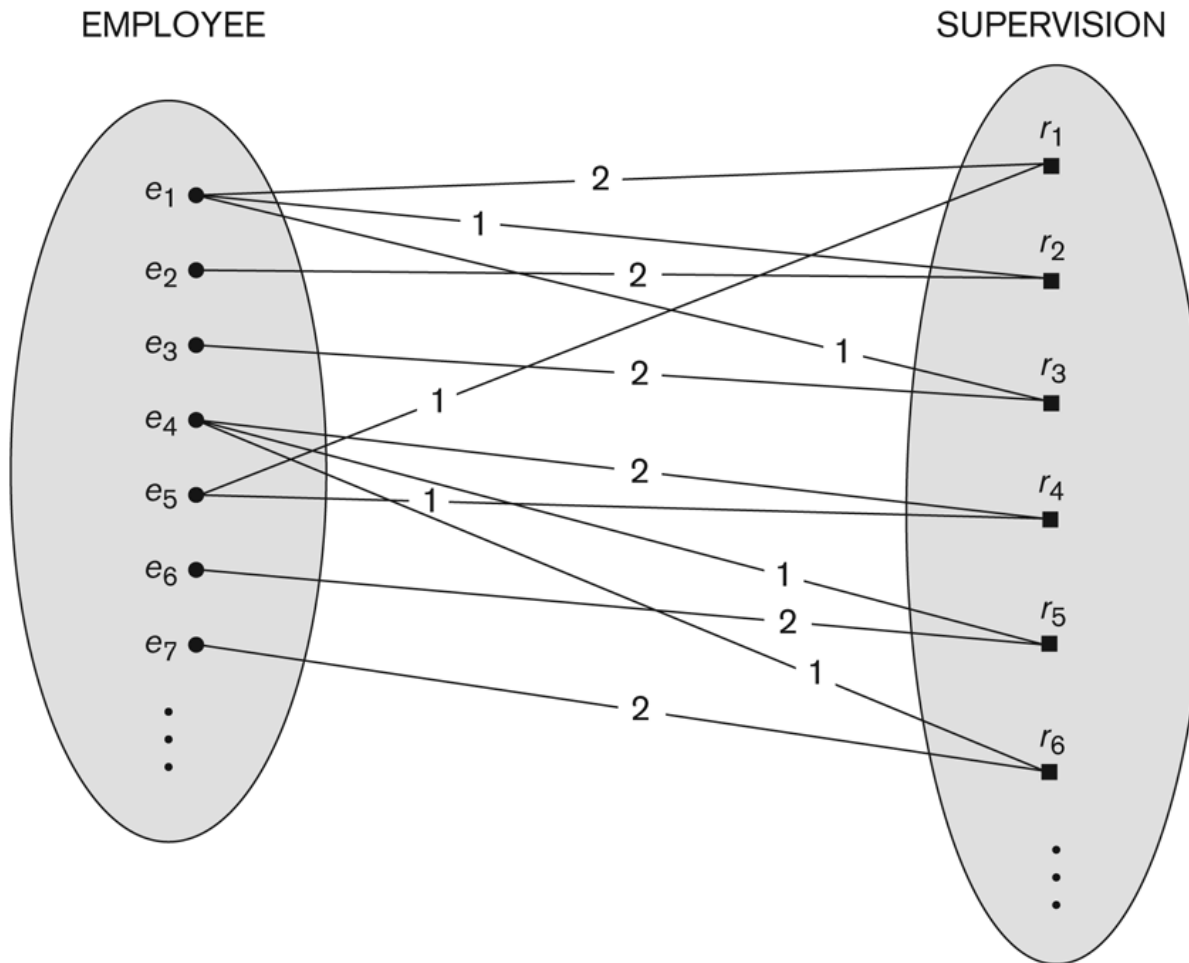


Figure 3.11
A recursive relationship SUPERVISION between EMPLOYEE in the *supervisor* role (1) and EMPLOYEE in the *subordinate* role (2).

Recursive Relationship Type is: SUPERVISION (participation role names are shown)

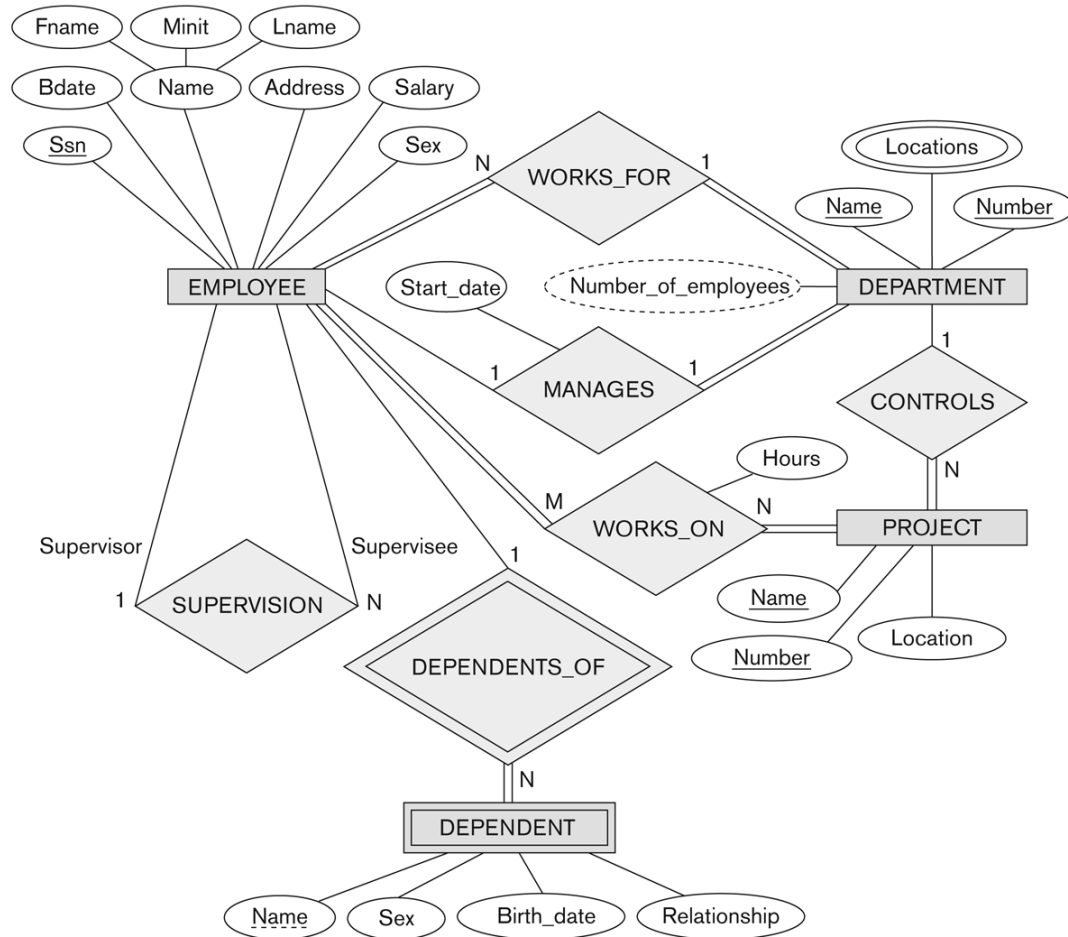


Figure 3.2

An ER schema diagram for the COMPANY database. The diagrammatic notation is introduced gradually throughout this chapter.

Attributes of Relationship types

- A relationship type can have attributes:
 - For example, HoursPerWeek of WORKS_ON
 - Its value for each relationship instance describes the number of hours per week that an EMPLOYEE works on a PROJECT.
 - A value of HoursPerWeek depends on a particular (employee, project) combination
- Most relationship attributes are used with M:N relationships
 - In 1:N relationships, they can be transferred to the entity type on the N-side of the relationship

Example Attribute of a Relationship Type: Hours of WORKS_ON

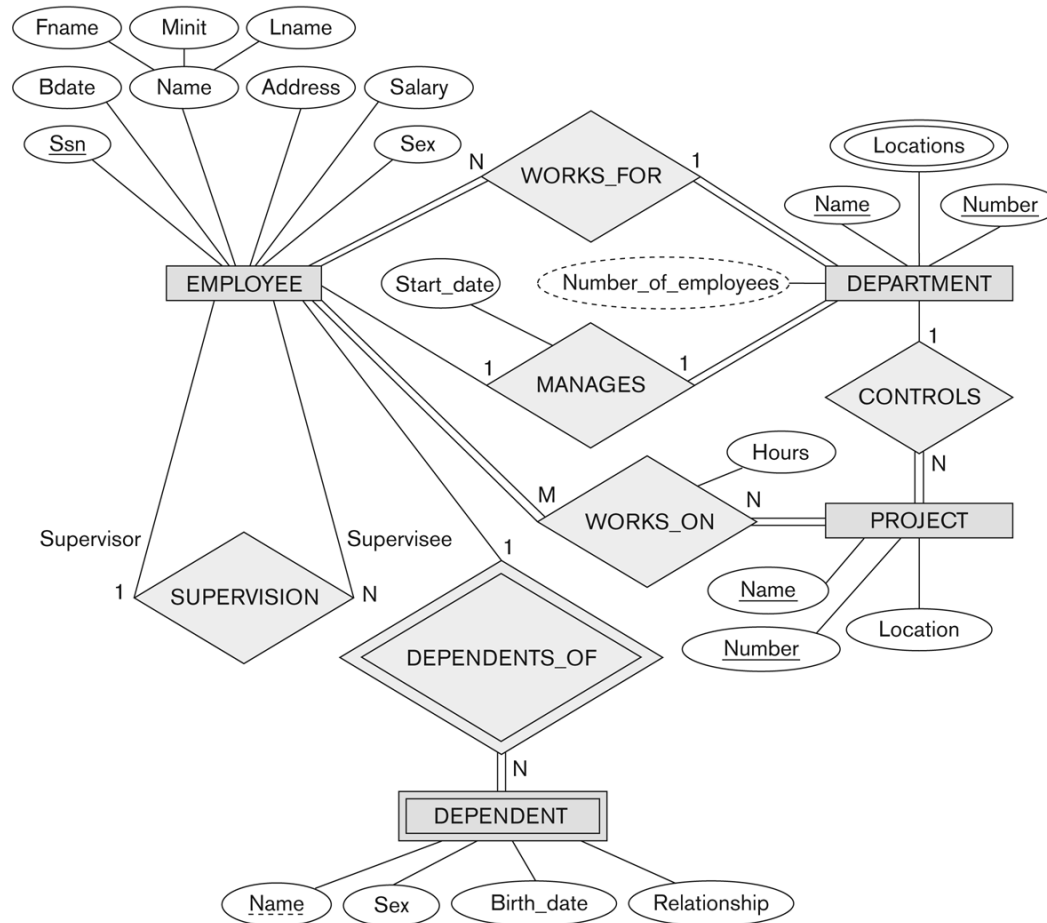


Figure 3.2

An ER schema diagram for the COMPANY database. The diagrammatic notation is introduced gradually throughout this chapter.

Notation for Constraints on Relationships

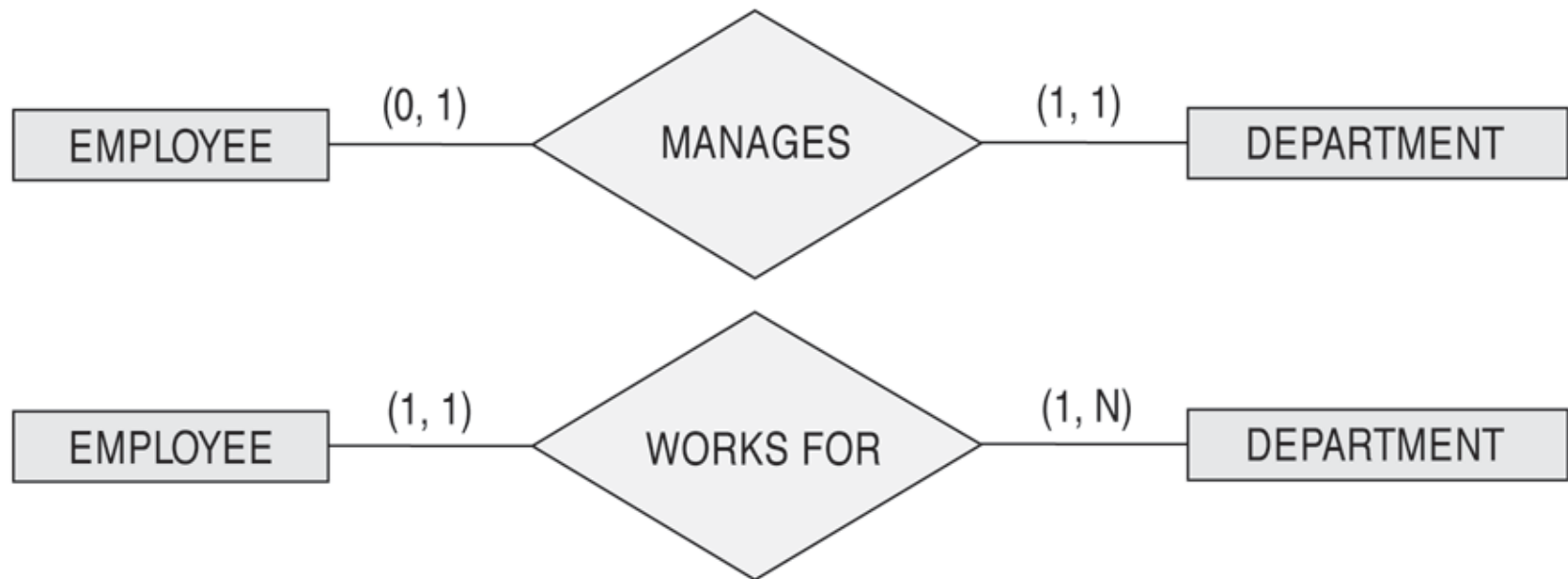
- Cardinality ratio (of a binary relationship): 1:1, 1:N, N:1, or M:N
 - Shown by placing appropriate numbers on the relationship edges.
- Participation constraint (on each participating entity type): total (called existence dependency) or partial.
 - Total shown by double line, partial by single line.
- NOTE: These are easy to specify for Binary Relationship Types.

Alternative (min, max) notation for relationship structural constraints:

- Specified on each participation of an entity type E in a relationship type R
- Specifies that each entity e in E participates in at least *min* and at most *max* relationship instances in R
- Default(no constraint): min=0, max=n (signifying no limit)
- Must have $\text{min} \leq \text{max}$, $\text{min} \geq 0$, $\text{max} \geq 1$
- Derived from the knowledge of mini-world constraints
- Examples:
 - A department has exactly one manager and an employee can manage at most one department.
 - Specify (0,1) for participation of EMPLOYEE in MANAGES
 - Specify (1,1) for participation of DEPARTMENT in MANAGES
 - An employee can work for exactly one department but a department can have any number of employees.
 - Specify (1,1) for participation of EMPLOYEE in WORKS_FOR
 - Specify (0,n) for participation of DEPARTMENT in WORKS_FOR

- لكل موظف الحق في تسجيل أربعة من التابعين في خدمة التأمين الصحي
- يجب ان يشترك الموظف على الأقل في مشروع واحد وعلى الأكثر في ٤ مشاريع

The (min,max) notation for relationship constraints



Read the min,max numbers next to the entity type and looking **away from** the entity type

COMPANY ER Schema Diagram using (min, max) notation

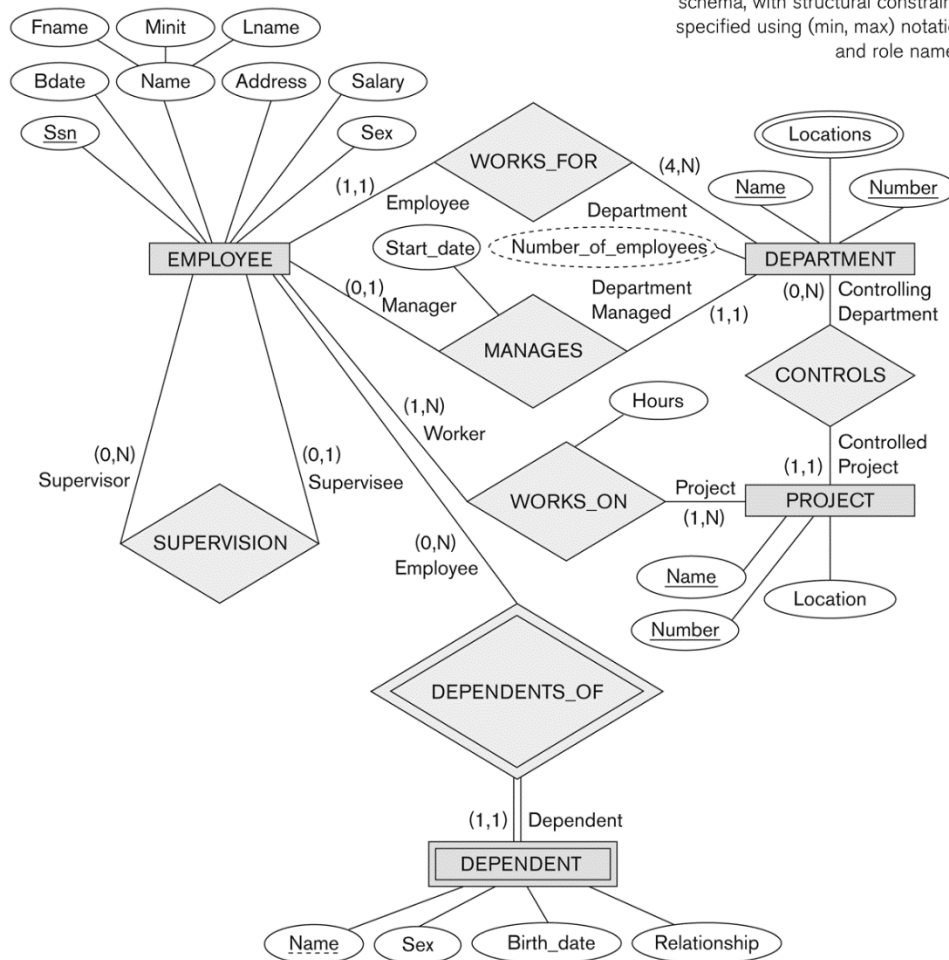


Figure 3.15
ER diagrams for the company schema, with structural constraints specified using (min, max) notation and role names.

Alternative diagrammatic notation

- ER diagrams is one popular example for displaying database schemas
- Many other notations exist in the literature and in various database design and modeling tools
- Appendix A illustrates some of the alternative notations that have been used
- UML class diagrams is representative of another way of displaying ER concepts that is used in several commercial design tools

Summary of notation for ER diagrams

Figure 3.14
Summary of the notation for ER diagrams.

Symbol	Meaning
	Entity
	Weak Entity
	Relationship
	Identifying Relationship
	Attribute
	Key Attribute
	Multivalued Attribute
	Composite Attribute
	Derived Attribute
	Total Participation of E_2 in R
	Cardinality Ratio 1: N for $E_1:E_2$ in R
	Structural Constraint (min, max) on Participation of E in R

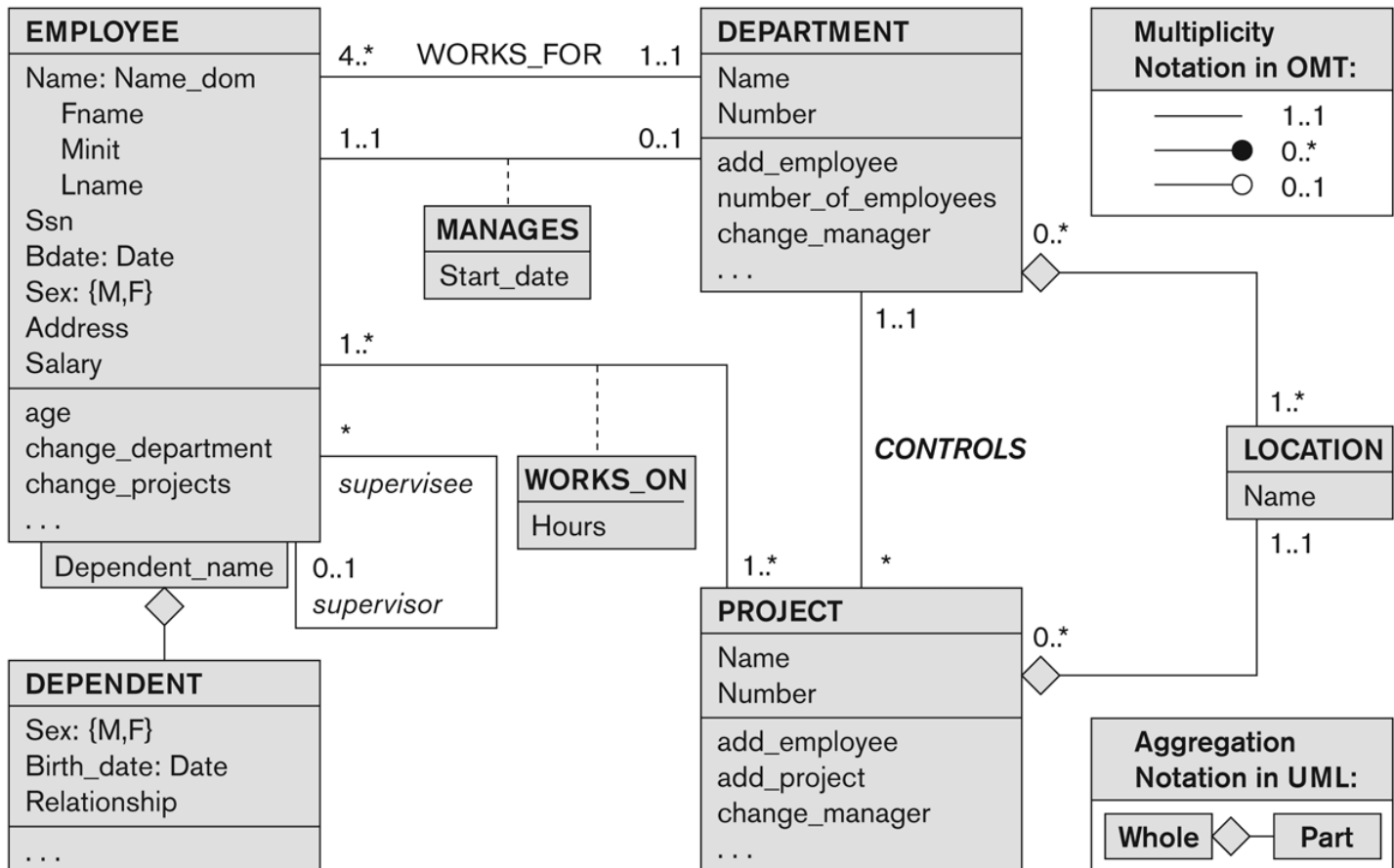
UML class diagrams

- Represent classes (similar to entity types) as large rounded boxes with three sections:
 - Top section includes entity type (class) name
 - Second section includes attributes
 - Third section includes class operations (operations are not in basic ER model)
- Relationships (called associations) represented as lines connecting the classes
 - Other UML terminology also differs from ER terminology
- Used in database design and object-oriented software design
- UML has many other types of diagrams for software design (see Chapter 12)

UML class diagram for COMPANY database schema

Figure 3.16

The COMPANY conceptual schema in UML class diagram notation.



Other alternative diagrammatic notations

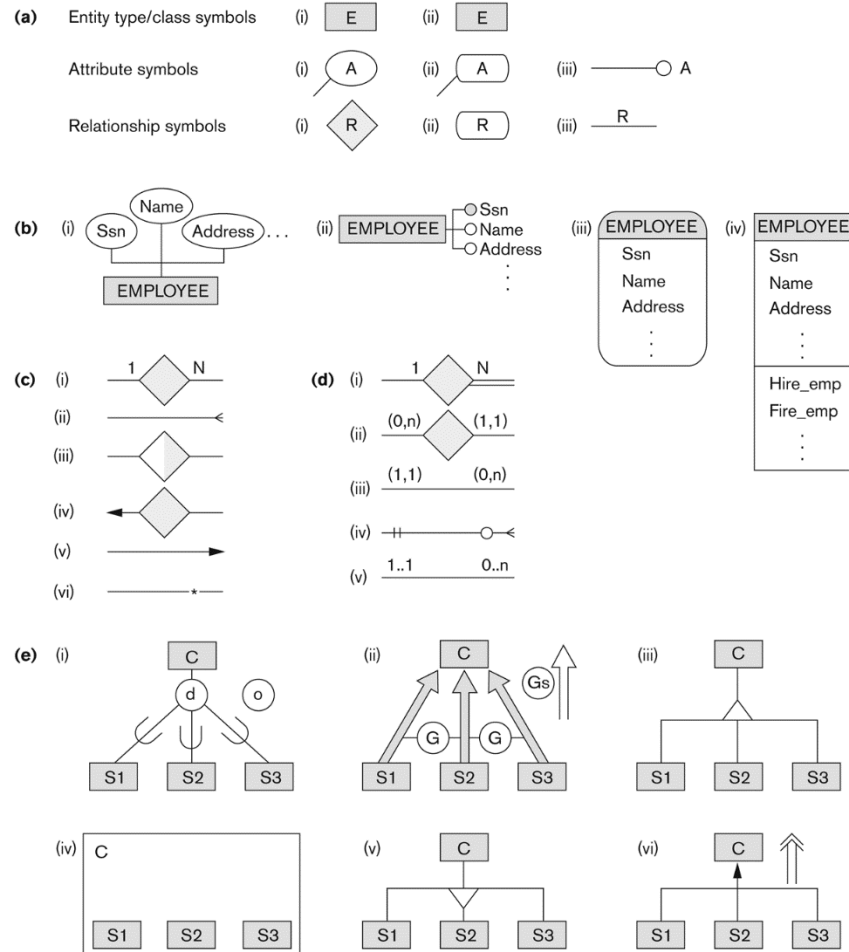


Figure A.1
Alternative notations. (a) Symbols for entity type/class, attribute, and relationship. (b) Displaying attributes. (c) Displaying cardinality ratios. (d) Various (min, max) notations. (e) Notations for displaying specialization/generalization.

Relationships of Higher Degree

- Relationship types of degree 2 are called binary
- Relationship types of degree 3 are called ternary and of degree n are called n -ary
- In general, an n -ary relationship is not equivalent to n binary relationships
- Constraints are harder to specify for higher-degree relationships ($n > 2$) than for binary relationships

Discussion of n-ary relationships ($n > 2$)

- In general, 3 binary relationships can represent different information than a single ternary relationship (see Figure 3.17a and b on next slide)
- If needed, the binary and n-ary relationships can all be included in the schema design (see Figure 3.17a and b, where all relationships convey different meanings)
- In some cases, a ternary relationship can be represented as a weak entity if the data model allows a weak entity type to have multiple identifying relationships (and hence multiple owner entity types) (see Figure 3.17c)

Example of a ternary relationship

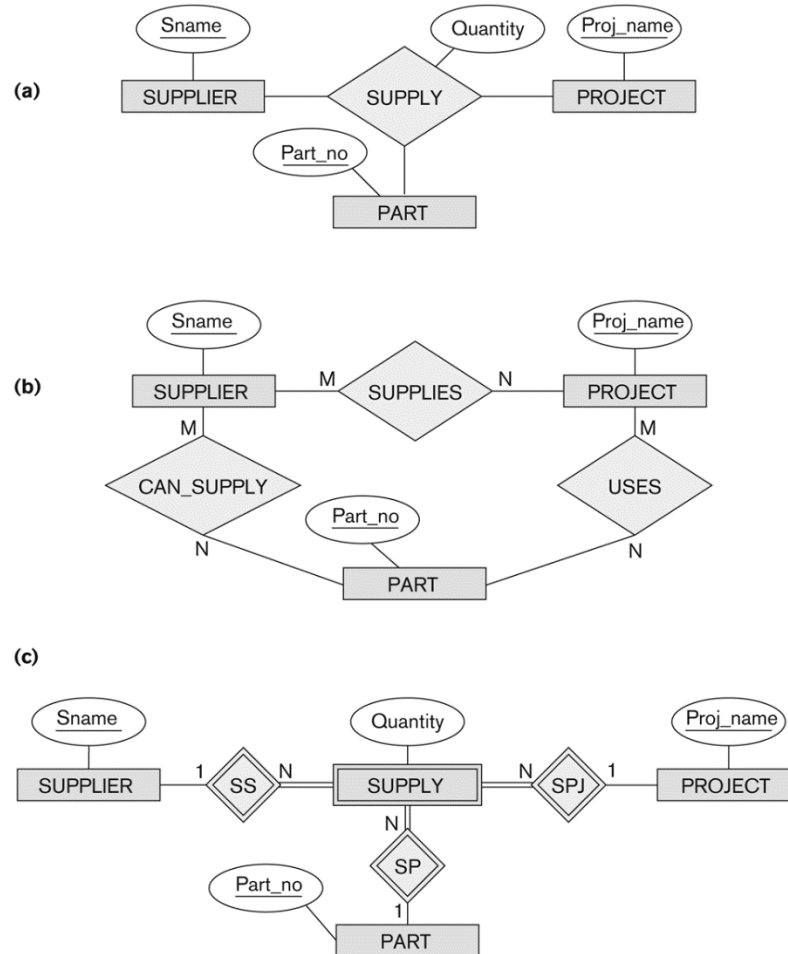


Figure 3.17
Ternary relationship types. (a) The SUPPLY relationship. (b) Three binary relationships not equivalent to SUPPLY. (c) SUPPLY represented as a weak entity type.

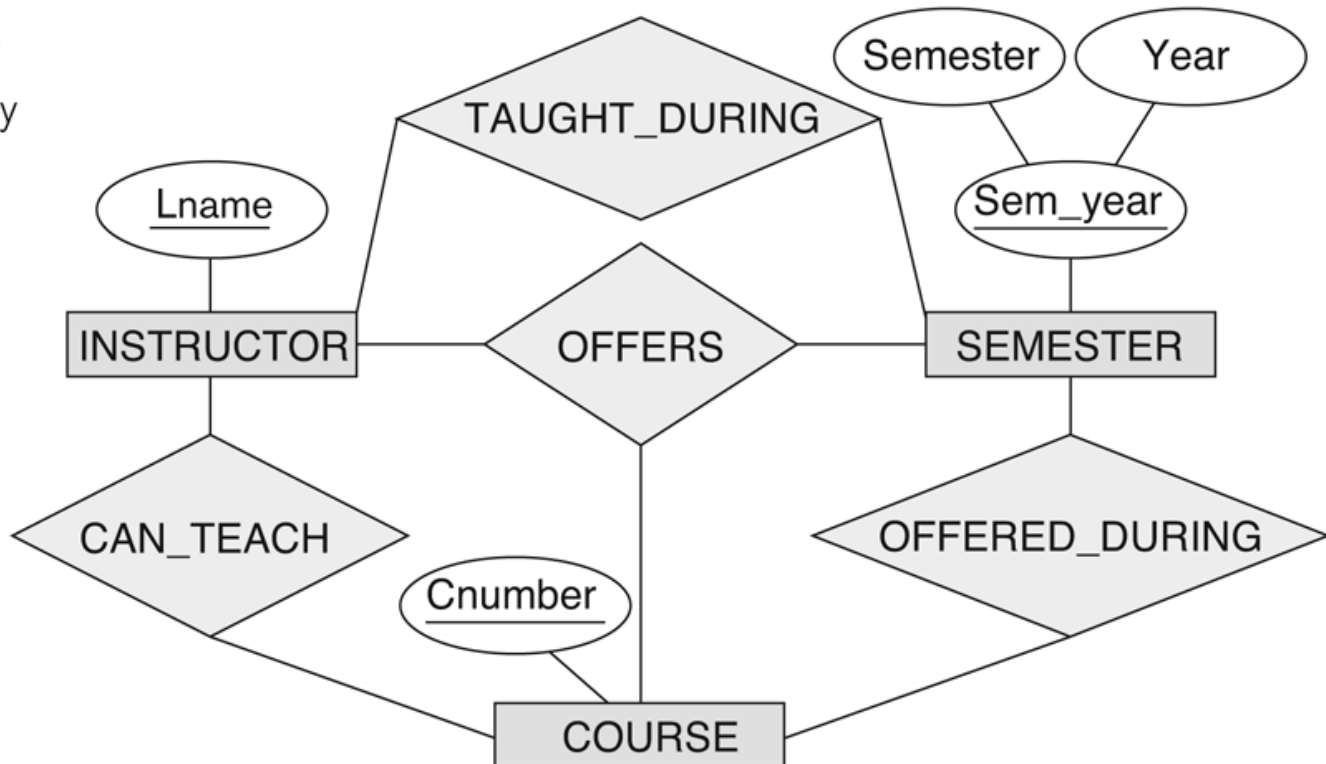
Discussion of n-ary relationships ($n > 2$)

- If a particular binary relationship can be derived from a higher-degree relationship at all times, then it is redundant
- For example, the TAUGHT_DURING binary relationship in Figure 3.18 (see next slide) can be derived from the ternary relationship OFFERS (based on the meaning of the relationships)

Another example of a ternary relationship

Figure 3.18

Another example of ternary versus binary relationship types.



Displaying constraints on higher-degree relationships

- The (min, max) constraints can be displayed on the edges – however, they do not fully describe the constraints
- Displaying a 1, M, or N indicates additional constraints
 - An M or N indicates no constraint
 - A 1 indicates that an entity can participate in at most one relationship instance *that has a particular combination of the other participating entities*
- In general, both (min, max) and 1, M, or N are needed to describe fully the constraints

Data Modeling Tools

- A number of popular tools that cover conceptual modeling and mapping into relational schema design.
 - Examples: ERWin, S- Designer (Enterprise Application Suite), ER- Studio, etc.
- **POSITIVES:**
 - Serves as documentation of application requirements, easy user interface - mostly graphics editor support
- **NEGATIVES:**
 - Most tools lack a proper distinct notation for relationships with relationship attributes
 - Mostly represent a relational design in a diagrammatic form rather than a conceptual ER-based design

(See Chapter 12 for details)

Some of the Currently Available Automated Database Design Tools

COMPANY	TOOL	FUNCTIONALITY
Embarcadero Technologies	ER Studio	Database Modeling in ER and IDEF1X
	DB Artisan	Database administration, space and security management
Oracle	Developer 2000/Designer 2000	Database modeling, application development
Popkin Software	System Architect 2001	Data modeling, object modeling, process modeling, structured analysis/design
Platinum (Computer Associates)	Enterprise Modeling Suite: Erwin, BPWin, Paradigm Plus	Data, process, and business component modeling
Persistence Inc.	Pwertier	Mapping from O-O to relational model
Rational (IBM)	Rational Rose	UML Modeling & application generation in C++/JAVA
Resolution Ltd.	Xcase	Conceptual modeling up to code maintenance
Sybase	Enterprise Application Suite	Data modeling, business logic modeling
Visio	Visio Enterprise	Data modeling, design/reengineering Visual Basic/C++

Extended Entity-Relationship (EER) Model (in next chapter)

- The entity relationship model in its original form did not support the specialization and generalization abstractions
- Next chapter illustrates how the ER model can be extended with
 - Type-subtype and set-subset relationships
 - Specialization/Generalization Hierarchies
 - Notation to display them in EER diagrams

Chapter Summary

- ER Model Concepts: Entities, attributes, relationships
- Constraints in the ER model
- Using ER in step-by-step conceptual schema design for the COMPANY database
- ER Diagrams - Notation
- Alternative Notations – UML class diagrams, others