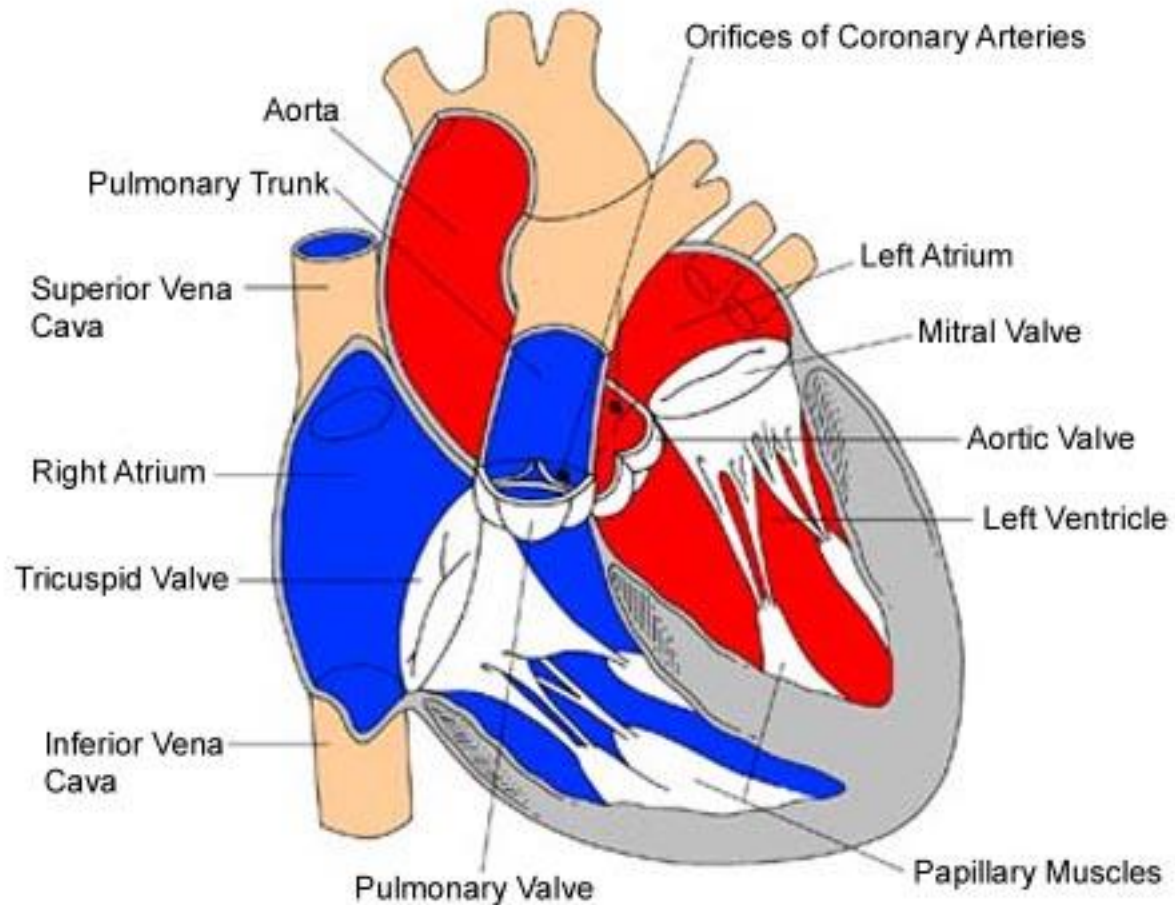
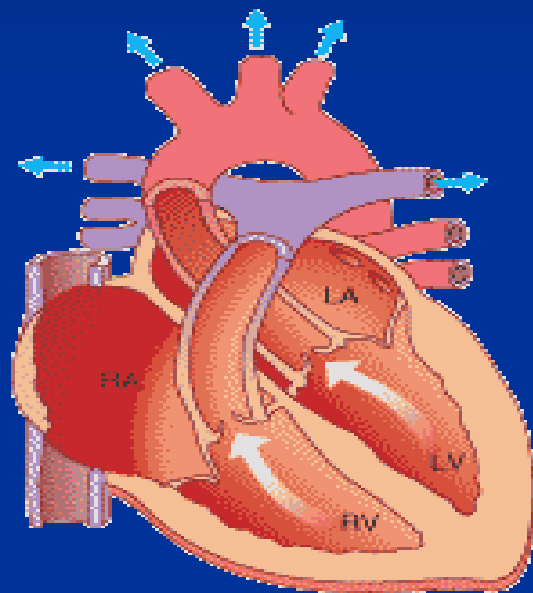


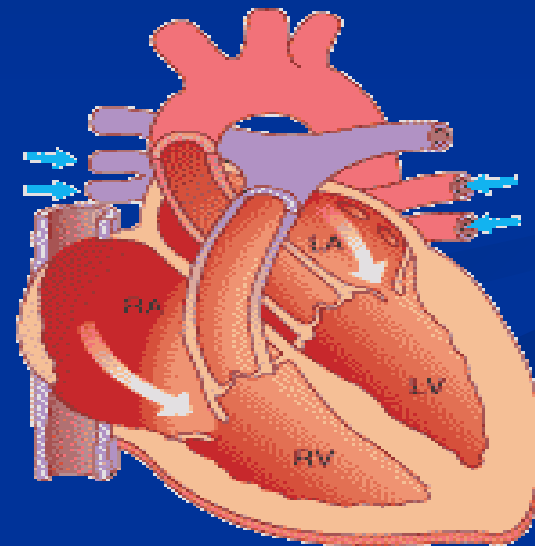
Symptoms and Signs of CVS

Interior View of the Heart





A
Normal Systole



B
Normal Diastole

Symptoms of CVS

Three main symptoms:

1-Pulmonary Congestive Symptoms:

A-Dyspnea:

Grade 1 on mild Exertion.

Grade 2 on moderate Exertion.

Grade 3 on severe Exertion.

Grade 4 at Rest.

Symptoms of CVS

B- Orthopnea.

C- Paroxysmal Nocturnal Dyspnea (PND).

D- Cough with or without sputum.

E- Cardiac Asthma (Wheezes).

F- Pulmonary Edema: Scanty, whitish frothy sputum.

Symptoms of CVS

2-Systemic Congestive Symptoms:

A-Congested Neck Veins (JVP).

C- Congested Liver: RT Hypochondrium pain.

D- Abdominal Swelling.

E- Bilateral Lower Limb Swelling.

Symptoms of CVS

3-Low Output Symptoms:

A- To Brain: Guideness, Dizziness, Fainting Attacks and Syncopal Attacks.

B-To Heart: Chest pain, Easy Fatigability and Intermittent Claudication.

* Palpitation: Awareness of Heart beat.

Signs of CVS

1-Vascular Signs:

A- Arterial.

B- Venous.

2- Cardiac Signs.

Vascular Signs

1- Arterial:

-Pulse.

- Blood Pressure.

2- Venous:

- Pulse wave.

- Venous pressure.

Vascular Signs

-Arterial Pulse:

- 1- Rate.
- 2- Rhythm.
- 3- Volume.
- 4- Equality in both hands.
- 5- Radio- Femoral delay.

6- Pulse of special character:

A- Pulsus Parvus: (Small pulse volume), pulse pressure < 30 mm Hg.

B- Pulsus Tardus (plateau).

C- Bounding Pulse.

D- Collapsing Pulse (Water Hammer Pulse), pulse pressure > 60 mm Hg + DBP < 60 mm Hg.

E- Pulsus Alternans.

F- Pulsus Paradoxus.

G- Pulsus Bisferrence.

H- Pulsus Trigemenus.

-Venous Pulse:

A + V wave, X+Y Descent.

-Venous Pressure (JVP).

Cardiac Signs

1- Inspection:

-Pulse (precordial area):

*Localized “LV”

*Diffused “RV”

-Bulging (precordial area)

Cardiac Signs

2- Palpation:

A- Site of the Apex.

B- Character of Apex beat;

- * Normal.

- * Tapping.

- * Heaving: sustained or unsustained.

Cardiac Signs

C- Palpable Murmur (Thrill)

D- Palpable 2nd Heart Sound.

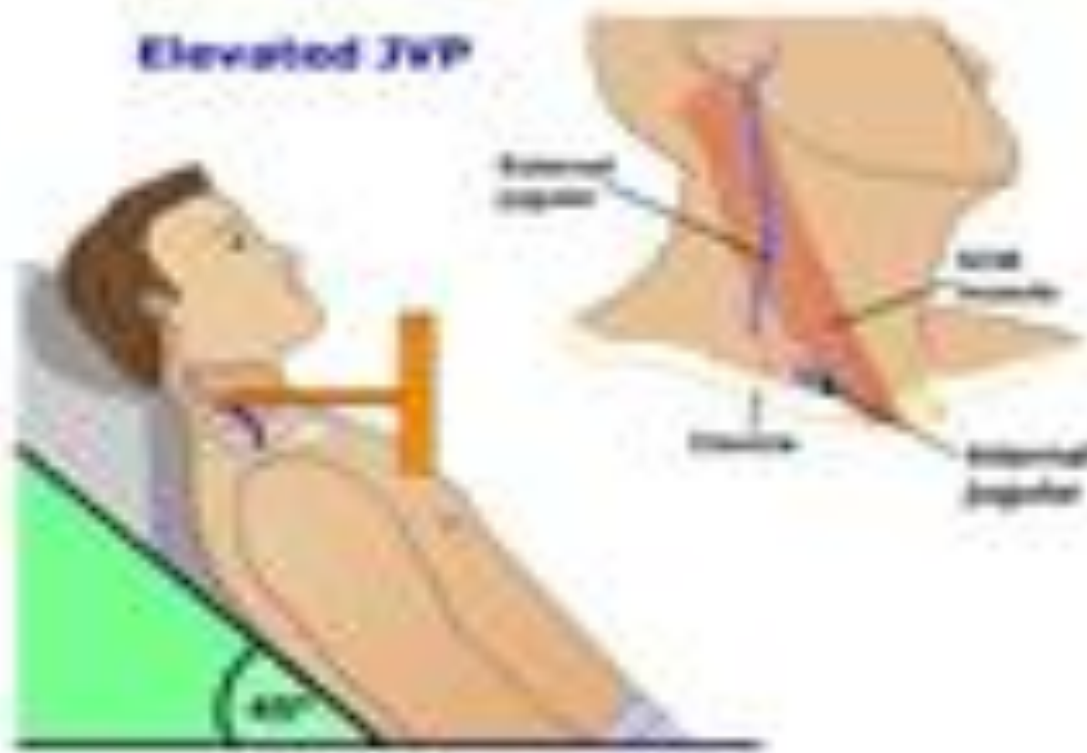
E- Parasternal Heave.

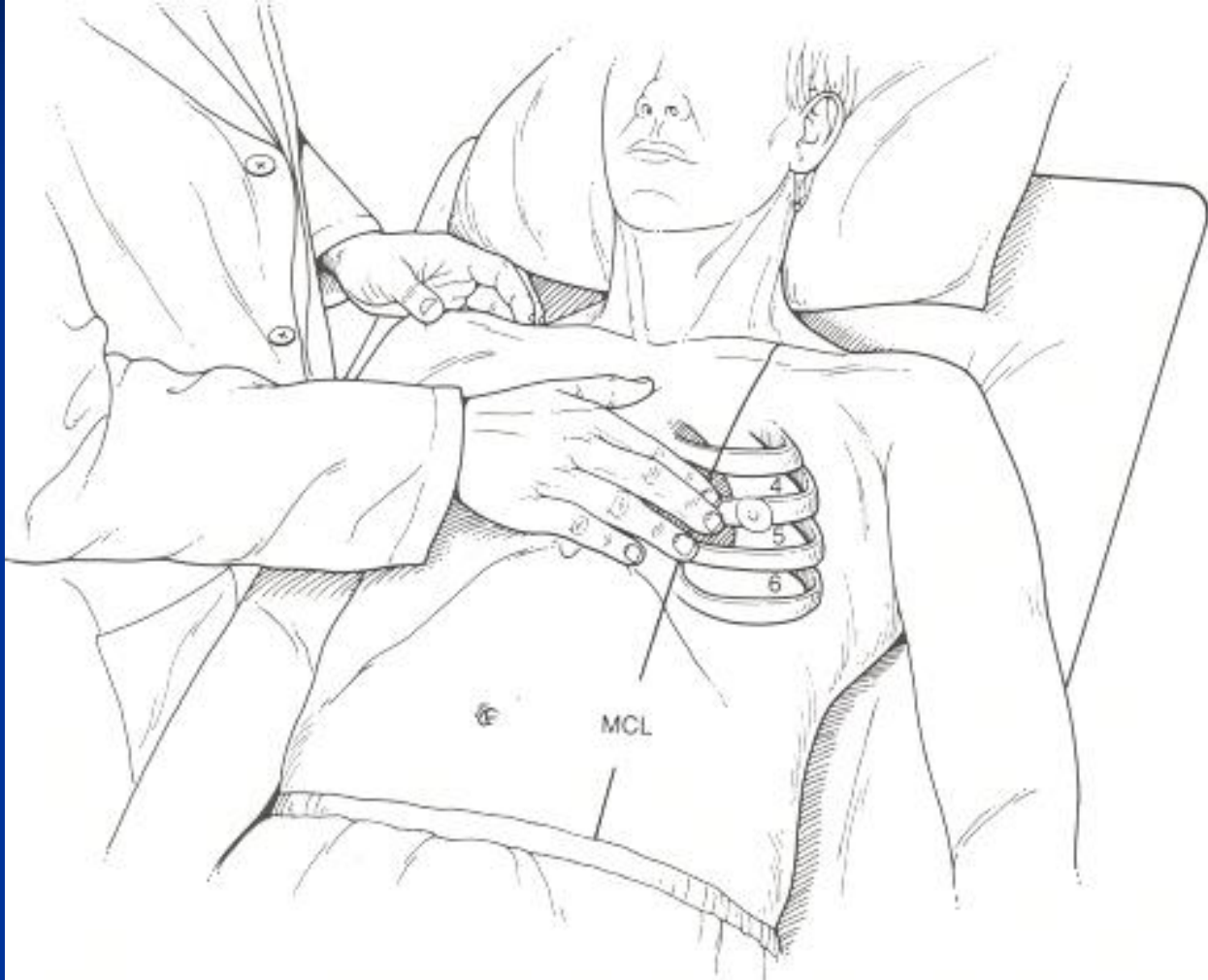
Cardiac Signs

3- Auscultation:

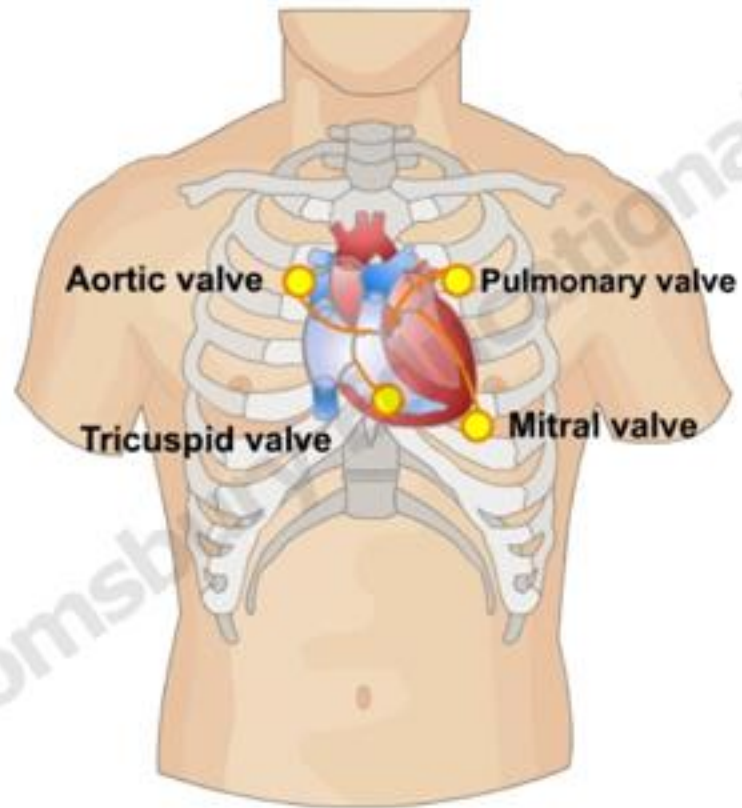
- * Heart Sounds 1st+ 2nd .
- * Added Sounds 3rd + 4th, click and opening snap.
- * Murmurs.

Elevated JWP





Radiation of valve sounds





Anterior View of the Heart

